

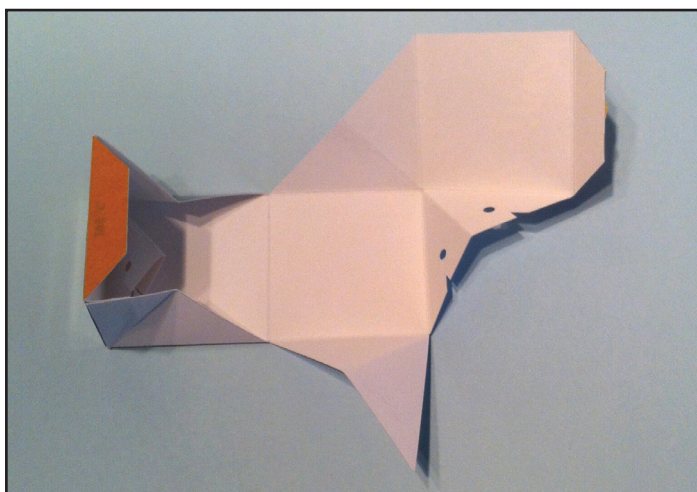
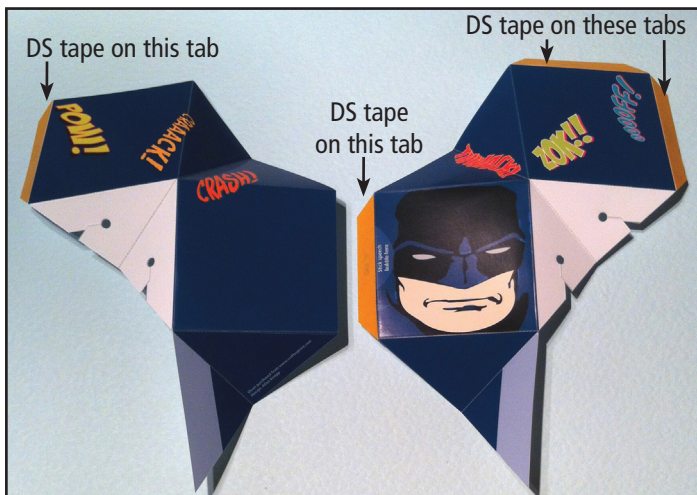
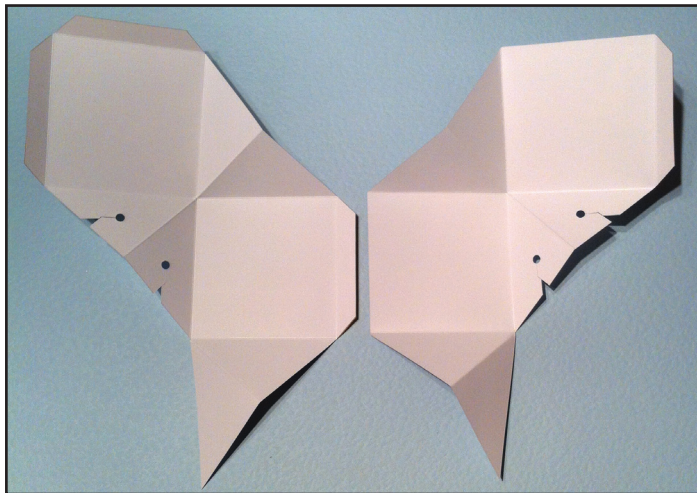
Tutorial

BIG BLOCKHEAD Pop-up card kits

Design: Allan Knopp

These cards come inside a sleeve and when the recipient pulls the card out, or opens the sleeve it pops up into a cube.

They are larger than the previous set of Pop-Up cubes, the sides of the cube are 86mm square. The construction of the cube is the same for all cards, although some may have additional elements. Any instructions for these extra elements will be included on the sheet for each card.



The kit consists of two sheets for the cube and one for the sleeve, some kits may have an alternative sleeve, just choose and print the sleeve you want.

Print on a fairly thick paper or card, approx 250gsm should be ideal.

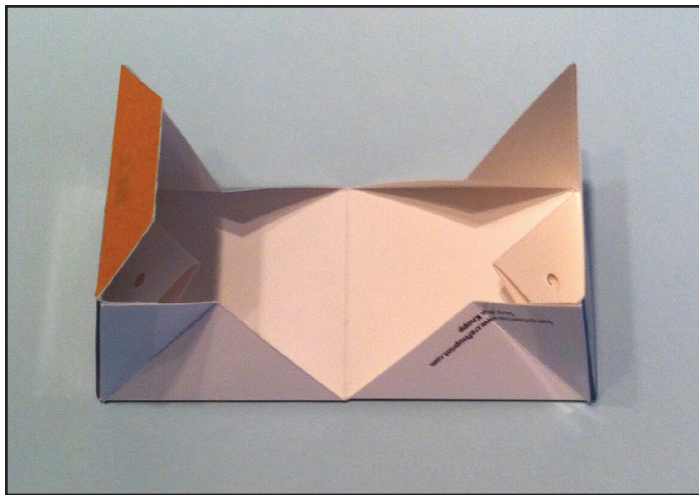
First crease and cut out the two sections for the cube. I recommend pricking through where the folds will be and scoring on the reverse to get a crisp fold. Most of the folds will be away from the printed side with the exception of the triangular sections which will form the top and bottom of the cube, these are folded with the printed surface inside the fold.

Turn the printed sheet over and apply double sided tape onto the four tabs as shown on the picture.

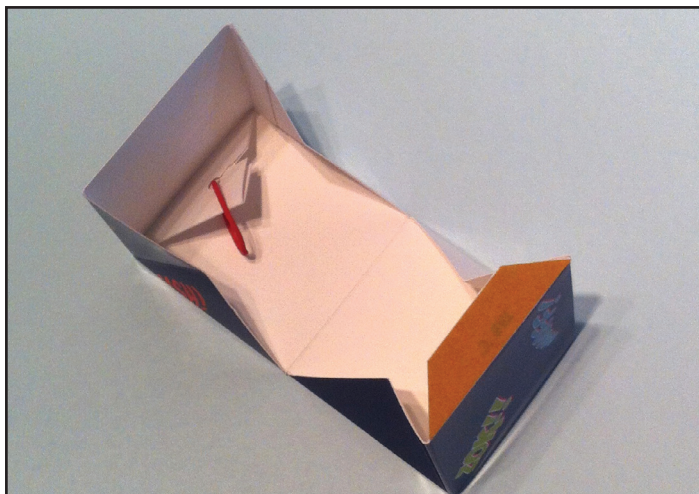
Join the two sections together by sticking TAB 'D' so that the fold of TAB 'D' aligns along Edge 'D'

Fold the triangular sections downwards so that Corner 'Z' meets Corner 'X'. Fold so that Edge 'A' aligns with the fold of TAB 'A' and stick it to the back of Panel 'A'.

Continued

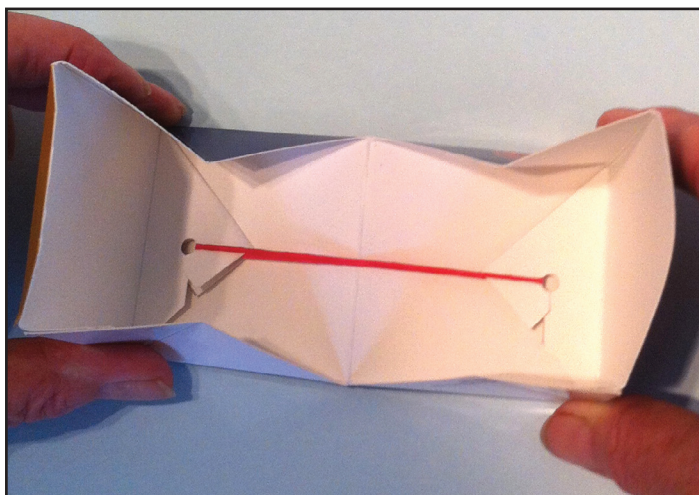


Repeat on the other side and the cube should look like this.



Take the rubber band and hook it into the hole in triangular folded section on the inside.

If you can't get a rubber band of the correct size, use a larger one and tie a knot in it to reduce it to size.



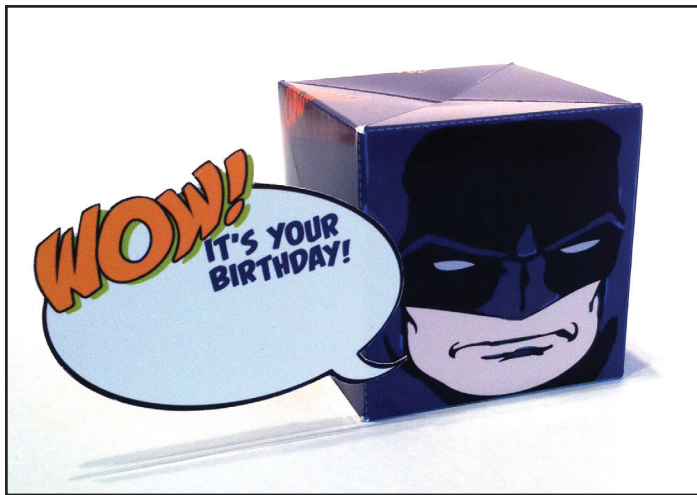
Carefully pull the band across and hook it into the other hole. The rubber band should pull the cube together, if it doesn't seem tight enough you will need to use a smaller band. Do this before moving on to the next step as once the cube is fully made up it is very difficult to change the band.



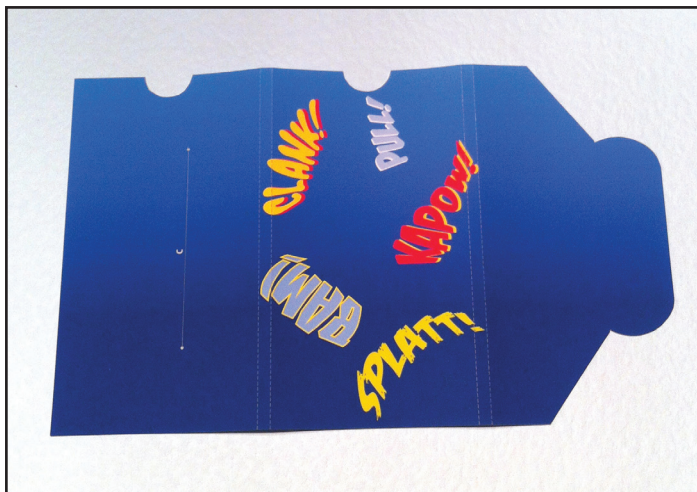
Tuck TAB 'C' behind the side of the cube aligning the fold along Edge 'C' and stick it to the inside. The cube is now finished.

Squeeze the cube together along the edges, it will go flat, release and it will pop out.

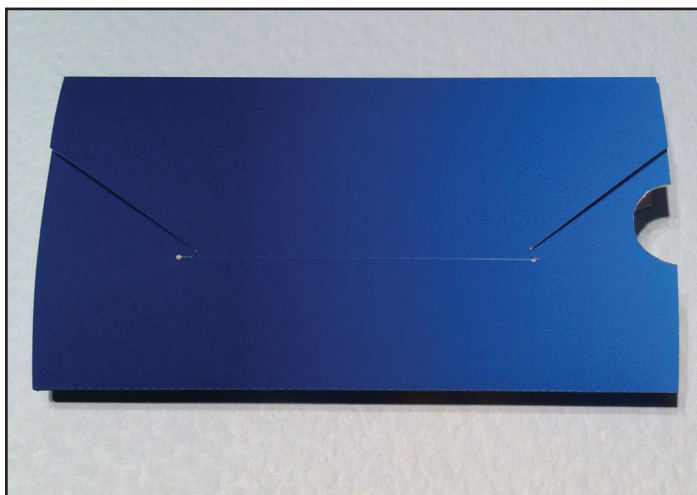
Cut out the speech bubble, write your message in it and glue it to the front of the cube, making sure to only put adhesive on the area shown. Fix the speech bubble in place making sure that the top edge is below the top edge of the cube.



The cube should pop up and look like the picture on the left.



Crease and cut out the sleeve.



Fold the sleeve and tuck the flap into the slot.



Press the cube flat and slide it in so it fits fully inside the sleeve

Continued



When the cube is pulled out of the sleeve, or if the sleeve is opened it will immediately pop back into shape.

The assembled card in its sleeve fits into a standard DL envelope.

THERE ARE TWO POP-UP BLOCKHEADS CURRENTLY AVAILABLE, MORE TO FOLLOW.

