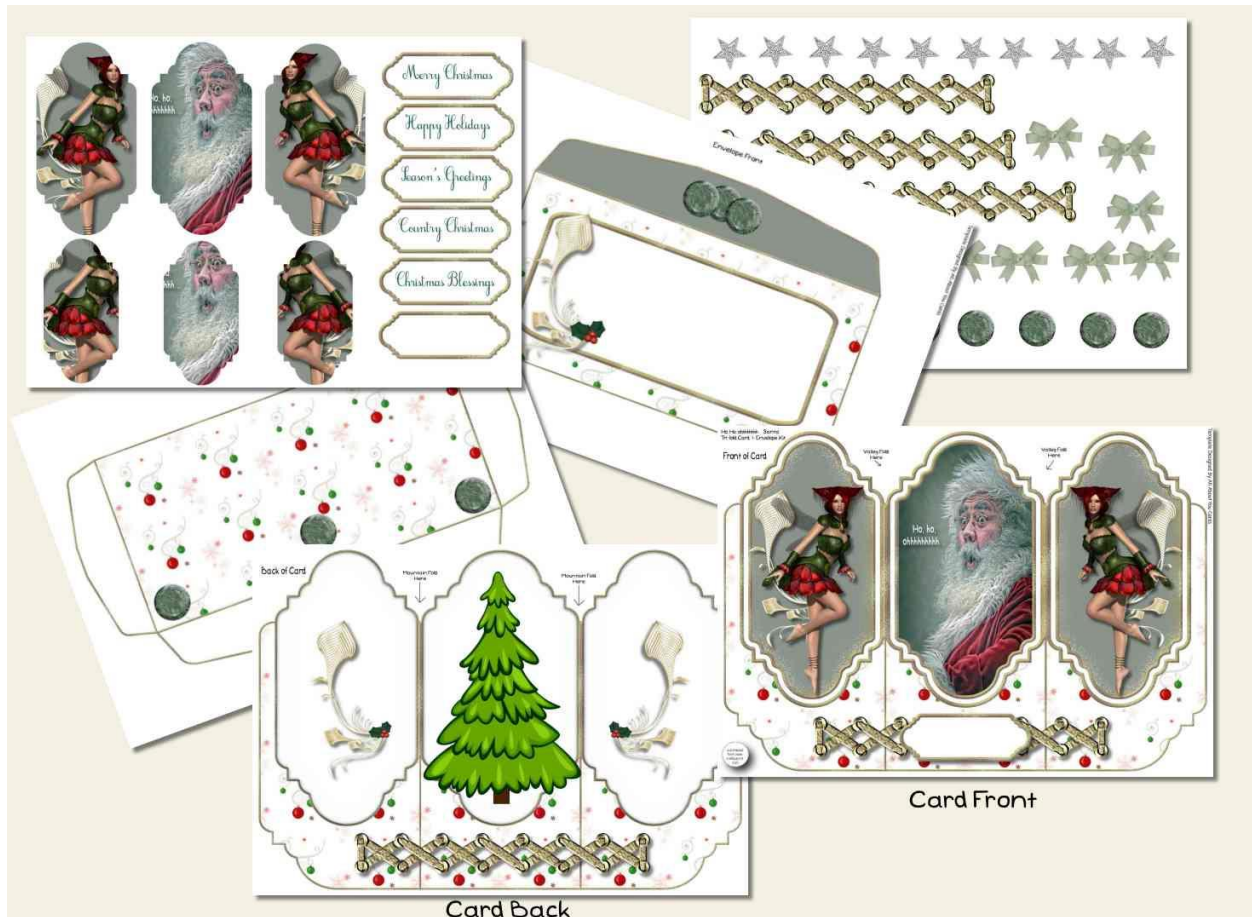


Tri-fold Card & Envelope Tutorial

1. First you will need to print out all of the sheets in the kit. Which will include: 1 card front, 1 card back, card front pyramid layers, sentiment tags, extra decoupage pieces, 1 envelope front, and 1 envelope back.



2. Next you will need to cut out all of the pieces.
3. Now you will glue the front and the back pieces together to form the card base.
4. Add the pyramid layers to the front of the card, a sentiment tag of your choice and any embellishments or decoupage pieces you choose to use.
5. Mountain fold the 3 flaps on the envelope back and glue them to the inside of the envelope front piece. Your card & matching envelope are complete.