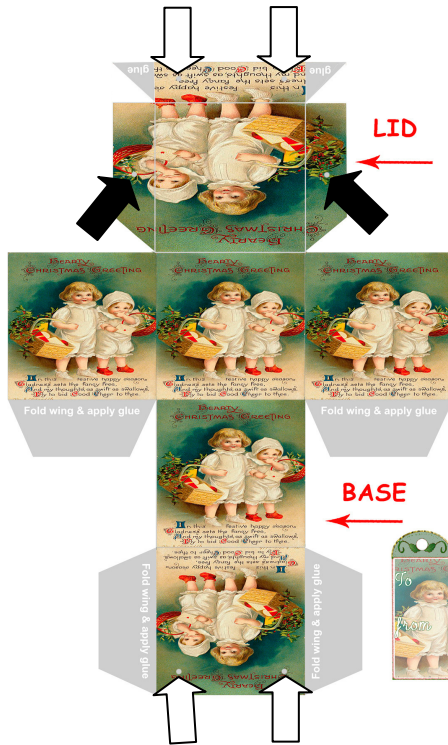


INSTRUCTIONS



Print on around 190gsm white card & cut out the box and tag

optional Punch holes in top front of box lip and lid for thin ribbon to thread through as a tie for the lid – there are small grey dots printed on sheet where the holes should be punched so the holes line up (white arrows show where grey dots are in picture left)

optional If hanging on Christmas tree also punch holes in the box lid rim again as indicated by the printed grey dots, to thread a separate ribbon through (black arrows show where grey dots are in picture left)

Fold *in* all divisions between picture squares and the grey flaps inc small box lid ones at top

Apply glue/ double sided sticky tape to all the grey flaps on the grey side, fold the box into shape and stick. It will become apparent how box forms and where to stick the flaps once all divisions between images are folded and box has taken shape

Punch hole in tag and, if optional lid tie used, attach by threading the box lid ribbon through the tag tie thread either end of ribbon through holes where bottom white arrows are in diagram, then thread through where top white arrows are in diagram, then thread on tag, and then tie the ribbon in a bow

Can optionally varnish the finished box or paint with glitter gel for an iridescent effect, or highlight with glitter glue

