

# Tunnel Card and Box Assembly

This card has been identified by several different names for its format. It has been called a tunnel card, a story card or a shadow box card. I use the term Tunnel Card since the outside leads you into the inside 3D graphics with intricate cutout designs. The kit comes with a box for the card to safely be stored in. If provided, the spine identifies the card within.

This box envelope is not the final envelope for mailing. The storage box envelope is 6x6 inches. The files are in a Print N Cut (PNC) format in the cutting file version and delivered in several file formats which allows the pieces to be cut by different cutting machines or hand cut and assembled. The cardmaking version has been enhanced for the ScanNcut machine with a 1pt black scan line around the cutting area.

Please purchase the Cutting file kits if you want to use a different cutting machine. The files have been optimized with cutting lines within the file.

The Cardmaking download has been optimized for scanNcut technology. As a printed file there is a border to indicate where you will need to cut. Within the piece there will be fold lines indicated as a dashed or pale line. Example to the right.

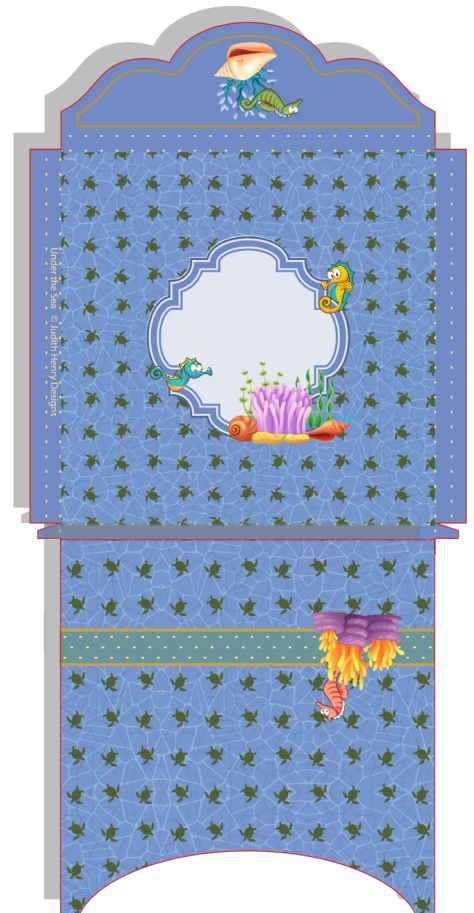
Two versions are included for my first three designs. These Cover are included for different paper sizes. This kit can be printed on letter size or larger cardstock.

**Materials:** I prefer a flat finish card stock because of the multiple folds which is difficult to fold on glossy photo paper. Score lines are within the graphics and identified by the dotted lines or a pale line. In the example they are white. I use a scoring tool such as a scoring board and a bone folder to make crisp folds.

## Box Envelope Assembly

Start by folding each piece on the fold lines. I use score tape to glue the pieces together on the front piece for the two sides and bottom. The tape is attached to the outer fold. As seen in the graphics the back is turned upside down and attached to the front. Folding it up on its two folds now give a ¼" box bottom.

The sides are attached in a similar fashion. The last step is to fold the flap over. I use Easy Peel Oval Fasteners from [www.kooltak.com](http://www.kooltak.com) to seal the box. This allows the card to remain safe in the box for multiple opening.



# Cover Assembly

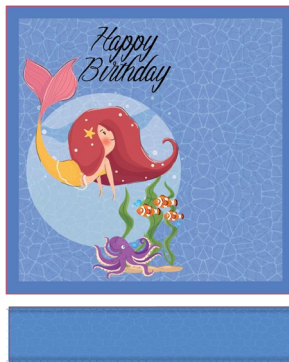
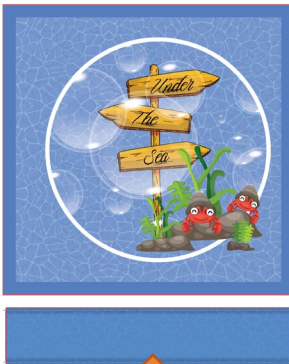
*For 12" x 12" size printing*



The Cover is printed back to back. I have a wide print printer that will print a 12" x 12" image. (Epson Workforce 7110). With the files design for the Honey Bee Tunnel Card, I made the card smaller so that the cover could be printed on one A4 size cardstock or the standard 12 x 12 inch canvas size for larger cutting machines.

I initially included images for the cover that can be printed on an 8.5" x 11.5" cardstock. Whichever printer you have you will need to center print the image on one side (top image), let page rest until the ink set. Flip horizontally and center print the other side .

Group 1

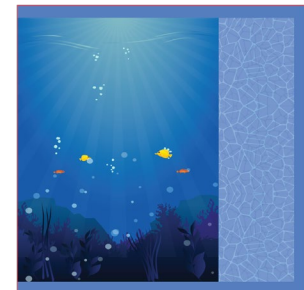
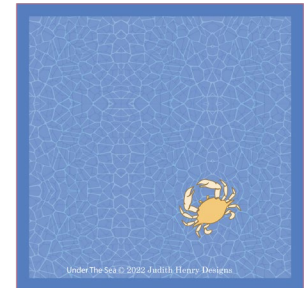


## For letter size printing

The first images is printed on an 8.5" x11" cardstock

Then flip horizontally to print the second image in the group.

Group 2



## Tunnel Assembly

After cutting out the double sided images you will need to connect the two pieces together by gluing the spine onto front side. You don't need to have one for the inside of the cover. It will be stabilized with the tunnel box mechanism.

Each tunnel piece has fold lines on the left and the right. Place score tape on both tabs and fold. The first piece marked as 1 is flipped and placed on the edge of the background image lining up with the top and



bottom. Remove the lining on the scoretape. Fold back. The next layer piece is lined up with the previous piece's folded edge. Repeat for two more layers in the tunnel.

Newer versions include a lining grid on the inside cover for each tunnel pieces.



When the tunnel piece has been glued and folded back it should look like the picture above. This final piece with the seahorse is lined up over the right tunnel tab pieces. It has a fold down the middle which matches the length of the folded tunnel pieces. THE NEW VERSION now has this flap added to right side of the top tunnel piece.



Remove the lining on the scortape of the tunnel tabs. Attach the left half of the seahorse piece over the four tabs. The new version attaches this to the backside of the fourth tunnel piece. Put score tape on the other side of the seahorse piece. You can now close the card which puts all the pieces in place. Carefully remove the score tape liner on the Seahorse piece. It should fit/attach ton the remaining space on the right inside (right light blue rectangle). Now when you open the card the tunnel will popup.

