

3D Pyramid Building Blocks Card by SuzieQ Kuttables

This tutorial is using my design Baby Boy 3D-Pyramid Block Card

This is the finished card front. The 2nd photo is with it closed

This card finishes out at a little less than 6 x 6 inches



Once Upon a
Moonbeam
HE ARRIVED AMID SUCH JOY
The Sweetest Little Gift of All
A PRECIOUS
Baby Boy



Print out the paper. This is not optional as this card requires two sided paper. Then print out Page 1 on the opposite side, which is the base card shown on the left. I print the base card from cardstock.

There is only one line to scored, fold and crease. This is the base card, which means all the other panels are glued on top of this one.

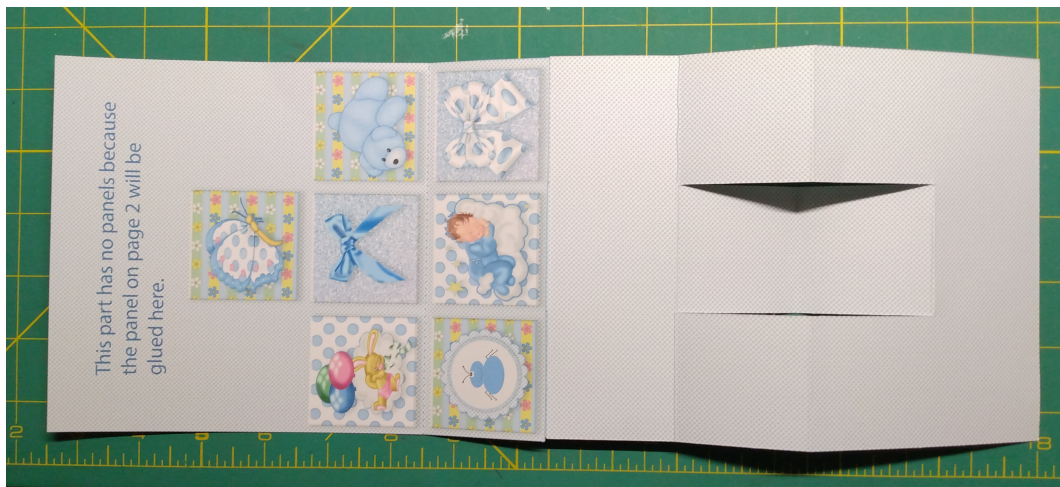


This is page 2 showing the creases. Make sure to only crease the upper crease in the middle. The 2nd and 3rd vertical rows in the middle are cut to create the step show here.

Once I put this together I saw that the glue needed to be on the opposite side of the tabs. Ignore the Glue Here on the tabs in the photos. In the file it will say that on the tabs. You can find the exact scored, fold, and crease template in the file.



Apply glue to just the tabs on the opposite side of the words and attach it with the base card upside down to the edge as shown. Be careful you have the base card going in the correct orientation. See the next photo what it looks like turned over.



Glue the section on the left side being careful not to get too close to the panels edges. Fold this right side part over the left section matching up the upper and side edges.



With both the base and 2nd section glued together it is now time to glue the center section onto the panel that has the extending panel. Please note again to ignore the Glue Here you see in the photo as you actually need to apply glue to the opposite side.



Turn the center panel over and apply glue to just the top 3 panels of the center strip. You don't want to get glue on the other panels. Line up the upper edge of this strip with the combined sections 1 and 2. Section 2 has the words glue here on it. It is actually shown on the 1st photo on this page. Sorry this is not a good photo, I have a piece of paper underneath where I'm applying the glue to protect my work surface.



Once again ignore the Glue Here words. Turn the card so it so it looks like this. Apply glue to just the sections that the arrows are pointing to.



Attach the panel on page 4 to the glued bottom as shown above. Make sure to line up the back of the card to this panel. It is easy to misalign it. It will have the front corner parts exposed as you see in the card.

Attach the individual panel pieces as displayed or as you desire.

NOTE: This shows the plain panel, but if you use the one with the sentiment on it, you would glue it here instead of the plain panel.

Also, I did use for this whole card and it would not stand up by itself until it dried thoroughly.