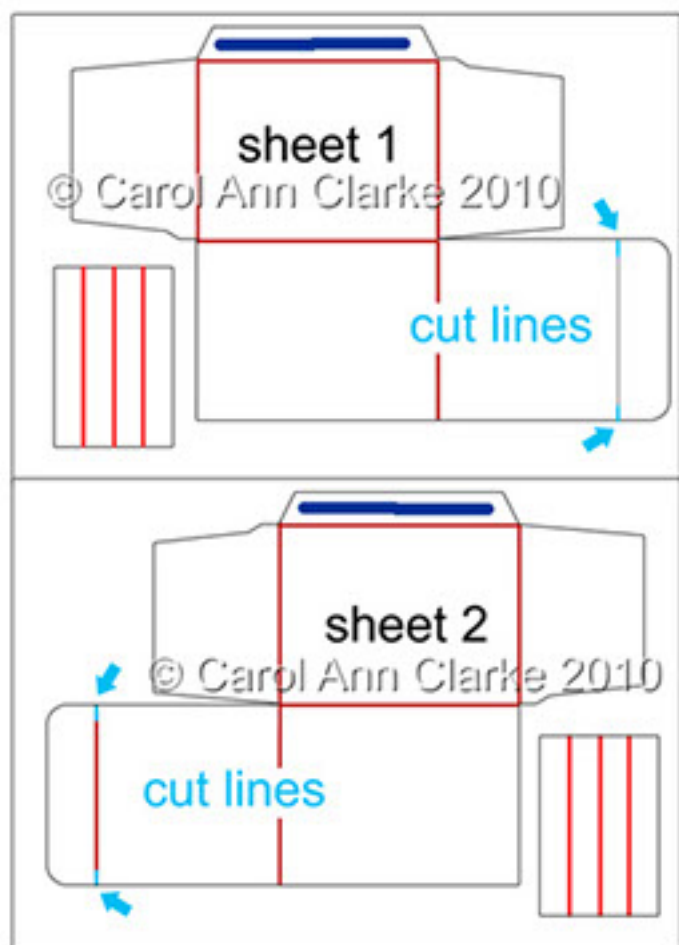


## 3D Cute Transport Boxes



For best results print sheets 1 & 2 onto photo paper or good quality card-stock.

# 3D Cute Transport Boxes



Read these instructions all the way through before making your box

These scoring diagrams will show you exactly where the score lines & cut lines for your box are on each sheet.

Before cutting out use a ruler and scoring tool to score the fold lines on sheets where marked. Use the lines at the edges of the sheets to align your ruler.

Mountain fold the **RED** lines as shown on the diagrams  
Fold and crease all the score lines using a bone folder.

Add dot to the flaps where shown in **BLUE** on the diagrams

There are Emergency light and greetings decoration for the top of your box, you choose which if any to use.

Join sheets 1 & 2 together



Turn over and join the remaining side together

## 3D Cute Transport Boxes



There are 2 ways you can fold your top decoration. The photo on the left show it folded into a triangle shape adhered at the bottom.

The photo on the right shows it folded like an inverted T with the 2 centre panels adhered together.

You can choose which you'd prefer to use.



Refold your box so the top is uppermost and adhere your top decoration aligning it along an imaginary line from side to side across the top of the box



My box now looks like this from the side



Fold in the front and back flaps. The small cut lines will 'engage' with the flaps to ensure your box stays shut

My box now looks like this from the front

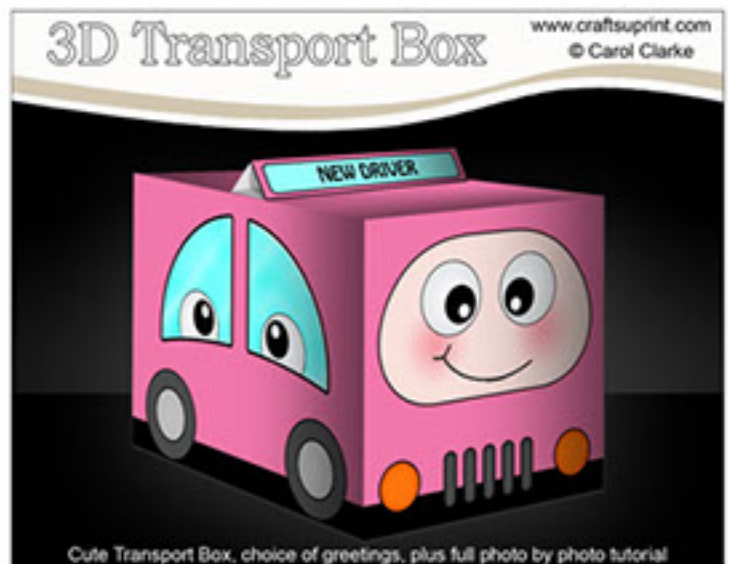
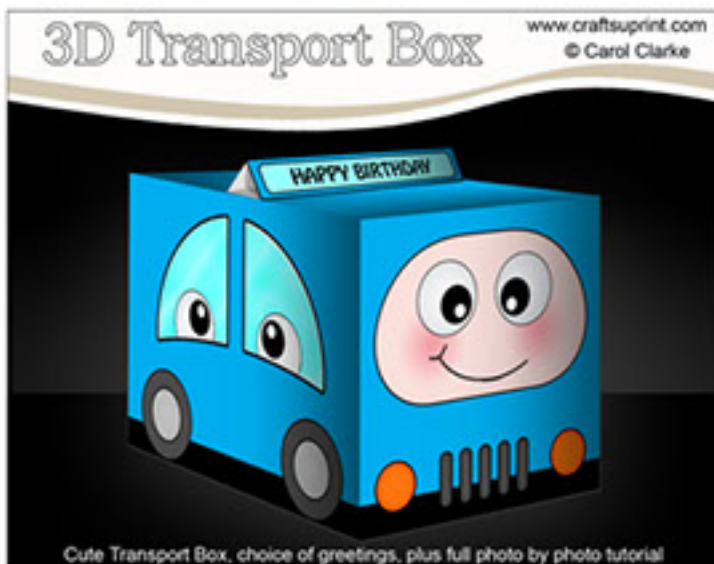
# 3D Cute Transport Boxes



These photos show how great your box will look from all sides!



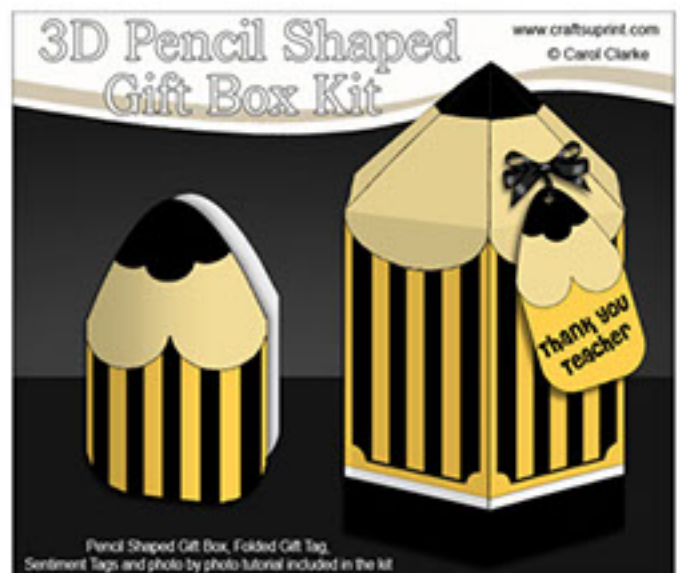
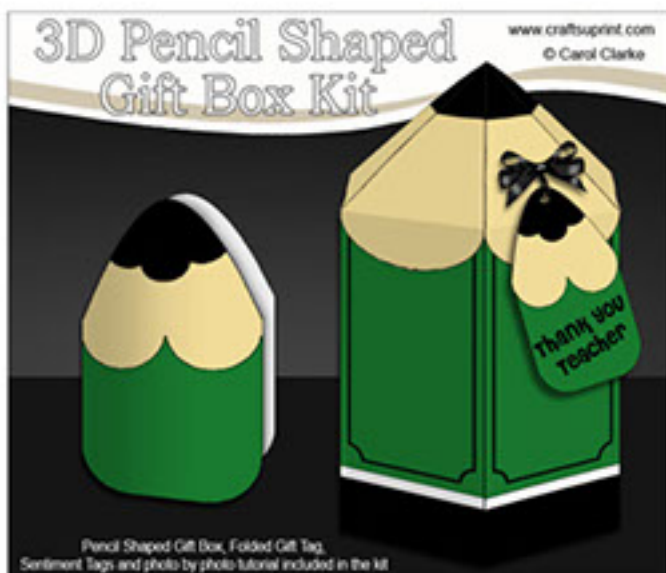
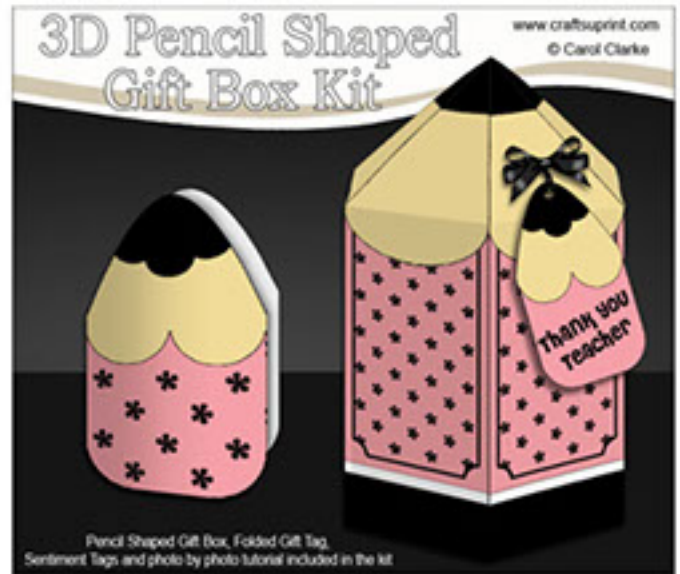
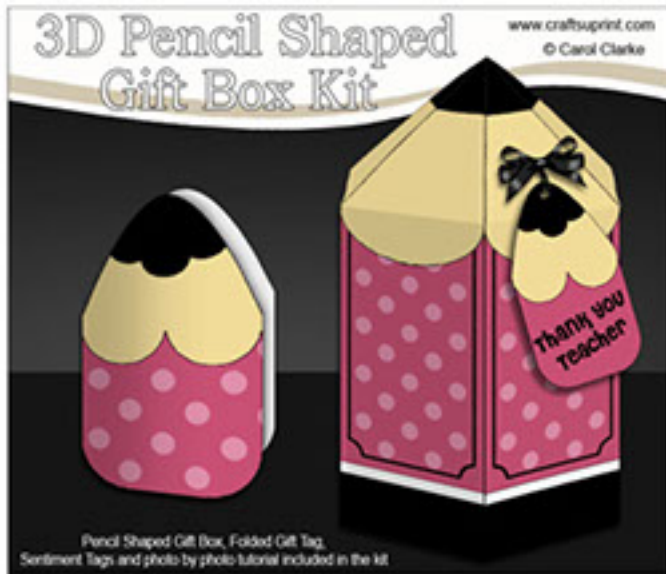
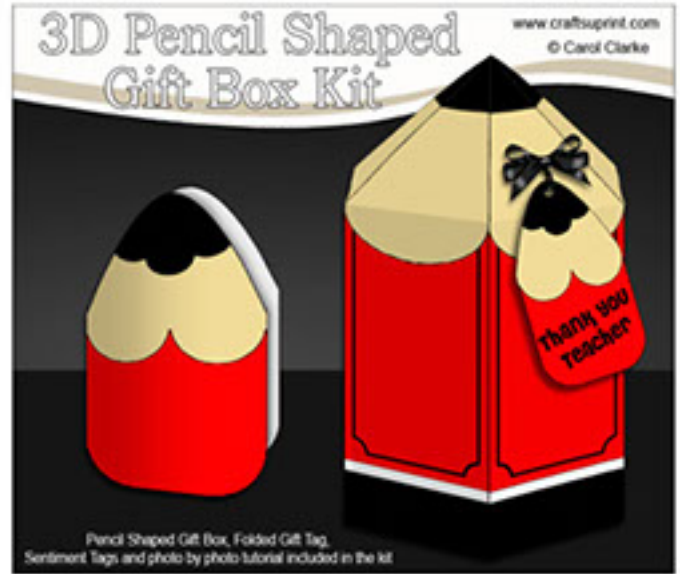
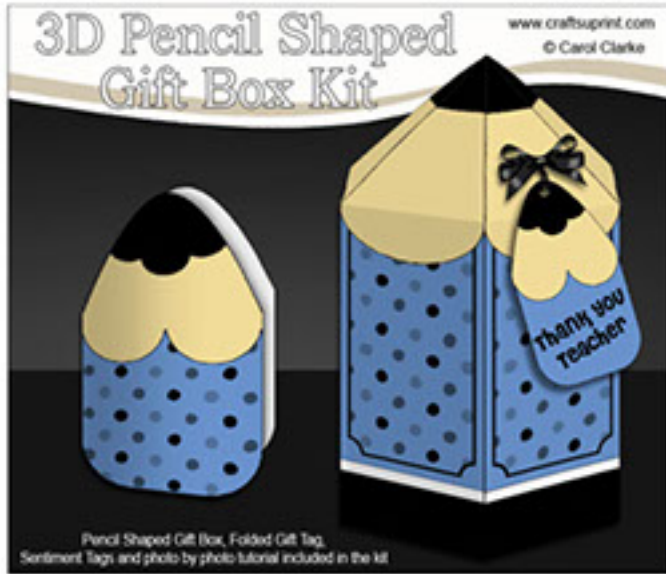
### Cute Transport Boxes:-



Cute Critter Boxes:-



### Pencil Shaped Gift Box:-



### 3D Cracker Favour/Gift Boxes:-





### Cake Slice Treat Boxes:-



### Handbag Gift Boxes:-



### Cute Character Gift Bags :-



### 3D Cupcake Box Mini Kits:-

