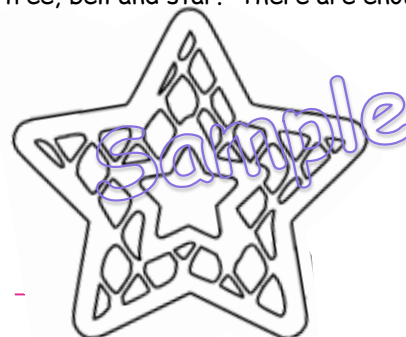
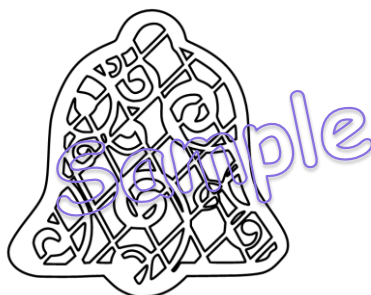




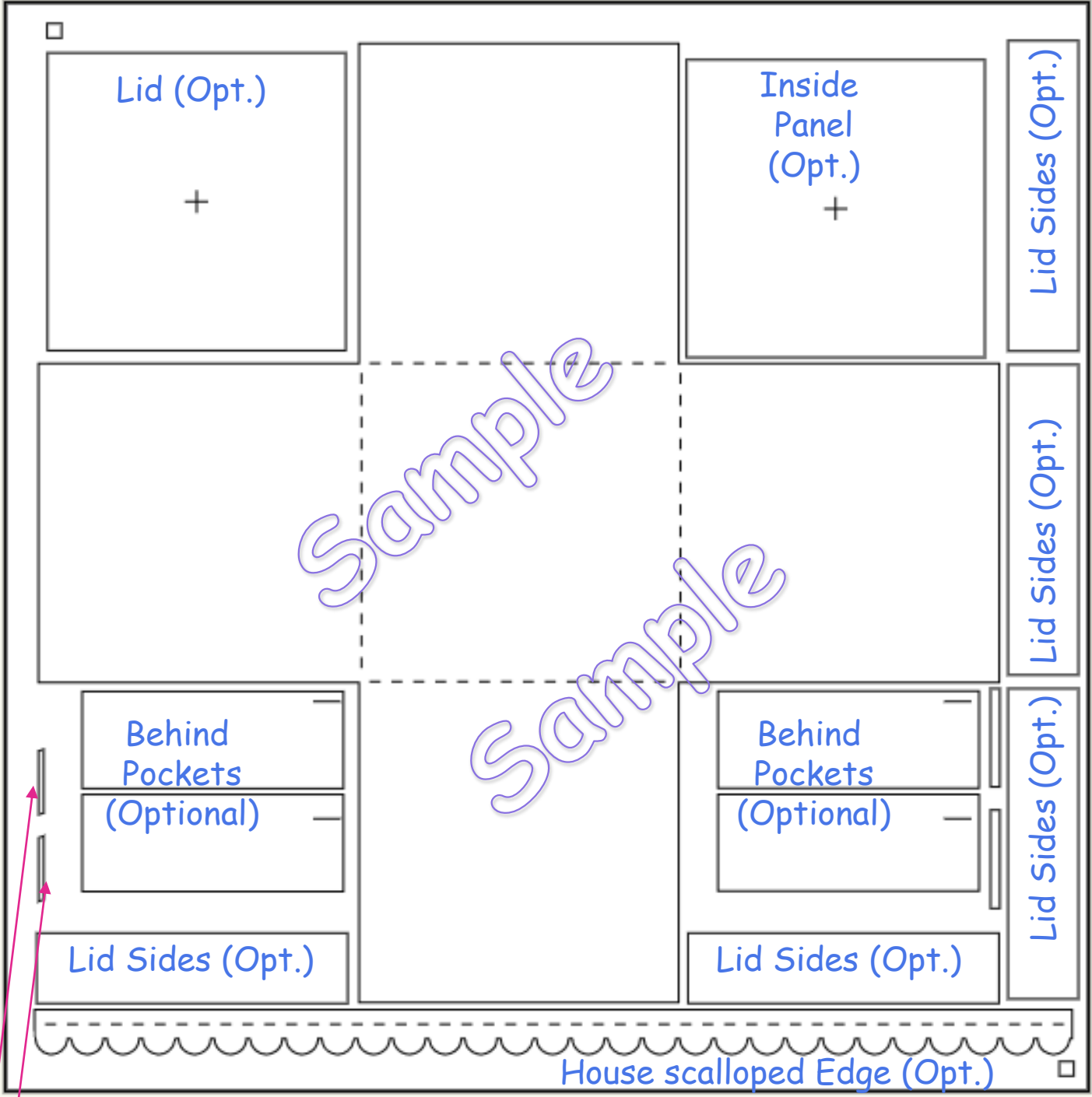
## Included in this package:

- \* Cutting Box (Inside and Outside Panels and Lid)
- \* 2 styles (ornate swirl or lattice cut cut) Bell, Tree and Star
- \* Poinsettia with lace backing
- \* Printable sheet to scissor cut or use ScanNCut Direct Cut
- \* Instructions on how to create your "masterpiece"
- \* Pocket Fronts (5 types) and background
- \* Background for Star, Tree and Bell
- \* Larger Pockets for tea or other items
- \* 3 PNG files to put your photos behind (in a graphics package or PowerPoint)
- \* The miniature house has windows, doors and a base
- \* Miniature house that can be filled with packaged candy or a battery-operated tea light
- \* Scalloped Edge for roof of house
- \* Candy Cane Print to put on roof

Adjust the cutting Box to use for any occasion! *General tip:* This box looks great with a dark red inner layer. I use a Bo-Bunny paper for the inside pockets. Added a gold paint to the tree, bell and star. There are enough pockets and inserts to make two Christmas Exploding Boxes.

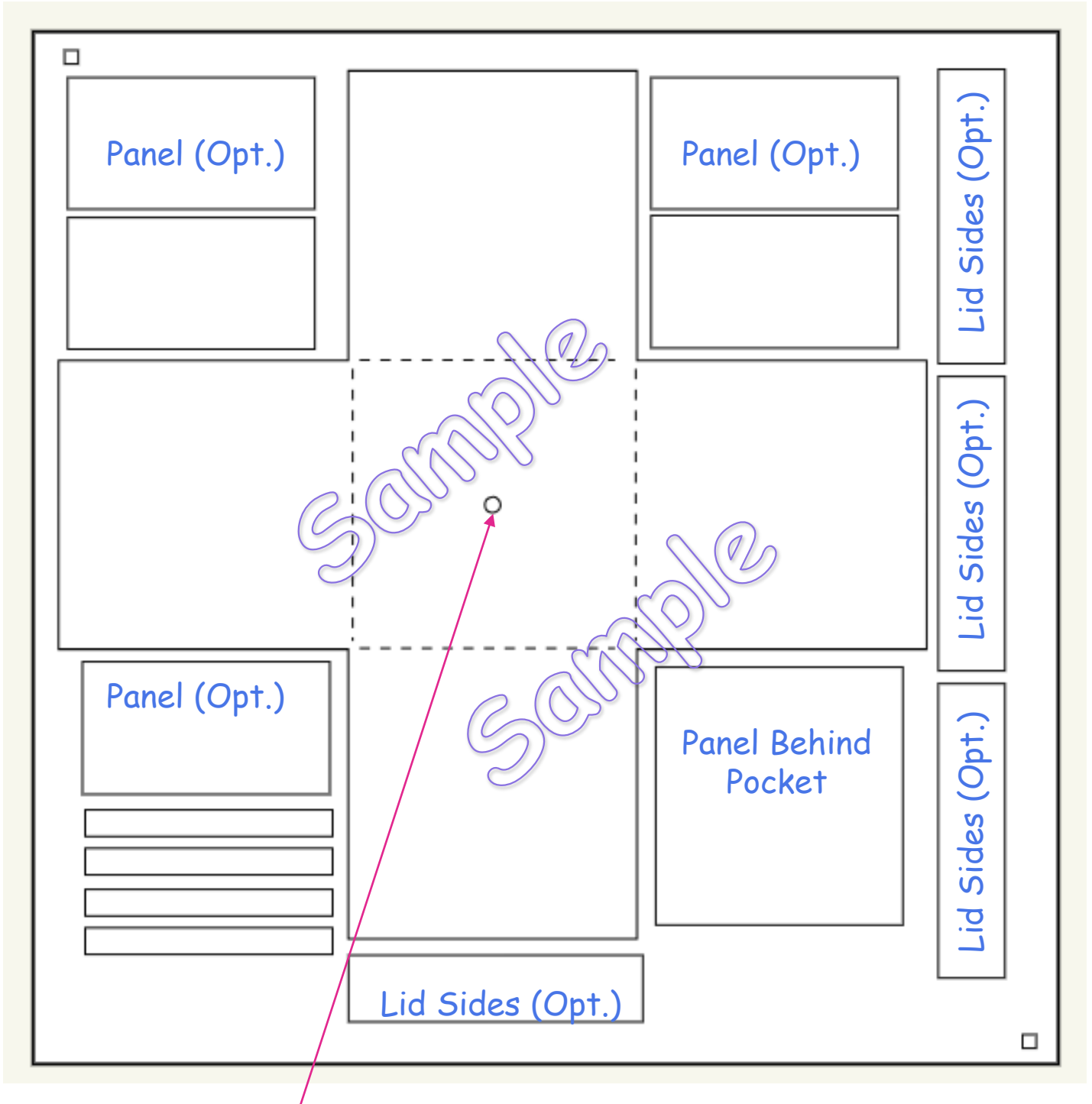


Outer Box (Print on Double Sided Patterned Cardstock)



Optional For Tags

## Inner Box (Print on Colored Cardstock)

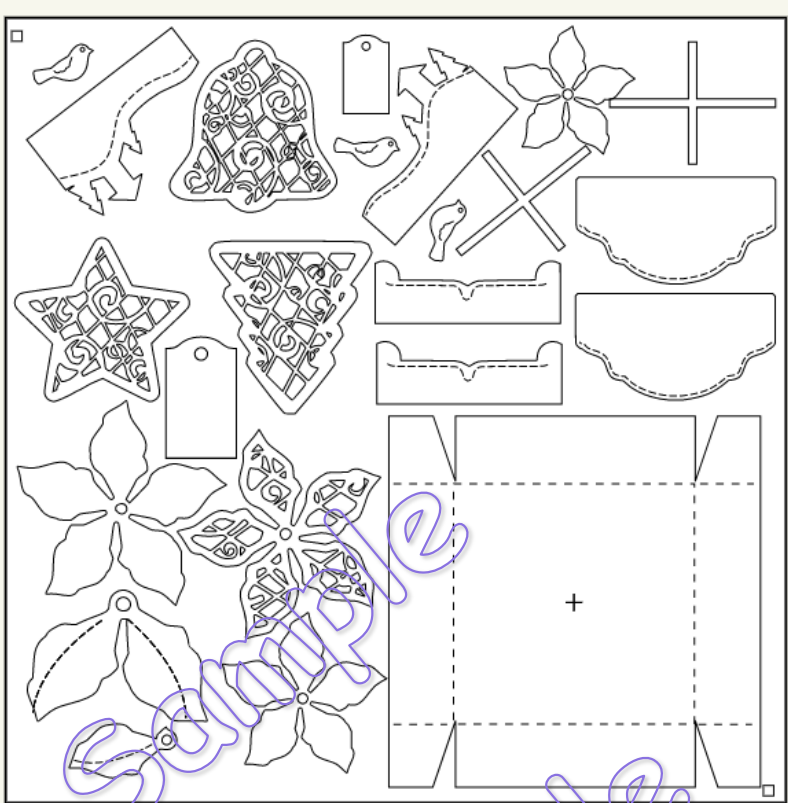


Hole for centering object and also identifies that this is an inner layer. Can cover with an panel or use an embellishment with a brad. Box will still work if you use 2 inner boxes.



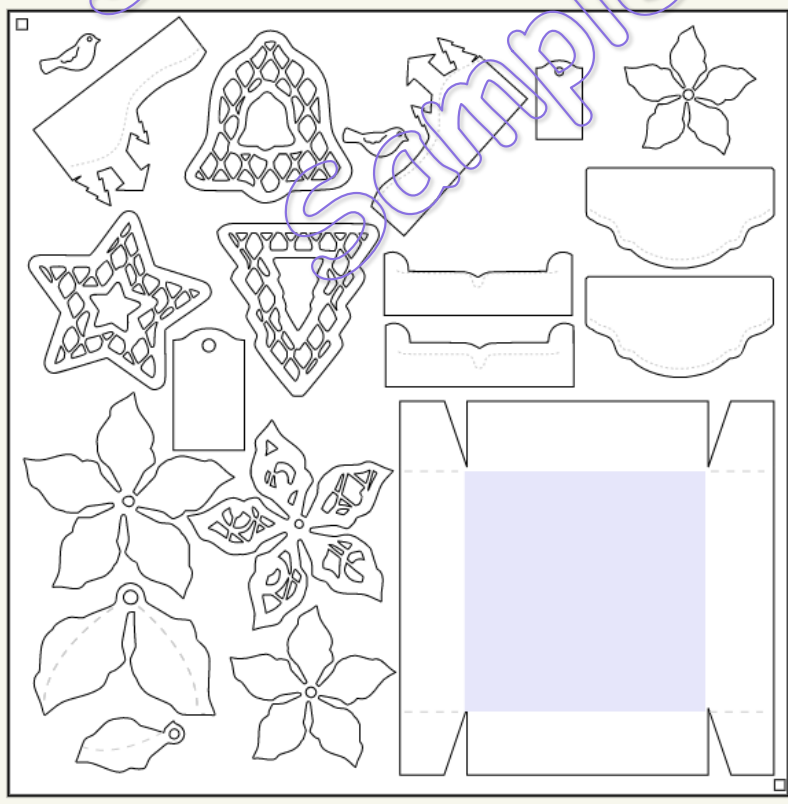
# Top (Print on White Cardstock)

White accent  
To place  
behind  
Pockets (Opt.)



Stars, Bells, Trees  
and Poinsettia  
be painted, embossed,  
bejewelled

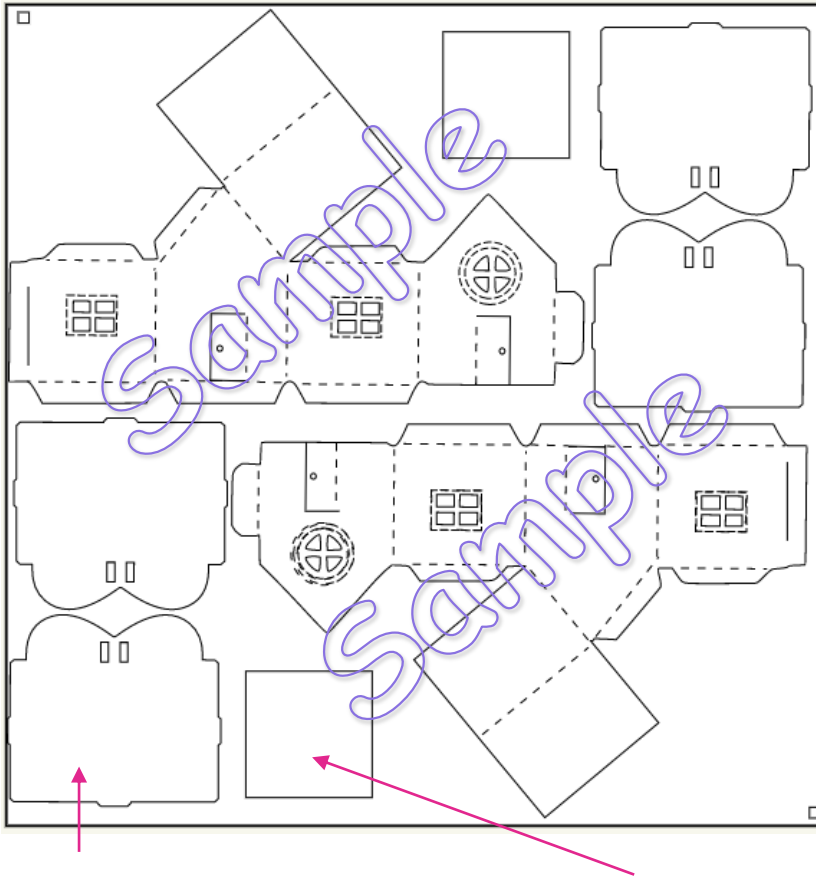
Lid with  
Small cut to use  
for centering,  
Can cover  
with Optional Panel



There are 2 files, use which ever star, bell, tree pattern you prefer. [I got carried away and couldn't choose my favorite]



# Pockets (Print on patterned Cardstock)

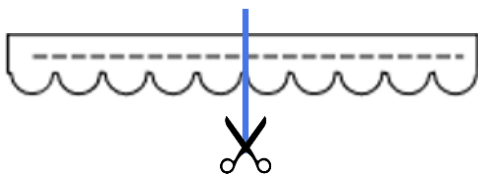


## To assemble house

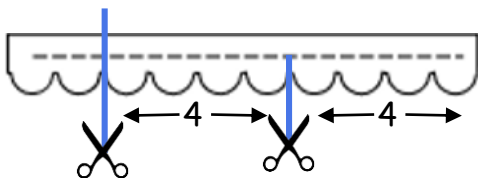
1. Use distress inks to add dimension to house, around windows, doors, etc.
2. Make folds.
3. Glue Base to tabs with liquid glue. The tabs should be on the bottom.
4. The front of the building opens and closes to add candy or electric tea light.
5. Glue tabs to roof.
6. Add scalloped edging.
7. Glue center of house to Christmas Exploding Box.
8. Add embellishments (jewels, stickers, birds, fake candy)

Present, add small rectangle **A** to front. Can tie ribbon to holes

Base to be glued to bottom of house



Sides of the house cut at 5 semi-circles



Front and back of house cut at 8 semi-circles, fold in center. Glue the back of house down. At the front where the whole side opens (optional), only glue down the top along roof.



Glue Paper candy cane to scalloped edging, or add tiny decorations. (Optional)



# Christmas Exploding Box Items

Adapt this box for other celebrations by substituting other items.

## 1. Items to put in the gift box

- Gift Cards / money
- Tickets
- Pictures
- Jewellery (necklaces, bracelets, rings, earrings, etc.)
- Beauty items (shampoo or perfume samples, face masks, chapsticks, bubble bath, mini hand lotion)
- Notes ("thank you"s, poems, I love you because . . .)
- Seeds
- Candy
- Flowers (Silk, Paper, etc.)
- Mini tea pot, tea cup, spoon, packaged tea
- Food (Wrapped cookie or cupcake)
- Happy birthday tag, candle, cupcake, matches, sparkler, balloons
- Get Well Package: Cough drops, dried chicken soup, silk or paper flowers, butterfly, sentiment, package of decorated tissues, candy, mini books, apple cider or hot chocolate, small hand lotion. Chapstick, mug
- At top, replace poinsettia with curled ribbon (Optional). Add candy, makeup, etc. to top.
- Add a small ornament or trinket to center of box.

Any items that could spill or damage your exploding box should be wrapped  
(ie cupcakes, hand cream, loose candies)

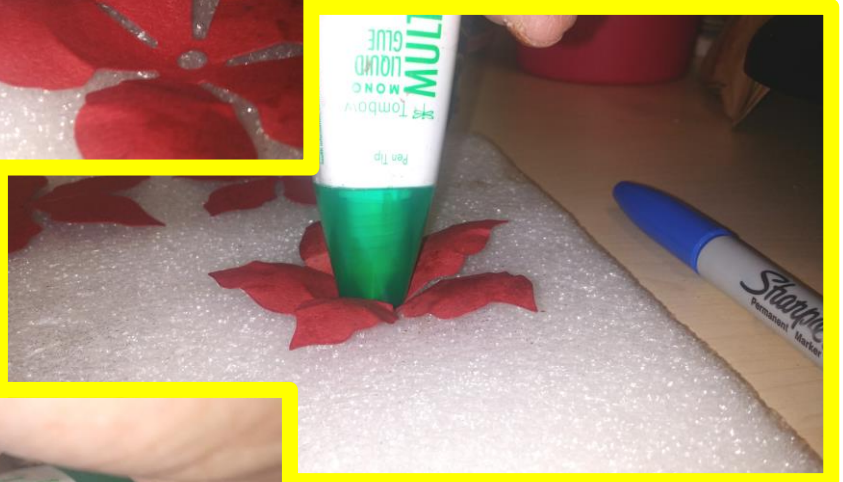
Items that are too big to fit into box can be grouped together and presented beside box  
(i.e. mugs with hot chocolate, soup, etc.)

## For Poinsettia - See Tutorial on CraftsUPrint

Other tips: Use a rounded edge and packing foam, with a bit of water to shape leaves and flower.

Be gentle around lace edges of Poinsettia. You don't need special tools, use what you have (although I do love the mini-sprayer). Don't use too much water or paper will rip.

Use colored cardstock or distress inks, etc. Embellish with glitter, metallic paint etc.





# Print and Cut



Included are printable pages. Print on cardstock or plain paper. Cut with scissors or use ScanNCut to direct cut. Can add your own sentiments or stamps.

There are also 3 PNG files that you can place over pictures in graphics packages or PowerPoint, etc.

The Made with Love can be glued to the bottom or added at the top with poinsettia



## General Tips

1. Use Scor-Tape (Sookwang), place tape close to edges to give more area to fill pockets
2. If you use a pocket front, you can cut a background border in half.



## Decorating Tips

1. Use distress inks, to add texture to outer edges of box.
2. Add dimension to flowers by fan folding or use a ball shaping tool. Add dimension to floral by using ball tool and attach with wet glue at a few points
3. Add glitter glue, jewels, pearls, lace, etc.