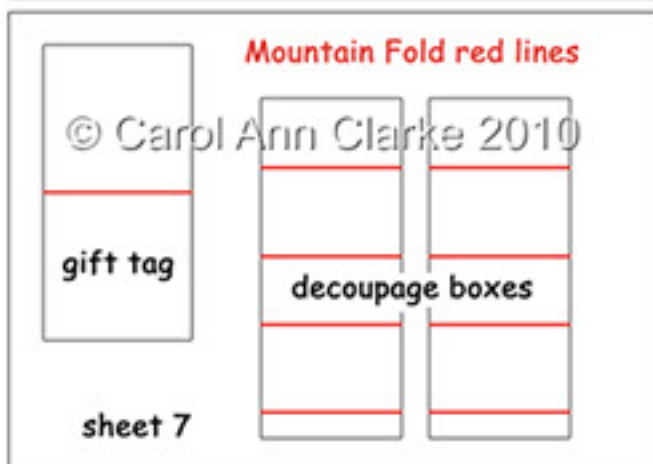
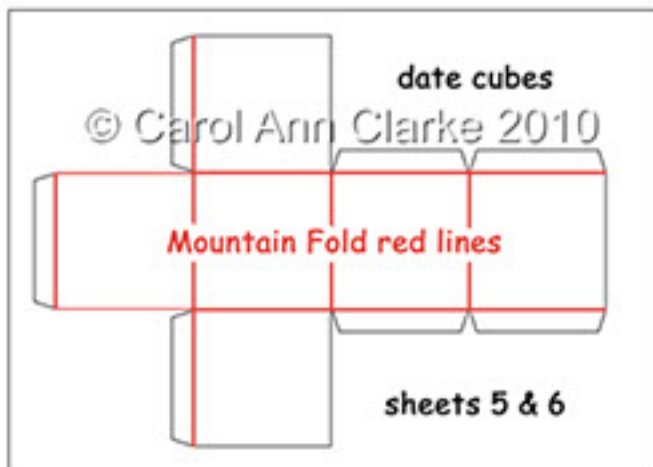
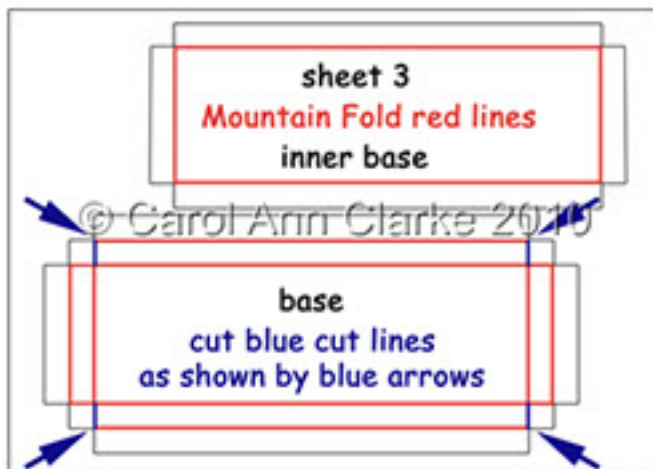
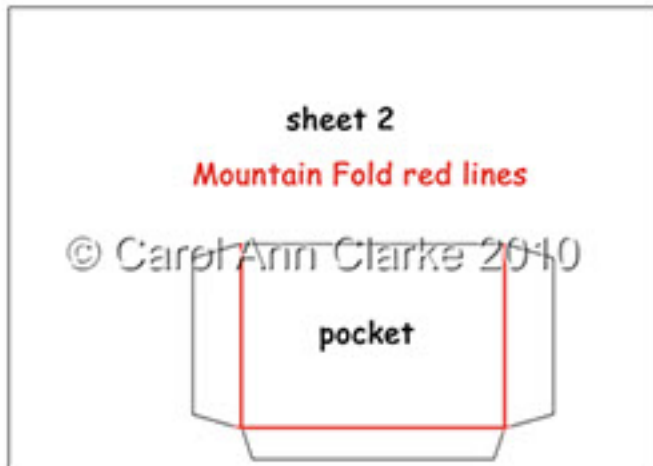


# 3D Perpetual Calendar Cube Desk Set



For best results print all sheets onto photo paper or good quality cardstock

# 3D Perpetual Calendar Cube Desk Set



Read these instructions all the way through before making your calendar set

These scoring diagrams will show you exactly where the score lines are on each sheet.

Before cutting out use a ruler and scoring tool to score the fold lines on sheets where marked. Use the lines at the edges of the sheets to align your ruler.

Mountain fold the red lines as shown on the diagrams

cut the blue lines on sheet 3 as shown on the diagram.

Fold and crease all the score lines using a bone folder.

When cutting out I suggest you mark the back of the front and back inner & outer pieces so you know which is which.



# 3D Perpetual Calendar Cube Desk Set



Take the card base and turn over. Add double sided tape where shown in red on the left photo

Fold in and adhere the 2 shorter sides as shown in the right photo



Lift up one of the long sides and fold in the small glue flaps



Lift up the end of the drawer and making sure the corner is square adhere in place. Repeat for the remaining 3 corners



Fold in the remaining 2 sides and adhere in place to complete the base.



# 3D Perpetual Calendar Cube Desk Set



Take the base inner and add adhesive to the flap marked 'front' as shown in red on the photo. Adhesive could also be added to the other flaps if wished, but I found this way it was easier to add to the base in the next step.



Slip the base inner inside the base you created earlier. Make sure you know which side is the front and which the back. The inner base slopes every so slightly towards the back to ensure your months and date cubes sit securely in place.



Place an outer back face down and adhere an inner side in place using a glue stick. Lining up the outer edges of the side pieces. There will be a small white stripe at the fold line, this is to reduce bulk at the corners. Repeat with the 2nd outer back



Adhere the inner back in place leaving a small gap at the side to match the white stripe in the step above. Please note that the inner back is larger than the outer back. This is correct and will be addressed in the next step



# 3D Perpetual Calendar Cube Desk Set



Adhere the remaining outer back using a glue stick, once again leaving a small gap at the side



A back view showing the overlap before adhering



Add strong double sided to the sides and back of the base as shown in red on the photos



Apply the back and sides around the edge of the base making sure to line up the front edges and bottom edges and press to secure in place.



Your base, back and sides will now look like this.



## 3D Perpetual Calendar Cube Desk Set



Take a cube and add adhesive to the flaps where shown in red and blue on the photo. If you wish to add a gift into the cube then don't add adhesive to the flaps where shown in blue on the photo



Lift up one of the sides and adhere to the adhesive on the flap



Do the same with the other side.



Fold in the top flaps and make sure all sides are adhered in place. Make the 2nd cube in the same way, and add them both on top of the months boxes making sure the correct date is showing at the front.



# 3D Perpetual Calendar Cube Desk Set



As my perpetual calendar sets are intended to be used for many years I have designed decoupage boxes to keep the decoupage characters upright so they don't 'flop' over after a while.

Add dst to the glue flaps on the decoupage boxes. Fold and adhere into tubes



Add dst to one of the decoupage boxes on a short and a wide side.

Adhere to either the left or right side of the base (the choice is yours!)

Make sure that the shorter side of the box is adhered to the base and the wider side is adhered to the inner back.



Cut the 2nd decoupage box to be slightly narrower the width of the upper area of the decoupage character.

Once again add dst to a short and a wide side.



Adhere the 2nd decoupage box on top of the 1st box.

Make sure that the shorter side of the box is adhered to the top of the 1st decoupage box and the wider side is again adhered to the inner back.

Add the character to the front of the boxes using dst.



# 3D Perpetual Calendar Cube Desk Set



Your Calendar set will now look like this with the cubes from the front



Fold in the flaps on the pocket. Fold in and adhere the side flaps first and then the bottom flap last. This is to make sure that when you add the month cards into the pocket they slip in easily and don't 'catch' on the top edge of the bottom pocket flap.



align the bottom edge of the pocket just with the bottom edge of the back of the set. Make sure you place the pocket behind the cubes and not the decoupage character

Cut out the month cards and slip them into the pocket



Your calendar set will now look like this from the front.

There are greetings panels that will fit along the front if you wish too.

Cut out and fold the matching gift tag



# 3D Perpetual Calendar Cube Desk Set



Your completed Perpetual Calendar Cube Desk Set



### 3D Floral Perpetual Calendars:-





### 3D Floral Perpetual Calendars:-





### 3D Everlasting Easel Calendar Drawer Gift Set:-





### 3D Everlasting On the Shelf Card Calendars:-

#### 3D On the Shelf Calendar

www.craftsuprint.com

shelf NOT included in the kit!

front view

side view

January

1	2	3	4	5	6	7
8	9	10	11	12	13	14
15	16	17	18	19	20	21
22	23	24	25	26	27	28
29	30	31				

A fabulous card with everlasting calendar that will sit on/over the edge of a shelf. Decoupage and matching envelope included in the kit

© Carol Clarke

#### 3D On the Shelf Calendar

www.craftsuprint.com

shelf NOT included in the kit!

front view

side view

January

1	2	3	4	5	6	7
8	9	10	11	12	13	14
15	16	17	18	19	20	21
22	23	24	25	26	27	28
29	30	31				

A fabulous card with everlasting calendar that will sit on/over the edge of a shelf. Decoupage and matching envelope included in the kit

© Carol Clarke

#### 3D On the Shelf Calendar

www.craftsuprint.com

shelf NOT included in the kit!

front view

side view

January

1	2	3	4	5	6	7
8	9	10	11	12	13	14
15	16	17	18	19	20	21
22	23	24	25	26	27	28
29	30	31				

A fabulous card with everlasting calendar that will sit on/over the edge of a shelf. Decoupage and matching envelope included in the kit

© Carol Clarke

#### 3D On the Shelf Calendar

www.craftsuprint.com

shelf NOT included in the kit!

front view

side view

January

1	2	3	4	5	6	7
8	9	10	11	12	13	14
15	16	17	18	19	20	21
22	23	24	25	26	27	28
29	30	31				

A fabulous card with everlasting calendar that will sit on/over the edge of a shelf. Decoupage and matching envelope included in the kit

© Carol Clarke

#### 3D On the Shelf Calendar

www.craftsuprint.com

shelf NOT included in the kit!

front view

side view

January

1	2	3	4	5	6	7
8	9	10	11	12	13	14
15	16	17	18	19	20	21
22	23	24	25	26	27	28
29	30	31				

A fabulous card with everlasting calendar that will sit on/over the edge of a shelf. Decoupage and matching envelope included in the kit

© Carol Clarke

#### 3D On the Shelf Calendar

www.craftsuprint.com

shelf NOT included in the kit!

front view

side view

January

1	2	3	4	5	6	7
8	9	10	11	12	13	14
15	16	17	18	19	20	21
22	23	24	25	26	27	28
29	30	31				

A fabulous card with everlasting calendar that will sit on/over the edge of a shelf. Decoupage and matching envelope included in the kit

© Carol Clarke