

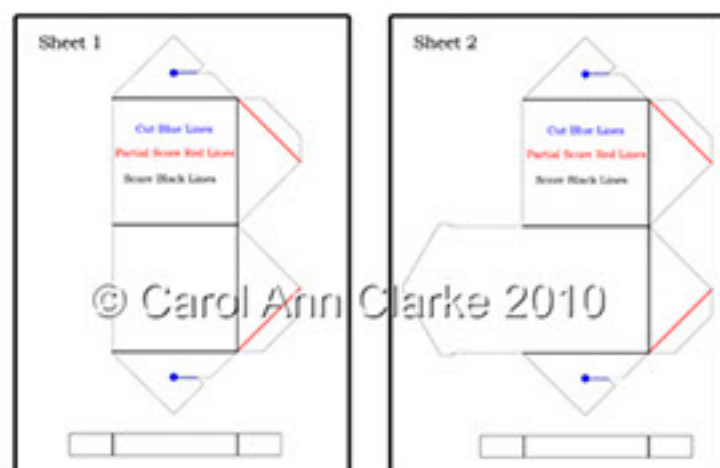
# 3D Rubber Band Pop Up Box Cards

Fabulous keepsake cards that are simple to make but look so stunning when made up and will WOW the recipient.



For best results print sheets 1 to 3 onto photo paper or good quality cardstock and sheets 5 & 6 onto good quality paper. For a pretty lining print sheet 4 onto the reverse of sheets 1 & 2 and sheet 7 onto the reverse of sheet 5 & 6

# 3D Rubber Band Pop Up Box Cards



Please read the instructions all the way through before starting to make up.

before cutting out use a ruler and scoring tool to score the fold lines on sheets where marked I have marked these in red on the diagram Note the red partial score lines and cut on the blue lines. Fold and crease all the score lines using a bone folder

I didn't print the backing onto the reverse of sheets 5 & 6 to make it clearer for you to see what I am doing.



left photo - Adhere the inner back panel in place.

right photo - Add double sided tape to one of the pieces where marked in red on the photo making sure you avoid the hole and elastic slot



Fold in all the tabs. Remove the carrier from the elastic slot pieces as marked in red on the photo



Line up the pieces and adhere together

Add dst to the small flaps as shown in red on the photo

# 3D Rubber Band Pop Up Box Cards



Open the box and attach a rubber band to the hooks



Adding a twist to the band will allow you to fine tune it



Turn upside down and join the 2 pairs of base pieces using the dst we added earlier



Your card will now look like this from above.



Top Photo - Fold and crease the cross bars. Add dst where marked in red

bottom photo - They will be added to the box as per the bottom photo

# 3D Rubber Band Pop Up Box Cards



Add the cross pieces adhering a little below top and so the arms butt against the front and the back of the box



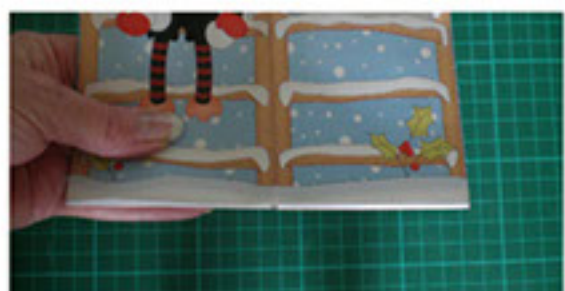
Your card will now look like this



To close your card squish it with the elastic band running left to right. Gently start to fold in the 2 base pieces. Your card will try to resist ... that's the pop up mechanism working lol



Gently make sure that the base pieces are folded into the base of the card until it is fully folded and flat. Make sure the 'seams' on the inside of the base are both on the same side of the elastic band to ensure your card flattens properly and isn't bulky.



# 3D Rubber Band Pop Up Box Cards



Now comes the fun bit .... adding the decoupage!

Add the character using foam tape.

All the other decoupage is separate and you can choose what and where to add it. Adhere it to the card using dst. Do not use foam tape for this or your card will not close.



I added a swing tag on cord

Your decoupage can come 'out of the box', but squish your card to make sure they are mostly within the main area of the card when flattened



Make up the matching envelope using the instructions on the sheets. If you printed the backing paper onto the reverse you'll have a pretty lining to the envelope too.

Flatten your card and slip it into the envelope.

The greetings sentiment can be used as an envelope seal if wished.



## 3D Rubber Band Pop Up Box Cards

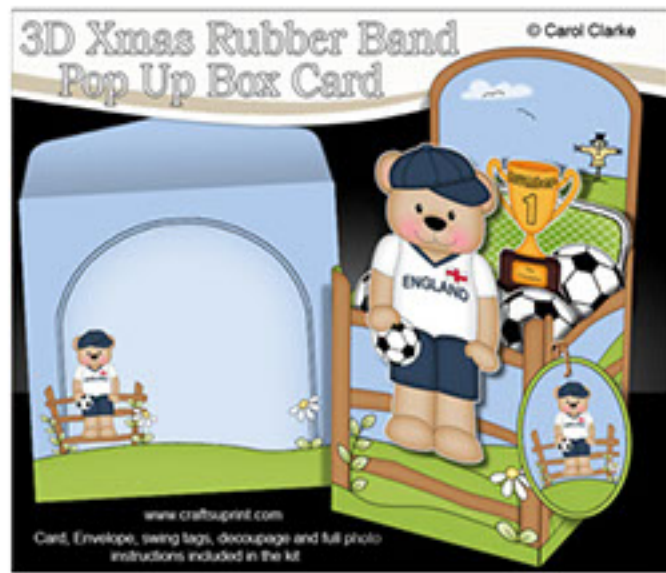


Your Finished Card

Watch the magic and surprise when The rubber band hidden inside the card instantly transforms your beautiful card into a box as if by magic!

With the exception of the front character all the rest of the decoupage and the tag are all separate. And as there's lots of decoupage to choose from ... you can make your card differently every time!

### 3D Rubber Band Pop Up Box Cards:-



### 3D Xmas Rubber Band Pop Up Box Cards:-

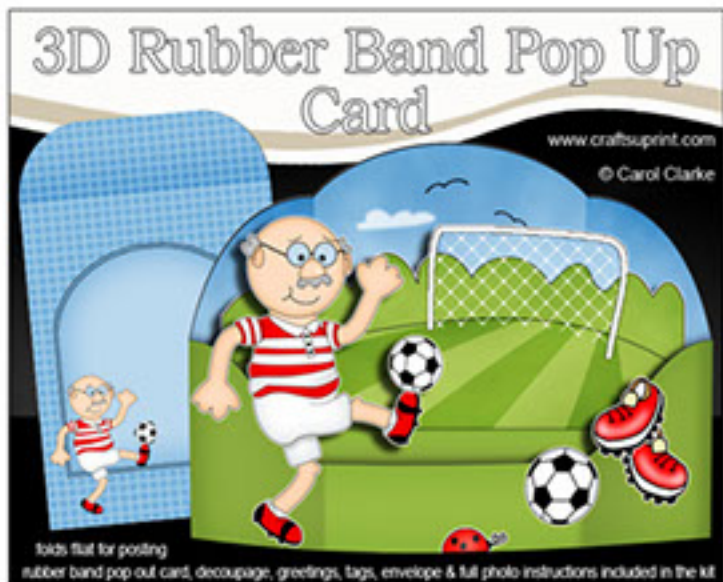
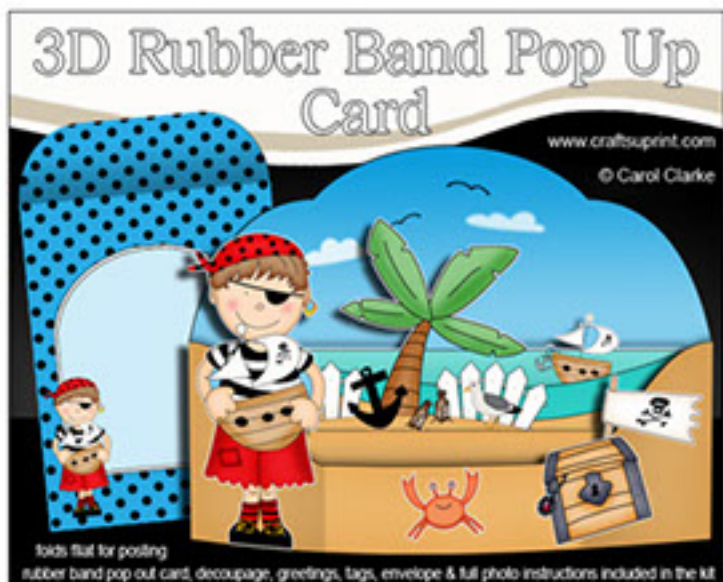




There are lots more to choose from:-



### 3D Pop Up Rubber Band Scene Cards:-



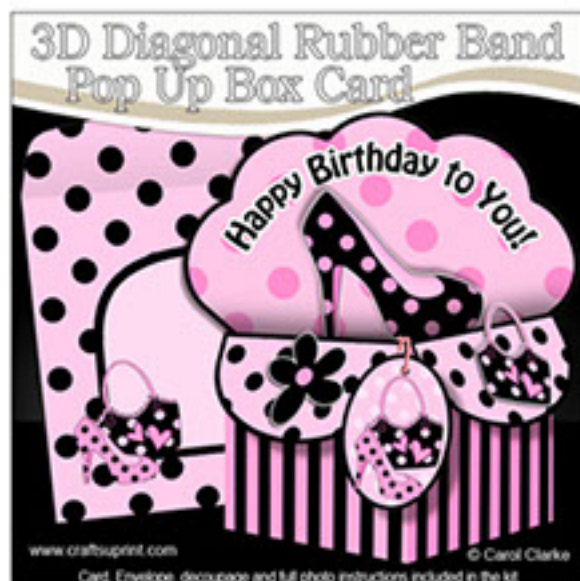
### 3D Rubber Band Pop Up Buildings:-



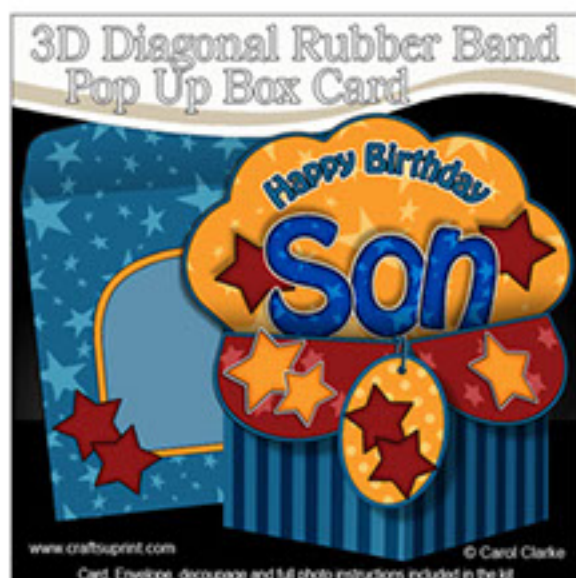
### 3D Rubber Band Pop Up Box Cards:-



### 3D Diagonal Rubber Band Pop Up Box Cards:-



### 3D Diagonal Rubber Band Pop Up Box Cards:-



### 3D Rubber Band Pop Up Police Box :-

