

PRINT ALL SHEETS (EXCEPT THE LINER SHEET) ON A GOOD QUALITY CARD - I HAVE USED 230 GSM PHOTO GLOSS. PRINT THE LINER SHEET ONTO A LIGHTER WEIGHT CARD ABOUT 200 GSM.. ROUGHLY CUT AROUND BOTH SETS OF WHEELS AND BACK THEM ONTO A PIECE OF SCRAP CARD TO ADD STRENGTH.



CUT OUT ALL ELEMENTS



TAKE THE ELEMENTS FOR THE ENGINE SIDES AND SCORE & M FOLD ALL LINES AS INDICATED ON SHEET. JOIN THE SIDES TOGETHER BY THE SIDE TAB.



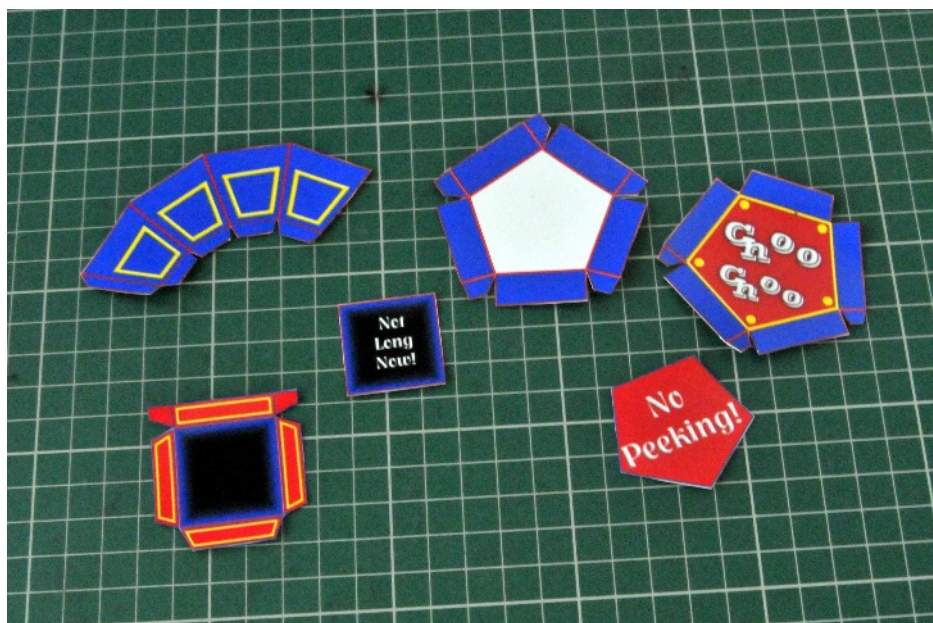
JOIN THE REMAINING TABS USING D/S TAPE OR GLUE TO FORM THE BOX FOR THE ENGINE. ADD THE LINERS TO THE INSIDE OF THE BOX.



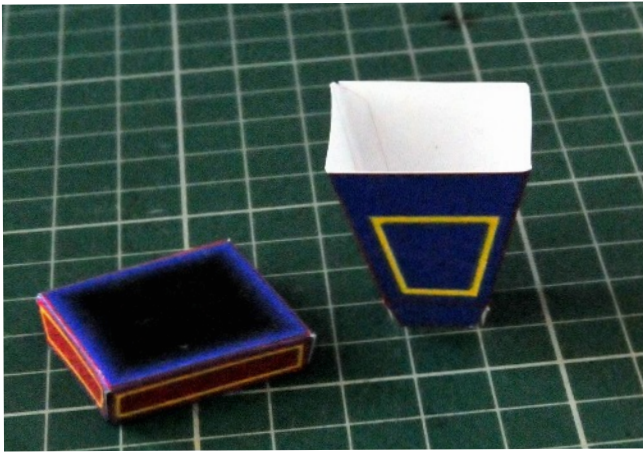
FIX A DOUBLE LAYER OF 3D FOAM PADS IN THE CENTRE OF THE WHEEL MARKINGS



ATTACH ALL FOUR WHEELS AS ABOVE



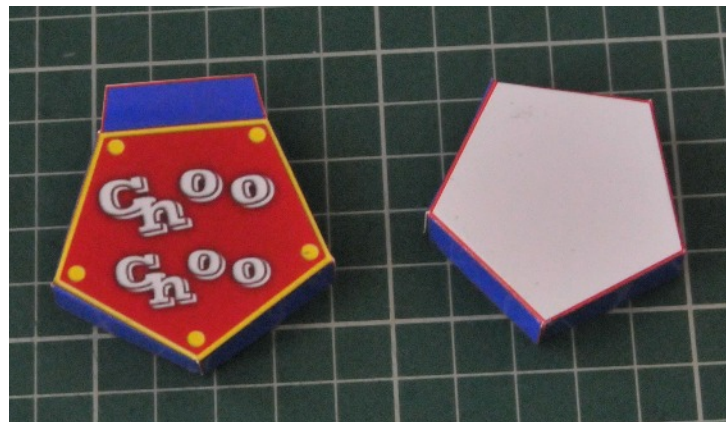
TAKE THE ELEMENTS FOR THE CHIMNEY AND THE FRONT BOX AND SCORE & M FOLD ALL LINES AS INDICATED ON THE SHEET



APPLY GLUE TO THE TABS TO FORM THE CHIMNEY SHAPE AND THE CHIMNEY LID



APPLY GLUE AND FIX THE BACK TAB TO ONE OF THE INSIDE EDGES. FIX THE SECRET MESSAGE TO THE INSIDE OF THE LID.



JOIN THE TABS ON THE FRONT BOX BASE & LID
ADD THE SECRET MESSAGE TO THE INSIDE OF THE FRONT BOX



PLACE THE LID ON THE BASE AND JOIN BY THE BACK TAB



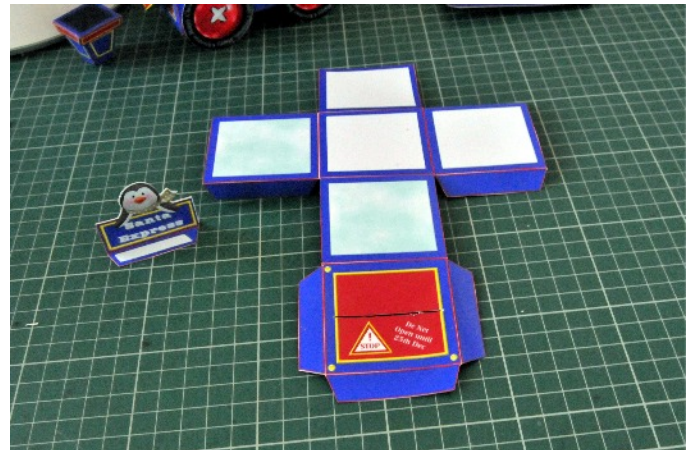
APPLY GLUE TO THE BACK OF THE BOX BASE AND FIX AT THE POSITION MARKED ON THE FRONT OF THE ENGINE



TAKE THE ELEMENTS REQUIRED FOR THE TOP BOX



GLUE THE SANTA ELEMENT BACK TO BACK WITH THE MIRROR IMAGE LINER



SCORE & M FOLD ALL LINES ON THE BOX SECTION AND CUT THE SLOT IN THE LID. VALLEY FOLD THE TABS ON THE SIGNS AND GLUE THE TOP SECTIONS BACK TO BACK. FIX D/S TAPE TO THE TABS.



PASS THE TABS OF THE SIGN THROUGH THE SLOT IN THE LID AND FIX INTO PLACE ON THE WRONG SIDE OF THE LID.



GLUE THE SECRET MESSAGE TO THE INSIDE OF THE LID, COVERING THE TABS OF THE SIGN.