

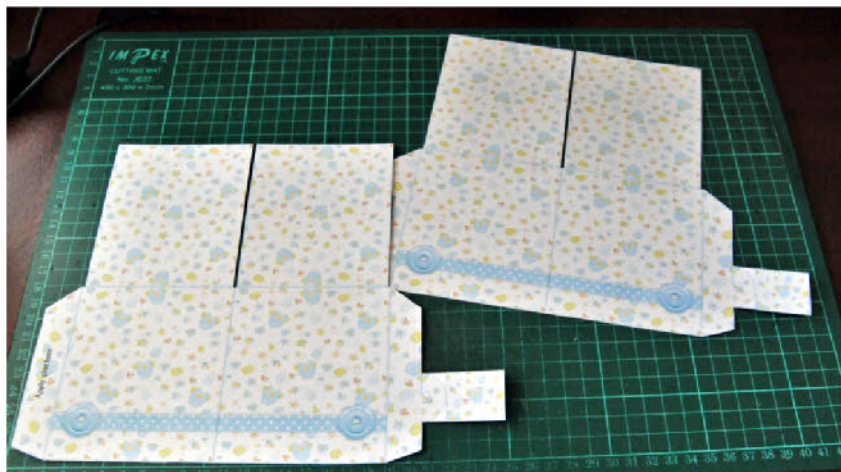


# POPPIN' BOX CARD PHOTOGRAPHIC TUTORIAL

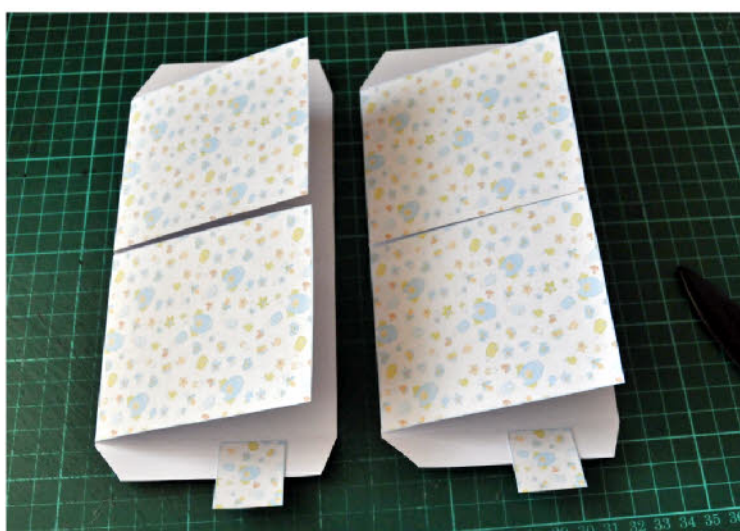
BY BERYL WINGATE

STEP BY STEP INSTRUCTIONS  
FOR MAKING THESE FUN CARDS

Print the card element sheets onto a good quality cardstock, I would recommend a weight of no less than 200gsm . Print the envelope elements onto a heavy weight paper or light weight cardstock. You will need a rubber band measuring approx 7/8 cm across why relaxed.



Start by carefully cutting out the outlines of the box sides and liner elements,



Score & M fold all inner lines and the short tab line (this section will form the hook for attaching the rubber band). Apply glue to the back of the side tab and fix this in position to form a double thickness of card for the hook. Do not be tempted to cut the notch or slot for the hook until the glue has completely dried, this will weaken the hook element and it will tear when under stress when the rubber band is stretched. Put these pieces to one side to dry.

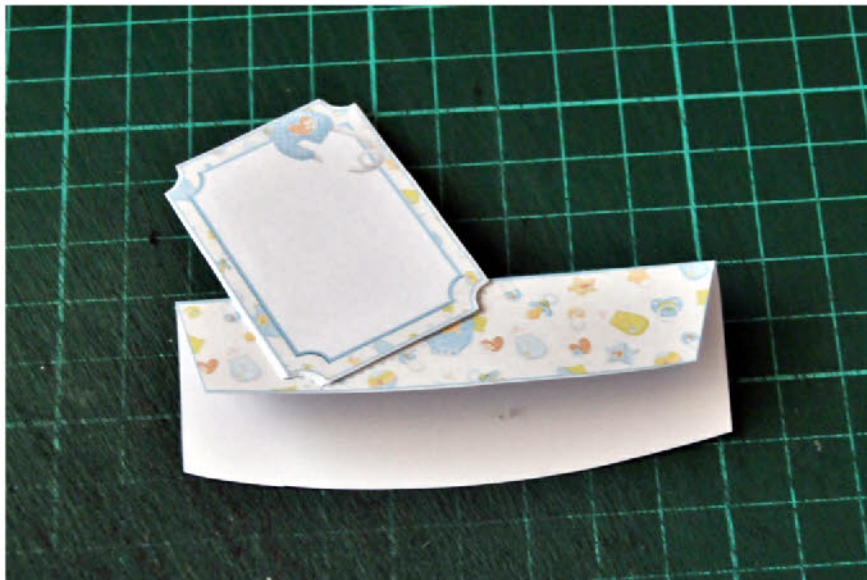


While waiting for the glue to dry cut out the remaining card elements, the front sentiment of your choice and the back sentiment, along with mirror image blank tags which will be glued to the back of these for added strength.





Score & M Fold the tab lines of the four box flaps. Score & V fold the tab lines on elements "A" & "B".. Glue the front and rear facing centre pieces back to back but do not glue the tabs together. Glue the front sentiment of your choice and rear sentiments back to back with their mirror images. Elements "A" & "B" remain as a single layer.



Take the right hand front flap and you will see an area marked with a faint dotted line, apply glue to the marked area and with the blank side of the sentiment of your choice facing fix this in position on the tab of the box flap.

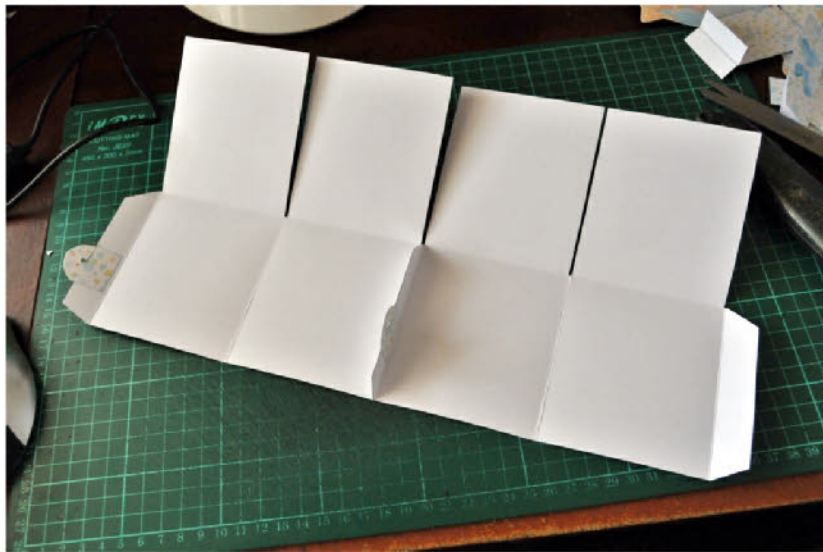


Now go back to the box elements and using a craft knife cut out the triangular shaped notch and the small slot that joins it. Cut around the outline of the semi circle to form the hooks.

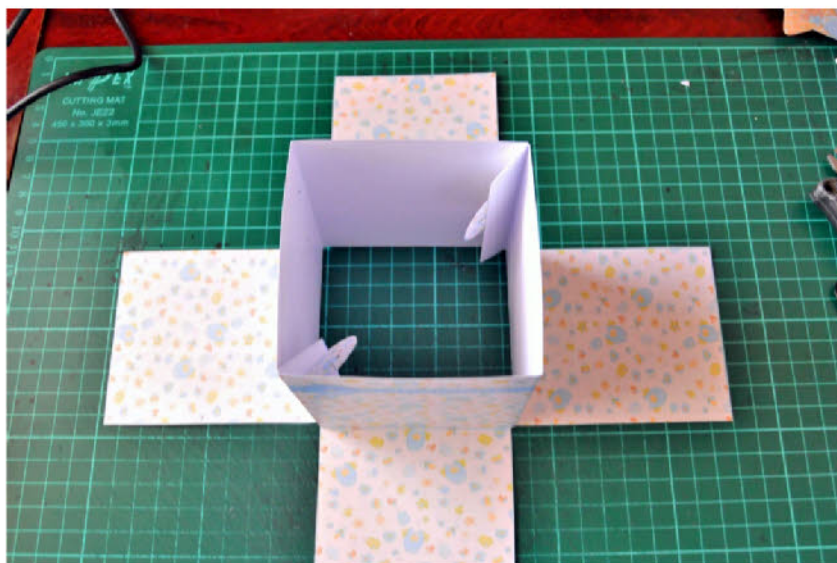




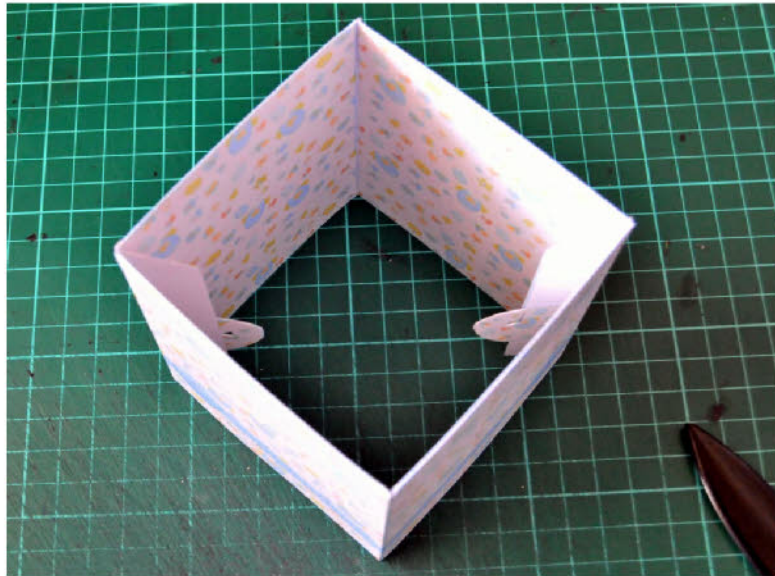
With the long side tabs of the box folded apply glue to the left hand side tab (the one without the hook) and fix this to the hooked tab of the other box section, carefully lining up the side edges. This will create a double thickness hooked tab on the inside of the box.



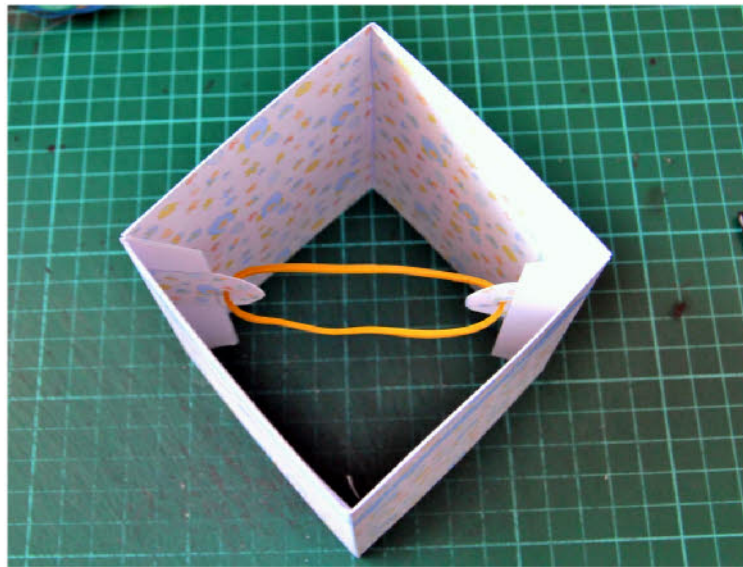
Your piece will look like this on the reverse side



Apply glue to the second tab and join it as before to the other hooked tab. You box will then look like this when viewed from the base



Apply glue to one box side liner at a time and, folding them to the inside, fix in position. Hold the hooked tabs out of the way when doing this.



From the base of the box slip a rubber band through the slots of the hooks until they catch in the notches. Your rubber band should sit in the hooks without distorting the box shape. If your band is a little too long add a couple of twists before attaching the second end of the band to the hook.



Now take the centre piece and apply glue to the back of both tabs





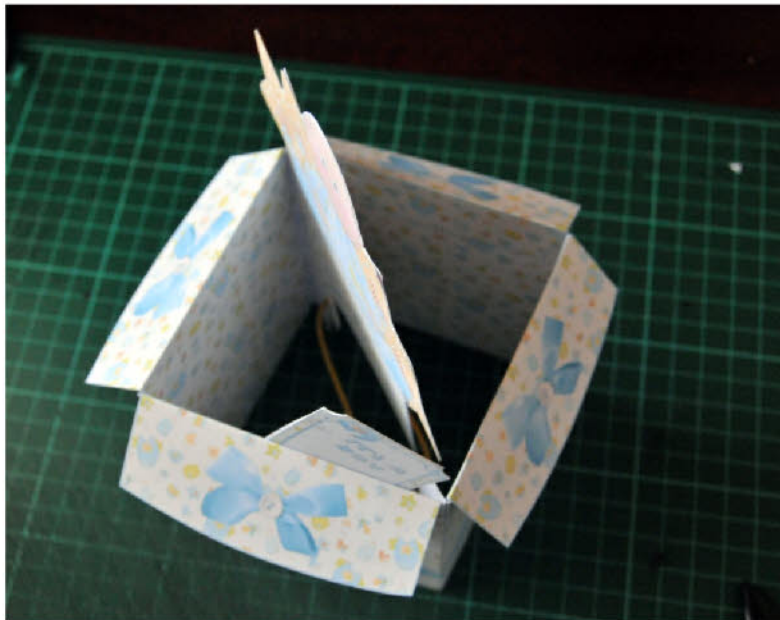
With the tabs to your left, fix the tabs to either side of the hook tab on the inside of the box, ensuring that the marked overhanging edge is clear of the top edge of the box and that the bottom of the tabs sits just above the hook. This will now become the front side of the box. (Tabs of centre piece joined to the left hand tab on the inside of the box)



Apply glue to the back of the tab of the right hand box flap (the one with the front sentiment attached to it)



With the box front facing in a diagonal position, slot it over the top of the right hand section of the box front, glue it into position.



Add the other box flaps.



Push the box flat and with the back of the box facing hold the bottom closed with a paper clip. Pass the back sentiment under the top edge of the box (right side facing) line it up with the front sentiment and make a light pencil mark where it lines up with the top edge of the box. Apply glue to the marked area and fix the back sentiment in place. Remove the paper clip and the box will spring open.



Hold the box closed again with a paper clip and have the front of the box facing. If you look carefully you will notice a faint shaped dotted line on the centre piece. Now take Element "A" and with the tab to your left apply glue to the back of the tab.





Pass the element under the sides of the box and lining the top edges of element "A" up with the faint dotted marks on the centre piece and ensuring that the marked overhanging edge is clear of the top of the box, fix the tab to the inside of the box by applying pressure from the box front. (This does go in at a slight angle) I have specified on the instructions of each individual card exactly where to line the edge of the element up with the mark on the centre piece. Remove the paper clip and the box should spring open without the elements catching. Repeat this on the back of the card with element "B", this time holding the tab of the element to your right.

Apply the decoupage to the front of the box and your card is complete. To keep the card flat for placing in the envelope and posting hold the card with a matching coloured paper clip and thread a thin strip of card through the bottom and glue the ends together or why not use a strip of narrow ribbon. When the recipient pulls on the strip or ribbon and removes the paper clip the card will jump open.