

# Butterfly fold back card instructions

Print the main sheet and butterfly sheet onto photo paper or good quality white card. If the design has a lot of dark colours it will not smudge on white card but it might on photo paper.

1. **Before cutting out** score along lines A and B . It is easier to see them before you cut the main sheet out. Shown in red in fig 1

On some designs the lines are difficult to see once the sheet is cut out. Putting heavy dotted lines on might ruin the design.

Fig 1

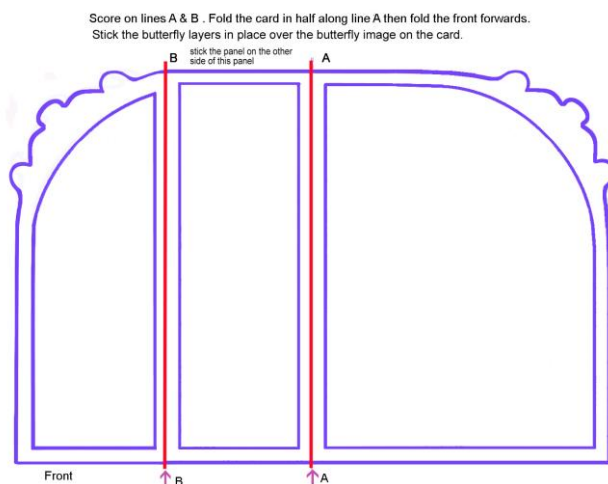
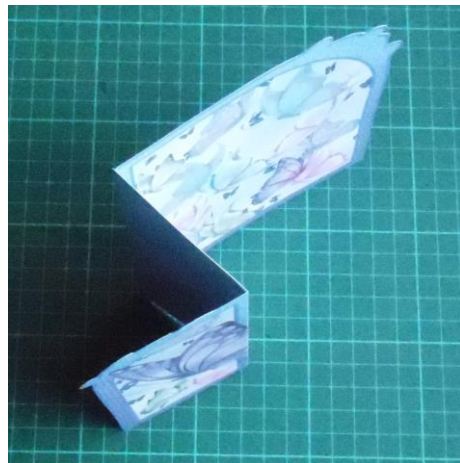


Fig 2



2. Fold the card as in Fig 2
3. Stick the middle back panel in place. See Fig 3
4. Fig 4 shows the card from the front with the biggest butterfly stuck in place over the butterfly on the card front.

Fig 3

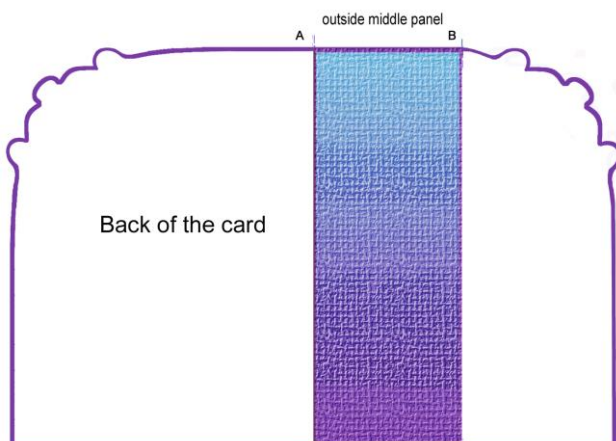
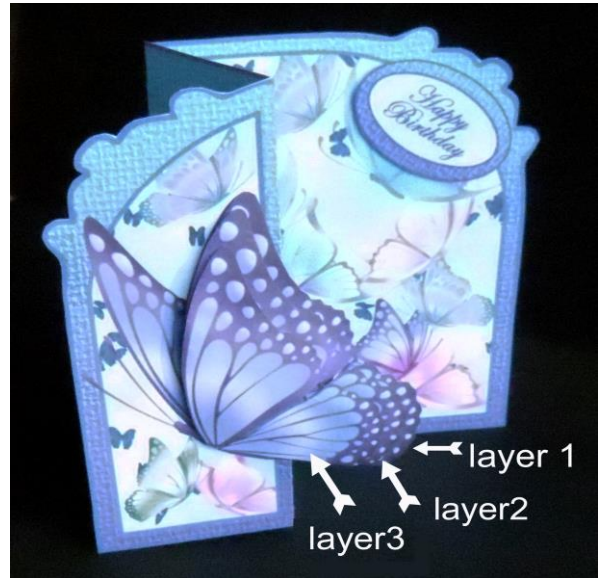
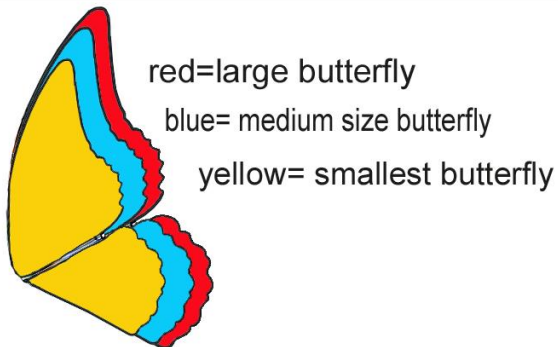


Fig 4



5. Stick on the rest of the butterfly layers. **Please NOTE** they are not decoupage layers so they don't match exactly with the layers underneath. See fig 5 and Fig 6 for more detailed explanation.

Diagram to show how the butterfly layers fit



The design shown here is called 'Butterflies galore' . There are many more on [www.craftsuprint.com/carol-dunne](http://www.craftsuprint.com/carol-dunne) I hope you will enjoy making these as much as I did designing them.