

Very versatile and simple cardfronts/toppers to make up



Print out the sheet onto good quality paper – glossy photo paper or matt photo paper are good choices

Cut out the cardfront/topper, various decoupage layers and the sentiment tags

Layer up the cardfront/topper with as much or as little of the decoupage as you wish using either double sided foam pads or glue dots

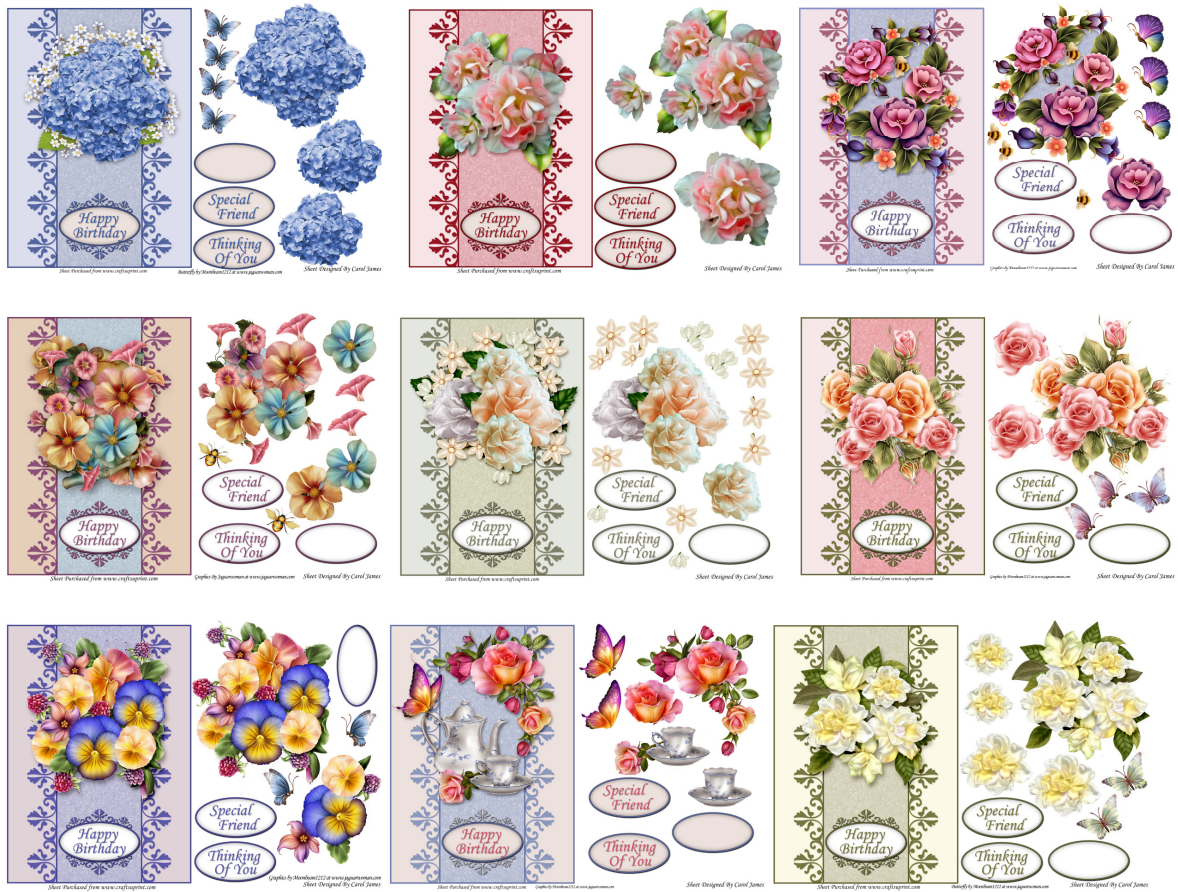
If using a different sentiment tag place yours over the one on the main image

Mount the cardfront/topper to your card of choice using double sided tape, foam pads or glue dots

Add any extra embellishments to further personalise your card

Please check out my other designs at CraftsUPrint.com

<http://www.craftsuprint.com/carol-james/>



Enjoy making up your cards!