

Instructions to make a centre stepper with layered front panels.

1. Print all sheets needed for the card;- front layers, side panels and layers and main sheet for centre stepper.
2. Cut out the pieces for the layered front panel and put sticky foam pads on the back of all pieces EXCEPT the largest piece. (see fig 1 & Fig 2)



Fig 1

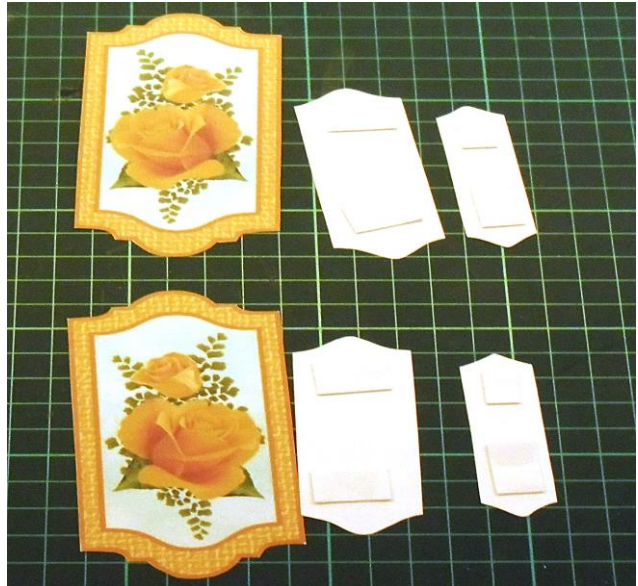


Fig 2



Fig 3



Fig4

3. Place the shapes in layers matching the images underneath, use the sticky foam pads to stick in place. (see fig 3 & fig 4)
Put these to one side while you make the main card.

4. On the main stepper sheet score along the lines A, B, C & D
4. Use a craft knife to cut along lines marked X Y
5. Lines A, B & D are mountain folds, line C is a valley fold.
6. See fig 6 for how it should look after folding.

Fig 5

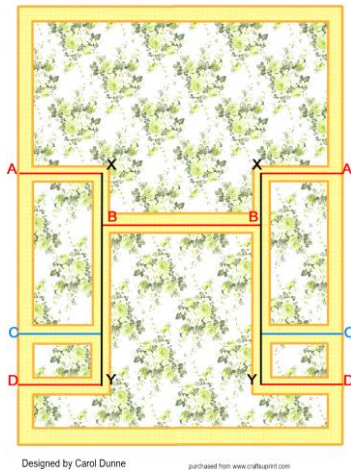


Fig 6



8. Fix the side panels in place using double sided tape or glue (see Fig 7)
9. Fix the centre panel in place using double sided tape or glue (see Fig 8)

Fig 7



Fig 8



10. Fix sentiment label in place.

