

Plate Card Kit Tutorial (Lilac & Pink Roses kit is shown)

Template Design by Sue Douglas, exclusively at

<http://www.craftsuprint.com/sue-douglas/>

These beautiful new Plate Card Kits are very quick and easy to make! Each Kit includes 6 Sheets, and comprises of Plate Front; Plate Back; Plate Stand; Envelope Front; Envelope Back (incl Gift Tag) and Sentiment Labels which won't always need to be printed if the Sentiment you are going to be using is one of the general Sentiment Labels, which are on the other sheets. 20 sentiment Labels are included in the kit which includes a Blank one, to use with your own peel-offs or stamps.

Finished UK Sizes when printed on A4 cardstock:

Plate	6 1/16in (15.3cm) Diameter
Plate Stand	Height 3 3/4in x Width 4 1/8in (9.5cm x 20.6cm)
Envelope	6 5/8in x 6 1/4in (16.8cm x 15.9cm)
Gift Tag	2 7/8in x 2 5/8in (7.4cm x 6.6cm)
Plate Card Assembly Instruction	
Card for your recipient	3 1/8in x 2 1/8in (8cm x 5.4cm)

Materials Required:

Plate and Plate Stand	For best results and vibrant colours, use 3 Sheets A4/Letter Size 250gsm to 270gsm Photo Paper.
Extra Sentiment Labels	This sheet will not need to be printed at all, if you are using one of the general Sentiment Labels, which are on the Plate Front, Plate Back & Plate Stand 1 Sheet of Photo Paper 250gsm to 270gsm
Envelope & Gift Tag	2 Sheets A4/Letter Size 160gsm Smooth White Plain Cardstock
Gift Tag Ribbon	8in (20cm) 3mm wide Satin Ribbon, in a shade that matches the design
Photo Glue or Wet Glue	
Double-sided tape or envelope glue for the Envelope Flap	
3d Sticky Foam Pads, for the Decoupage on the Gift Tag and the Sentiment Label	



Plate Card Kit – Lilac & Pink Roses kit, is used in this tutorial

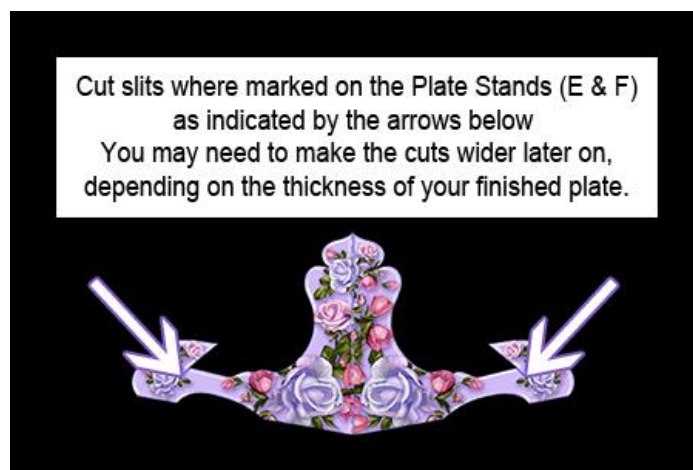
Instructions:

Print

Print out the sheets on the cardstock (details of type, and weights of cardstock are explained in the Materials Required section above) N.B. You only need to print out the full Label Sentiments (C) sheet, if the label you require, isn't on the other sheets. The other sheets which contain sentiment labels are general sentiments, whereas the full sheet of Label Sentiments is mostly sentiments for family members.

Cut

Cut out all the pieces on the printed sheets. Mark the topmost scallop on the wrong side of the Plate Front (A) and the Plate Back (B). Make sure that you have cut the slits in the stands marked by the arrows shown below, to aid assembly later on. The slits may need to be widened depending on the thickness of the finished plate, it does need to be a tight fit though, so just cut slits into the stands initially (2 on each stand piece) where marked, but you may need to make the slit wider later on, depending on the thickness, of your finished plate.





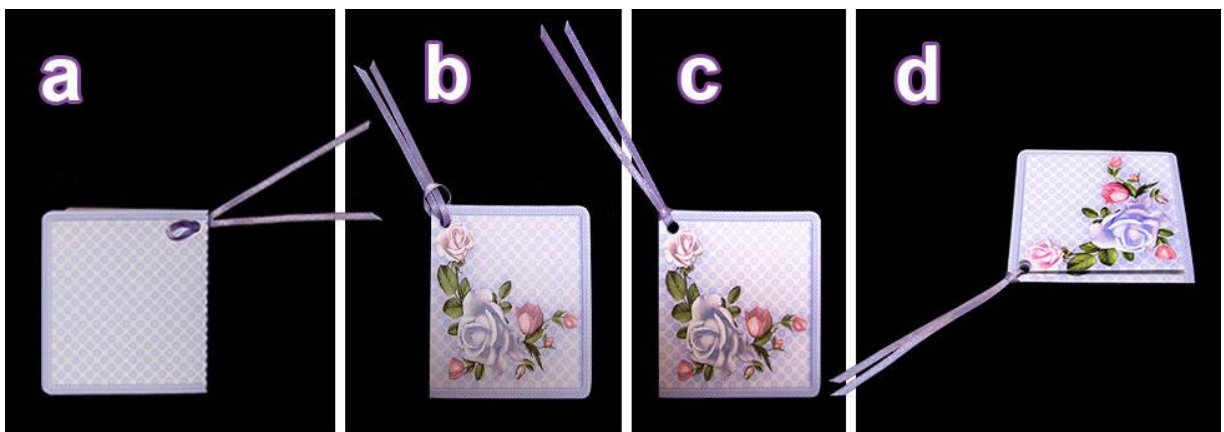
Score and Fold

Score and fold along the dotted lines on the following pieces:

Front Stand (E)	Valley fold
Back Stand (F)	Mountain fold
Envelope Front (H)	All mountain folds (4 folds)
Gift Tag (L)	Mountain fold



Gift Tag instructions

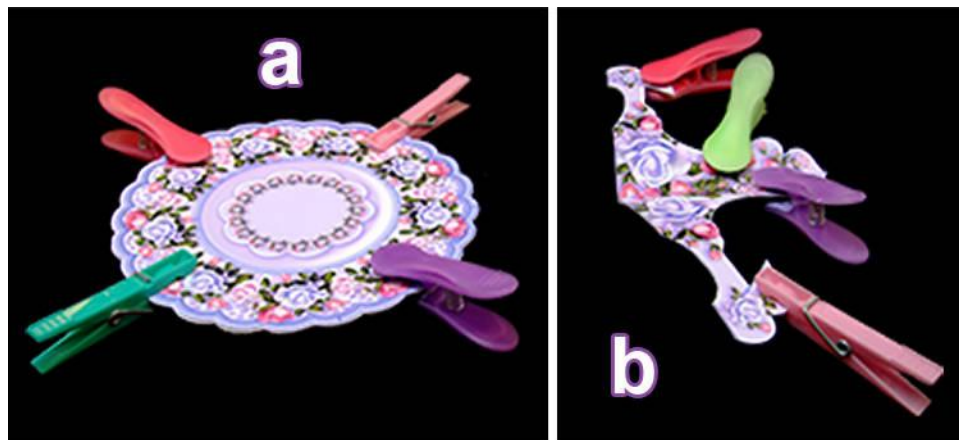


With the Gift Tag (L) folded in half, punch the hole where marked.

Fold an 8 inch (20cm) length of ribbon, 1/8 inch wide (3mm), in half and thread the folded edge of the ribbon, through the hole from the front of the Gift tag, forming a small loop (see a above). Thread the loose ends of the ribbon through the loop (see b above), and pull tight (see c above). Cut the ends of the ribbon to the desired length.

Apply the Gift Tag Decoupage (M), with 3d Foam Pads (see d above)

Plate and Plate Stand Assembly



Attach the Back Plate (B), to the Front Plate (A), wrong sides together, matching up the TOP scallops on both pieces marked earlier, using wet glue. Peg into place while the glue dries (see a above).

Using a wet glue attach the Front Stand (E) to the Back Stand (F), wrong sides together. Peg into place (see b above). When the glue is dry, reinforce the stand fold, by burnishing along the fold, with a bone folder. TOP TIP: The best way to burnish a fold, if you are using Photo Paper, is to press along the fold with your bone folder, rather than dragging it, which tends to damage the photo paper coating. (N.B. The stand will only fit into the envelope when it's folded flat in half).

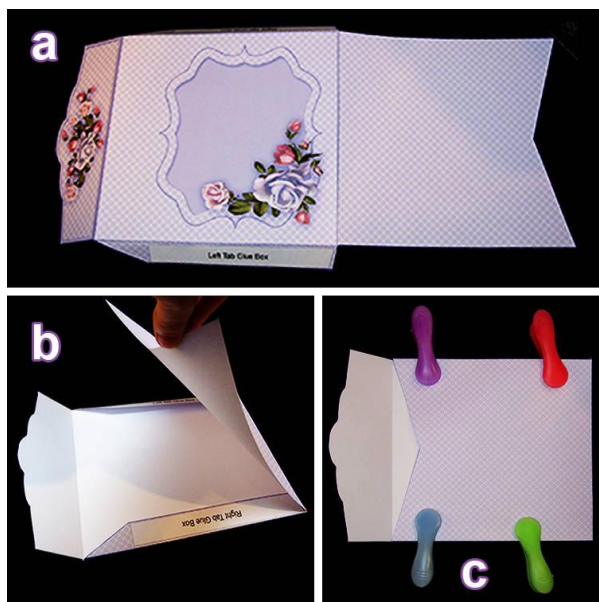


Choose a Sentiment Label (C), or alternatively, use the Blank Label (C) with your own peel-offs or stamps. It is important when you are applying the Label (C), to the Front Plate (A), that the placement marks, on the Front Plate (A), (and the four scallops between them), are at the bottom most part, of the plate (see left for positioning), so that the Assembly Instructions (G), can be fully understood by your recipient!

Use 3d Foam Pads to attach the Sentiment Label (C)

If you are using Photo Paper for the Plate Card, you will need to add the Insert Plate (N), which will have been printed on to smooth white card, to the back side of your plate with wet glue. This Insert Plate (N) is provided, because it's really difficult to write your own greetings, directly on to the Back Plate, if you have printed the Plate pieces on to Photo Paper!

Envelope Instructions

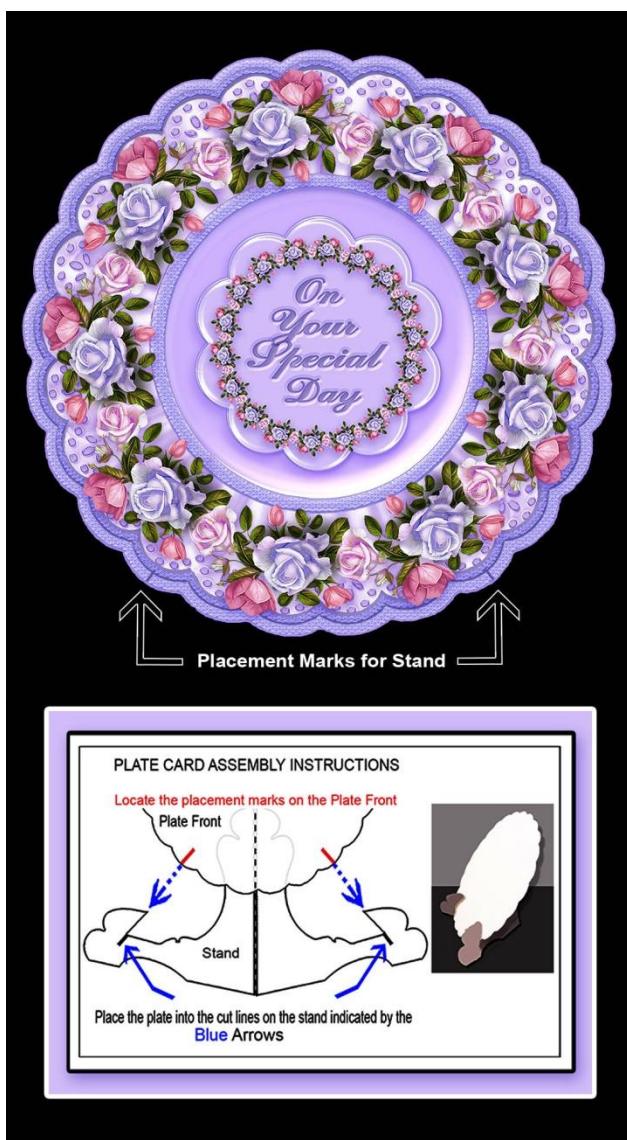


Apply Glue to the Bottom Tab Glue Box on the Envelope Front (H), and attach the Envelope Back (J) bottom edge, on top of the Envelope Front (H) (see a, left)

Apply glue to the two remaining glue boxes (marked Left Tab Glue Box and Right Tab Glue Box) on the envelope Front (H) and bring the Envelope Back over the glue tabs (see b, left).

Peg the envelope into place, until dry (see c, left)

Place the Plate on to the Plate Stand

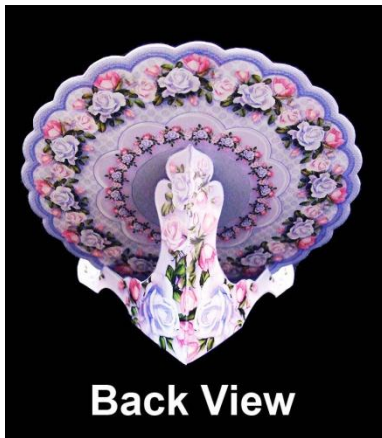


Assemble your finished Plate on its stand. This is where you may need to widen the cut lines on the stand. For best results though, it needs to be a tight fit, so be careful that you make the slits just wide enough, so that the plate thickness can be inserted into the plate stand slits.

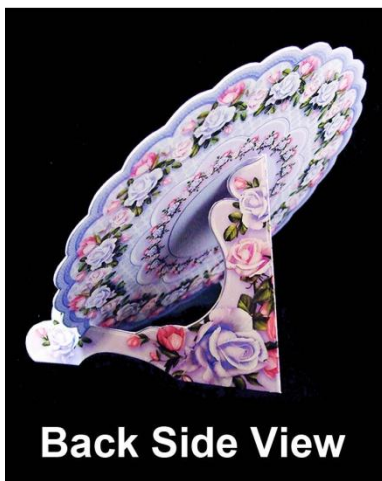
The Plate Card Assembly Instructions (G) (see left) serves a double purpose, as not only can this diagram be used by yourself, when you are making the card, but it may also be placed into the envelope with your Plate Card and Stand, so that your recipient can assemble the plate on the stand, giving optimum display results!

That's it, all finished! I'm sure you will agree, it was very quick and easy to make!

Final Views



Back View



Back Side View



Side View



If you are pleased with your end results, please take a look at all the designs available in my Plate Card Kit Collection below, by clicking on the Plate Card pictures, or the links below them, and you will be taken to my [Crafts U Print Store](#) to see all the products available in my [Plate Card Kit Collection](#)

Plate Card Template ©2012 Sue Douglas

<http://www.craftsuprint.com/sue-douglas/>

Also please see below the Plate Card Kits, for my other collections that you may like to purchase, which are available exclusively from **CraftsUPrint**
Please click on the links below each of the collection previews, and you will be taken to the relevant areas in my store.

To see all the designs available in my store click on the following link:

[Sue Douglas - Crafts U Print Store](#)



[Plate Card Kits](#)



Plate Card Kits



Plate Card Kits



Plate Card Kits



Plate Card Kits

A few of my other design collections follow, which are available exclusively from my store at

[CraftsUPrint](http://www.craftsuprint.com/sue-douglas/)

<http://www.craftsuprint.com/sue-douglas/>

Please click on the link below the previews, and you will be taken to the relevant area, for each collection, in my store.



[Stationery Gift Sets](#)



[Acetate Window Card Kits](#)



[8in x 8in Easel Card Kits](#)



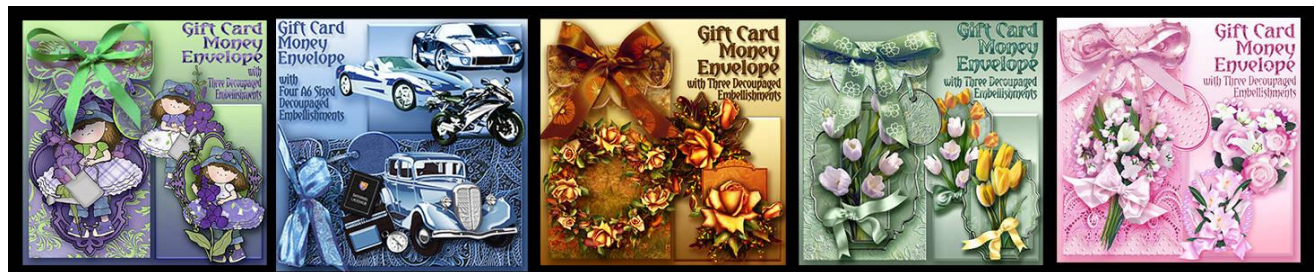
[Gift Card Money Envelope Kits](#)



[Gift Card Money Envelope Kits](#)



[Gift Card Money Envelope Kits](#)



[Gift Card Money Envelope Kits](#)



3d Card Twin Table Kits



Designer Resources

My Designer Resources are licensed to use as Commercial Use for Commercial Use (CU4CU), and can be used in your own graphics programs that can import files in .png format, such as Serif Craft Artist Professional / Serif Craft Artist 2 Professional, which I know is popular with UK Crafters at the moment. My Designer Resource files can be used in exactly the same way as you would use the Serif DigiKits within Craft Artist Professional / Craft Artist 2 Professional.



Designer Resources

My designs are only available to purchase, exclusively from [CraftsUPrint](#) Please do not share.

Look out for more new concepts coming soon!

<http://www.craftsuprint.com/sue-douglas/>