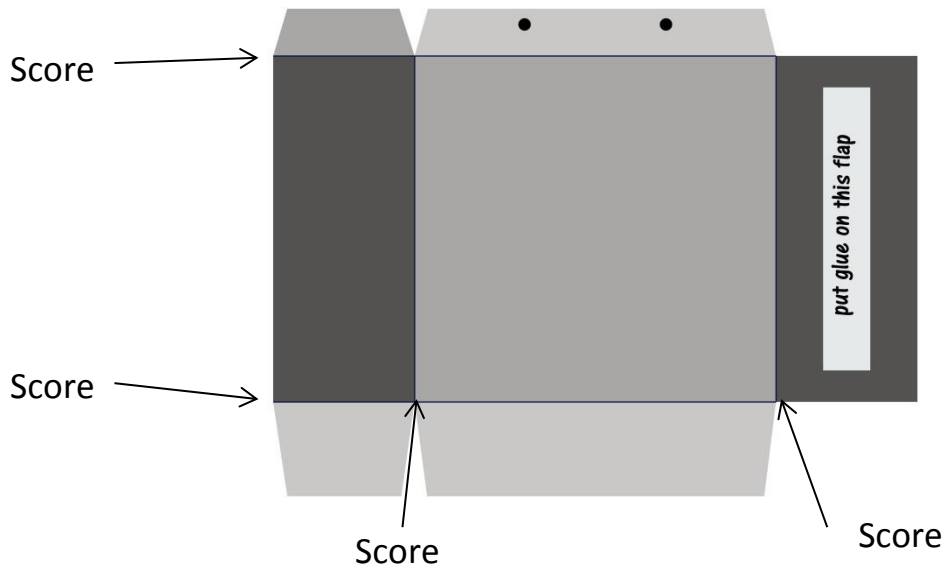


Gift Bag Assembly Directions

You will need glue or double stick tape, scissors, and packing tape to assemble. If you would like to add ribbon handles you will need two pieces of ribbon at least 30cm (about 1 foot) each.

1. Print 2 copies for each box. Heavier paper will give a sturdier box. Just don't exceed your printer's recommendations. Cut out each box panel.
2. Score the edges of the bag, and between the top flaps and bottom flaps.



3. Mountain fold on score lines.
4. Put glue or double stick tape along the glue flap of one section. Glue the 2 sections together. Put glue on the other glue flap and finish sticking the two pieces together to make the box shape.
5. Fold in the top flaps and fix with glue or double stick tape.
6. Fold in the small bottom flaps. Put glue or DS tape on the edge of the small flaps and fold in one long edge. Add glue or DS tape to the edge of the other long flap and fold in. The bottom should look like this.



7. For added strength you can put a strip of clear wide packing tape across the bottom.
8. If desired, punch small holes at the dots on the inside top. Thread ribbon through from the front and tie a double knot on each end to hold, adjusting the length as desired. If you're ribbon is narrow and likely to pull through the holes, tie the two ends together instead.
9. Embellish as desired.
10. If you want small favor boxes, you can resize them using your printer options, by opening them in a graphic arts program, or inserting them in a word processor such as MS Word.