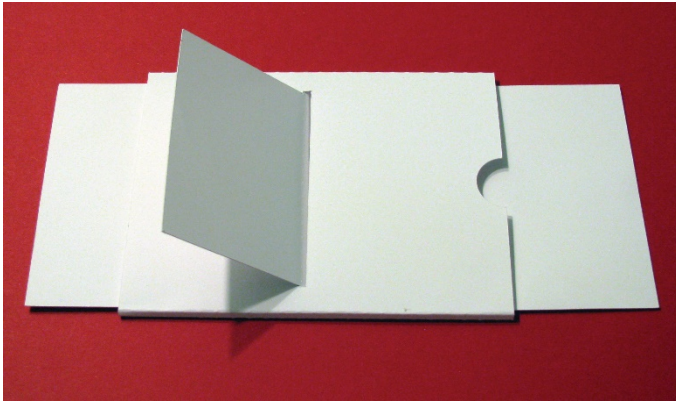
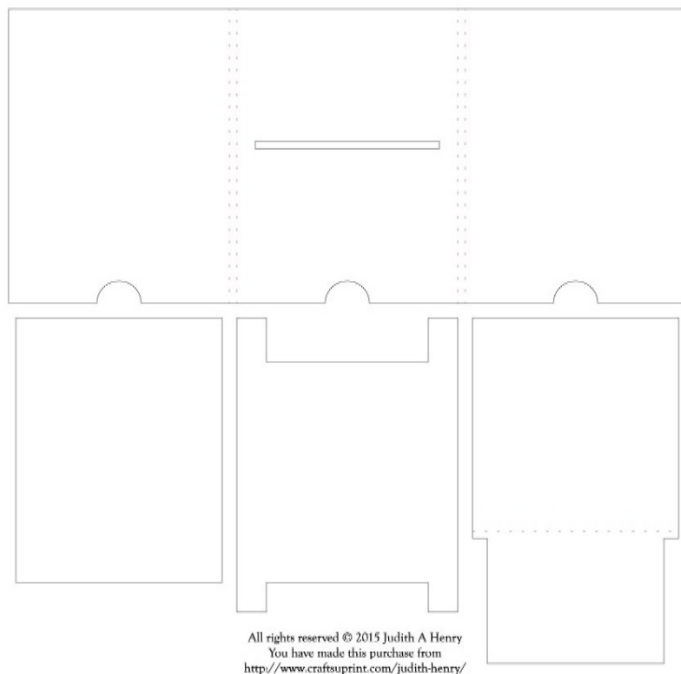


Double Slider Card Assembly Instructions



The zip file contains the photo of the completed project along with cutting files. The design was created with Adobe Illustrator and saved as an SVG file. The file has been opened in Silhouette studio and saved for your convenience. The sample card was created using Silhouette studio.

Program	Format	Imports/Opens	Machines
Funtime Scrapbooking	WPC	SVG ,DXF,AI,EPS,PDF,PLT,DPF	Silhouette SD & Cameo, Black Cat, Craftmate, Craft Robo & Pro, KNK Creative Cutter, Fun Cut, Sign Max, ScrapSavvy
Funtimes	WPC	SVG ,DXF,AI,EPS,PDF, PLT, DPF	Bosskut Gazelle ONLYGazelle Edition
Sure Cuts A Lot	SCAL	SVG , PDF, AI, EPS, WPC, GSD	(early versions with Cricut) Silhouette SD & Cameo, eCraft, Blackcat, Gazelle, Pazzles Inspiration, US Cutter
Make The Cut	MTC	GSD,WPC, SVG , AI, EPS, PDF, PS, SCUT2	(early versions with Cricut) Silhouette SD & Cameo, eCraft, Blackcat, Gazelle, Pazzles Inspiration, KNK, US Cutter
RoboMaster & Wishblade	GSD	DXF	Craft Robo, Wishblade
Silhouette Studio Designer Edition	STUDIO	GSD, GST, DXF , SVG	Silhouette Machines
Silhouette Studio	STUDIO	DXF , GST, GSD	Silhouette Machines
Canvas (online)	FCM	FCM, SVG	Brother ScanNCut

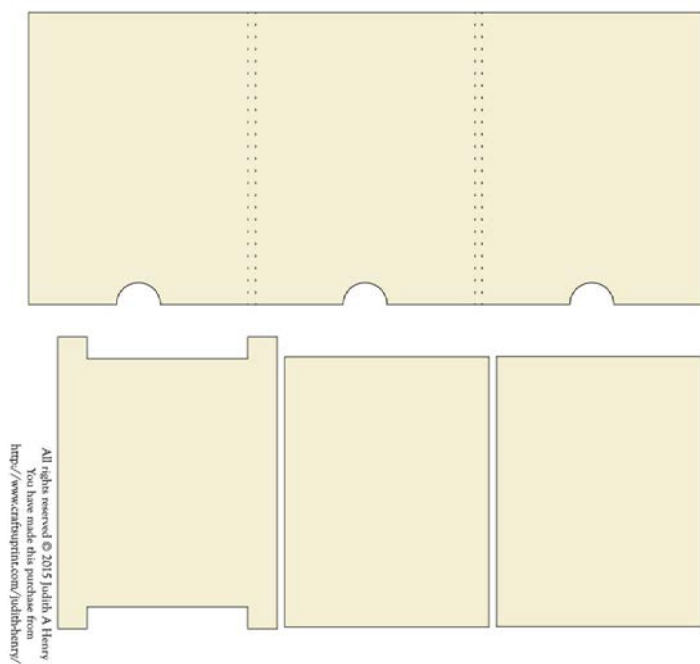


The magic double slider template was designed as a 3.75 x 5 card. It fits into an A2 envelop. Scalability is possible within the confine of your machine. Use cover stock or heavy weight cardstock to make the base of the card. All pieces can be cut from a 12 x 12 inch sheet.

There are four pieces. The outer shell, pull tab, central slider and the push tab (top left to right).

The top layout has a slit in the outer shell to allow a third popup slider. The second layout in the typical double slider template. In both cases the central slider piece will have a piece of plastic bag wrapped around it which causes the push tab to appear when pulling the pull tab.

To assemble, cut all pieces out of the desired cover stock or heavy cardstock. Note that only the central slider is not visible in the final product. Using different patterned cardstock on the other pieces will add interest. The design has been improved with the double fold line to allow layers or sentiments to be glued on the pull and push tabs.





There are several very good double slider tutorials on YouTube. This template is a little different but the slider portion is explained very well. The following has my pictures for this style of the double slider template.

Start by selecting a good quality plastic shopping bag. Cut the bottom and side so there is a large sheet. Try to square up a section so you can cut a strip that is narrower than notches and a little longer than twice the length between the notches. This piece is wrapped around the notched ends and glued together. I use double sided adhesive and then trim any excess plastic. Make sure that there is no adhesive exposed.



Make sure the plastic wrap slides easily. I like to dust the central slider with baby powder to enhance the slide. If there is a problem with the piece sliding at least 2 inches try stretching the plastic. You should be able to place two fingers under the wrap.

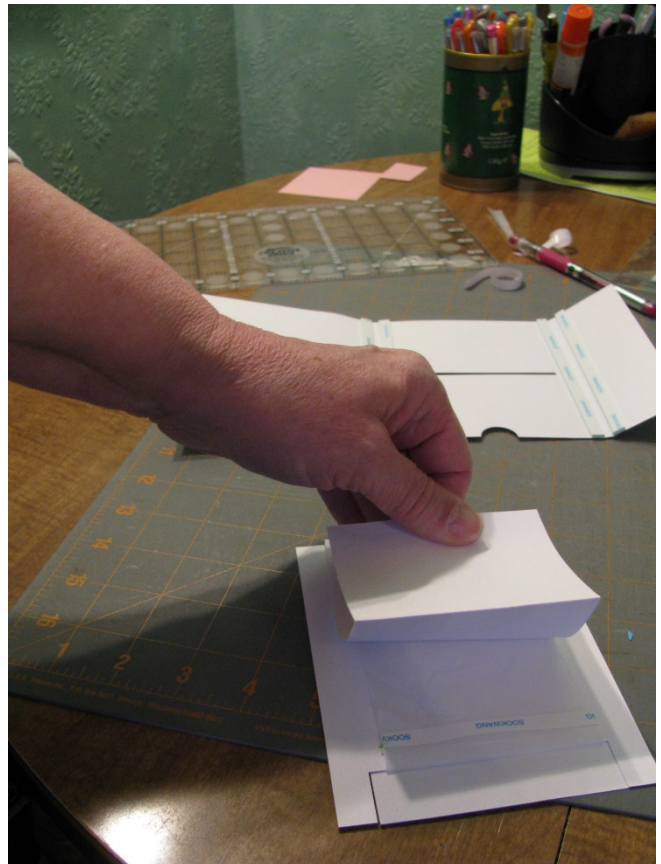
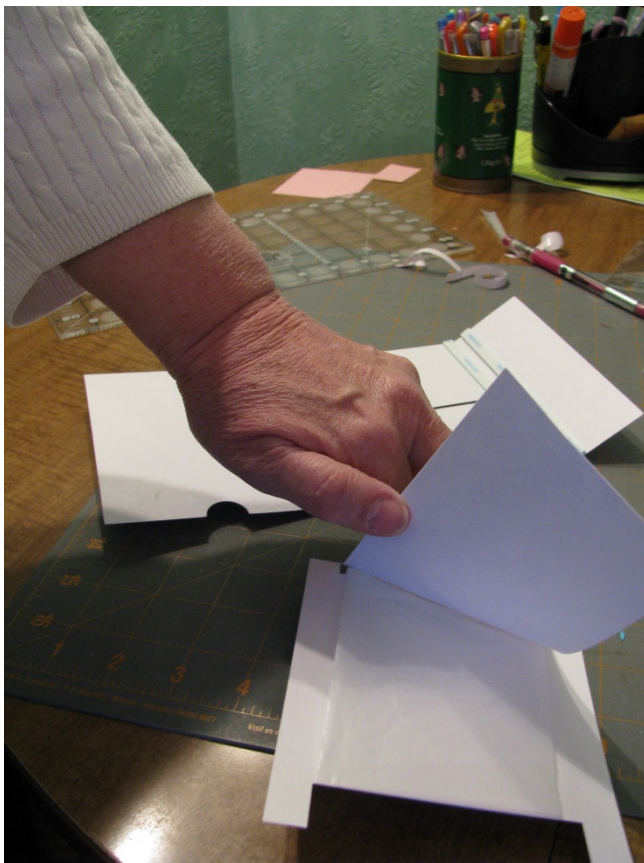




Now it is time to add the two tab pieces to the plastic wrap. Put the seam to the top of one of the notches. Add adhesive tape to the plastic wrapper along the edge of one notch. Flip the piece to the opposite side and add adhesive to the edge of the opposite notch. Add a tab to each side in this manner: The pull tab is glued to the short notched edge and should extend past the large notch. The push tab is folded at the dotted line. Attach the fold edge with the smaller push tab on top to the opposite side. This is the larger notch. On the double slider the notches are the same.

The hard part is now completed!!

Fold the outer shell on the dotted lines. This will make an envelope. The central slider is attached to the outer shell by the small tabs that make the notches. Put adhesive on the sides where the pull/push tab do not cover them.



Attach the double push tab side first. Put the folded tab through the slot. Adjust the slot if necessary so it works correctly when pulling the bottom tab.



Fold over the two outer shell back pieces and glue them together. The other central slider tabs will attach to the back piece.

The fun part begins. Embellish the outer shell. Hide the popup card. Add a sentiment. Put a ribbon on the pull tab.

I would love to see your creations. Capture my star and please submit your creation for inclusion on the CraftsUPrint.com.

<http://www.craftsuprint.com/judith-henry/>

Thank you for purchasing this card.

Judith Henry

