

## Tutorial for [Triangular Base – Card Kit](#)

The first three pages in this tutorial relate specifically to the Shabby Chic designs, in my Triangular Base collection

Template Design by Sue Douglas, exclusively at  
<http://www.craftsuprint.com/sue-douglas/>

**N.B. In the Shabby Chic Collection, there are 9 Pages in the kit, but you will only need to print 7 sheets in total, to make the Triangular Base Card, the matching Envelope and the Gift Tag. The instructions on the first 3 pages relate specifically to my Triangular Base – Shabby Chic Decoupage Collection and will explain which ONE of the three sheets you will need to print depending on the project you are making.**

I wanted to design a collection like this, so that card makers could make a card that appears to have lots of embellishments, (which are really popular at the moment), without the expense of having to buy all those expensive physical embellishments! I think this busy style, originated in Holland, where card making is very popular, and this style of card is now becoming very popular all over the world. My Shabby Chic Triangular Base kits, are ideal to use with your own stamps/images (Option 3), but I also provide a ready coloured Digistamp in each Shabby Chic kit (Option 2), if you want to imitate the look of a coloured stamp without having to do all the work, or if stamping or colouring, isn't something you are in to at this time in your crafting journey! Alternatively, you can make up the card without having anything in the frame (Option 1), if you prefer. The design has been created so that all options look good!

The tutorial that follows these first three pages is for my Triangular Base Collection, and my Shabby Chic collection in this range uses exactly the same template, and is made up in exactly the same way, it's just the Decoupage Frame piece labelled D2, which requires some assembly, prior to layering it up in Option 3. If you choose Option 1 or Option 2 then the instructions are exactly the same as my Triangular Base Cards, (that tutorial follows), but explanations on how to decide which ONE of these three sheets you need to print. The one you choose will depend on the type of project you have chosen to make.

**The three sheets, where you will only need to print ONE of them, are named:**

- Triangular Base Shabby Chic - (*design name*) - **Option 1** - Empty Frame
- Triangular Base Shabby Chic - (*design name*) - **Option 2** - Digistamp
- Triangular Base Shabby Chic - (*design name*) - **Option 3** - Use Your Own Image

### **Option 1 - Empty Frame sheet**

If you choose this option, Decoupage piece D2 will NOT need to have anything done to it prior to assembling. Choose this option if you want an Empty Frame, which looks perfectly OK as is (please see the preview below). Alternatively, you could add your own peel off lettering in the frame, once the card is assembled.

### **Option 2 – Digistamp sheet**

If you choose this option, Decoupage piece D2 will NOT need to have anything done to it prior to assembling. With this option you can use the Frame with the ready coloured Digistamp, provided as an optional part of the kit.

### Option 3 – Use Your Own Image sheet

This option can be used with your own stamped (or digistamp) and coloured image or an image of your own choosing. It can also be used with transparent peel-off verses. (The only company I have seen who supply transparent peel-off verses is (Pinflair in the UK). Alternatively, you can print out a verse on to a coloured paper that coordinates with the design and place that behind the frame (D2).

**Check that your chosen stamp, digistamp, image, printed verse or peel-off verse will fit within the opening of the frame (D2)**

Instructions for your own Stamped Image / Digistamp Image / Digital Image / Other Image / Transparent Peel-off Verse / Printed Verse

#### Stamp

Stamp your image on to the paper that you use for your stamping projects. Colour the image using your chosen medium (optional). Cut out the image and using a wet glue, place it on to the Frame Backing (D2A), in the area indicated by the darker colour. N.B. Before placing the image on to the Frame Backing (D2A), just lay the Frame Decoupage over the top making sure that parts of your image are not obscured, by any other embellishments on the Frame Decoupage (D2). Apply wet glue to the wrong side of the Frame Decoupage (D2), and attach it on top of the Frame Backing (D2A). This assembled decoupage layer, will now be referred to as D2 in the rest of the tutorial.

#### Digistamp

Print your digistamp on to the paper that you use for your digi stamping projects. Colour the image using your chosen medium (that is, if you are choosing to colour it!). Cut out the image and using a wet glue, place it on to the Frame Backing (D2A), in the area indicated by the darker colour. N.B. Before placing the image on to the Frame Backing (D2A), just lay the Frame Decoupage (D2) over the top, making sure that parts of your image are not obscured, by any other embellishments on the Frame Decoupage (D2). Apply wet glue to the wrong side of the Frame Decoupage (D2), and attach it on top of the Frame Backing (D2A). This assembled decoupage layer, will now be referred to as D2 in the rest of the tutorial.

#### Digital Image / Other Image

Print your image (obviously you can also use any ready printed image, from the paper kits that you may have in your stash). Cut out the image and using a wet glue, place it on to the Frame Backing (D2A), in the area indicated by the darker colour. N.B. Before placing the image on to the Frame Backing (D2A), just lay the Frame Decoupage (D2) over the top, making sure that parts of your image are not obscured, by any other embellishments on the Frame Decoupage (D2). Apply wet glue to the wrong side of the Frame Decoupage (D2), and attach it on top of the Frame Backing (D2A). This assembled decoupage layer, will now be referred to as D2 in the rest of the tutorial.

#### Transparent Peel-off Verse

Peel the backing off the Transparent Verse and place it on to the Frame Backing (D2A), in the area indicated by the darker colour. N.B. Before placing the Transparent Peel-off Verse, on to the Frame Backing (D2A), just lay the Frame Decoupage (D2) over the top, making sure that parts of your verse are not obscured, by any other embellishments on the Frame Decoupage (D2). Apply wet glue to the wrong side of the Frame Decoupage (D2), and attach it on top of the Frame Backing (D2A). This assembled decoupage layer, will now be referred to as D2 in the rest of the tutorial.

#### Printed Verse

Print out your verse on to a sheet of coloured paper, that co-ordinates with the design. N.B. The Frame Backing (D2A) will NOT be required for the Printed Verse, Place the Frame Decoupage (D2) over the top of the verse and lightly pencil around the aperture and the outside of the frame on to the verse paper, making sure that parts of your verse are not obscured, by any other embellishments on the Frame Decoupage (D2). Cut out the verse (it's best if you cut 1/8" (2mm) inside the pencil line around the outer frame edge so that when it's attached to the Frame Decoupage (D2) there's no chance of it showing. Attach the Frame Decoupage (D2) on top, **with 3d Foam Pads** (I have recommended 3d Foam Pads in this case, rather than wet glue (which is what I've recommended for all the other image instructions above), because you are not using the Frame Backing (D2A) which has shading around the aperture as part of the design, so because

essentially the Printed Verse is replacing that piece, it will look better to get that shadow by raising up the Frame Decoupage (D2) by using 3d Foam Pads).

This assembled decoupage layer, will now be referred to as D2, in the rest of the tutorial.

**This assembled decoupage layer, will now be referred to as D2, in the rest of the tutorial.**

**3d Triangular Base Kit - Shabby Chic Collection**

Frame Option 1  
Empty  
Frame  
Decoupage

Frame Option 2  
Frame  
Decoupage  
includes a  
Coloured  
Digistamp  
Image

Frame Option 3 - Frame provided to use  
with your own stamp or printed image

Folds  
Flat  
for  
Posting

TRIANGULAR BASE CARD

**Blue Paper Roses**

MATCHING  
ENVELOPE

MATCHING  
GIFT TAG

A COLLECTION OF  
BEAUTIFUL SHABBY  
CHIC DECOUPAGE  
DESIGNS WITH  
3 OPTIONS OF FRAME  
TO CHOOSE FROM

Unregistered Design Rights owned by Sue Douglas

9 page kit (only 7 pages are printed as there are 3 sheets for you to choose from, depending on which of the 3 options of frame decoupage, you have chosen to use in your project) Includes: Triangular Base Card; Matching Envelope; Matching Gift Tag; Decoupage; 3 Frame Decoupage options and a large choice of Sentiments

Exclusive Design Purchased from [www.CraftsUPrint.com/sue-douglas/](http://www.CraftsUPrint.com/sue-douglas/)

### [Triangular Base – Shabby Chic Collection](#)

Preview above shows the **Blue Paper Roses** design

**Now follow the rest of the tutorial for the Triangular Base Card Kit, below**

## Tutorial for [Triangular Base Card Kit](#) (Roses and Butterflies design is shown in this tutorial)

Template Design by Sue Douglas, exclusively at  
<http://www.craftsuprint.com/sue-douglas/>

These [Triangular Base Card Kit](#) designs are quick and easy to make, and the card folds flat for posting.

Included in each kit:

**Triangular Base Card**

**A wide choice of sentiments for the Card Front**

**Large Gift Tag**

**Envelope**

**UK Finished Sizes when printing to *actual size* (see paragraph below on printing actual size):**

Triangular Base Card	Height at tallest point	- 7 11/16in (19.6 cm)
	Width at widest point	- 6 1/2in (16.4 cm)
	Depth at Base	- 2 5/8in (6.6cm)

Gift Tag	Height	5in (12.7cm)
	Width	2 5/8in (6.7 cm)

Envelope (Flap not included)	Height	8 3/4 (22.2 cm)
---------------------------------	--------	-----------------

If your finished sizes are larger than the measurements above, the most likely cause, will be, that you are printing to media size (e.g. A4 size or Letter Size), rather than printing the sheets at actual size. Please see the notes at the end of this document, where I explain how you get your printer to print at **actual size**. N.B. You don't have to change the settings on the physical Printer, but when you send a document to your printer to print, it's the settings on the options box that appears on your PC screen that need to be set, to correctly print at actual size.

*Materials Required:*

**Triangular Base Card and Gift Tag**

4 sheets A4/Letter size of Photo Paper (160 - 200gsm)  
2 sheets of plain cardstock, that co-ordinates with the design (160 to 200gsm)

**Envelope**

2 sheets of A4/Letter size cardstock (120 to 160gsm)

**N.B. This tutorial shows the photo paper being applied to a cardstock backing, to make the finished card sturdier, which will give the optimum results, for this design. However, you could try printing on to a heavier Photo Paper instead, which may remove the need to attach the Photo Paper to cardstock after printing, but I haven't tried it, and you may find that the base is not strong enough, to hold the weight of the card front, especially once the Decoupage layers have been applied.**

Double-sided tape

3d Sticky Foam Pads or Silicon Glue/Glue Gel

8in – 9in (20.3cm – 22.8cm) Double-Sided Satin Ribbon, 15mm wide in a colour that co-ordinates with the design.



# Roses & Butterflies



TRIANGULAR BASE CARD

Folds Flat  
for Posting

A COLLECTION OF  
BEAUTIFUL FRAMED  
FLORAL LANDSCAPES



MATCHING  
ENVELOPE

MATCHING  
GIFT TAG

## 3D TRIANGULAR BASE KIT

*Unregistered Design Rights owned by Sue Douglas*

6 page kit Includes: Triangular Base Card; Matching  
Envelope; Matching Gift Tag and a choice of Sentiments

Exclusive Design Purchased from [www.CraftsUPrint.com/sue-douglas/](http://www.CraftsUPrint.com/sue-douglas/)

[Triangular Base Card Kit – Roses and Butterflies](#)



## Print and Cut

Print on to the Photo Paper and Cardstock recommended above, and cut out all the pieces which are:

A Card Front

B Card Stand

C Card Back Panel *(for your own sentiments/greetings)*

D1 Sentiment Label for Card Front *(a choice of sentiment labels are included in the kit, alternatively use the blank sentiment label (D1) with your own peel-offs or stamps)*

D2 up to Dn Card Front Decoupage *(where n is the total number of Decoupage pieces, for the design you are making)*

E Envelope Front

F Envelope Back

G Envelope Flap

H Gift Tag

H1 to Hn Gift Tag Decoupage

*(where n is the total number of Decoupage pieces, for the design you are making)*

## Score and Fold

Score and Fold along the dotted lines on the following pieces:

B Card Stand *(all mountain folds apart from one which is shown left which is folded first as a mountain fold then folded back the other way to a valley fold)*

E Envelope Front *(all mountain folds)*

G Envelope Flap *(mountain fold)*

Burnish (i.e. press) along the folds with the back of your scissors or bone folder, to reinforce the folds.

KEY:

M = Mountain Fold

V = Valley Fold



M = Mountain Fold

V = Valley Fold

## Cut out and apply backing card to the Photo Paper

*This step shows the photo paper being applied to a cardstock backing, to make the finished card sturdier, which will give optimum results. However, you could try printing on to a heavier Photo Paper instead, which may remove the need to attach the cardstock on to the back of the Photo Paper after printing. I haven't tried it, and you may find that the base is not strong enough to hold the weight of the card front without the added cardstock, especially once the Decoupage has been applied.*

Cut out the backing cardstock (this can be white, or a colour that co-ordinates with the design you are making)

Apply double-sided tape to the back of the Card Front (A) and the Gift Tag (H), and apply on to a piece of cardstock. Cut around the cardstock by cutting around the Card Front (A) and the Gift Tag (H) completely.

To back the Card Stand (B) with the cardstock, you will need to mark and cut 4 sections of cardstock (the smallest glue box doesn't need to be backed with card), because it works much, much better, if you don't cover up the fold lines. Offer the cardstock up against the wrong side of your folded Card Stand (B), and mark where you need to cut each of the four pieces to be backed making sure that mark each piece excluding the fold lines (see Photo 1)

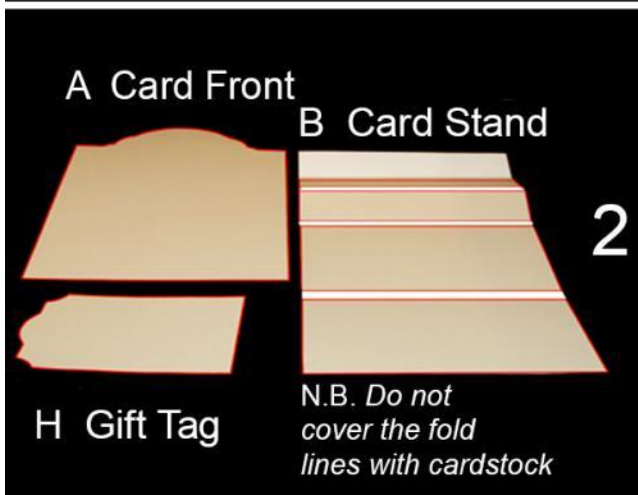
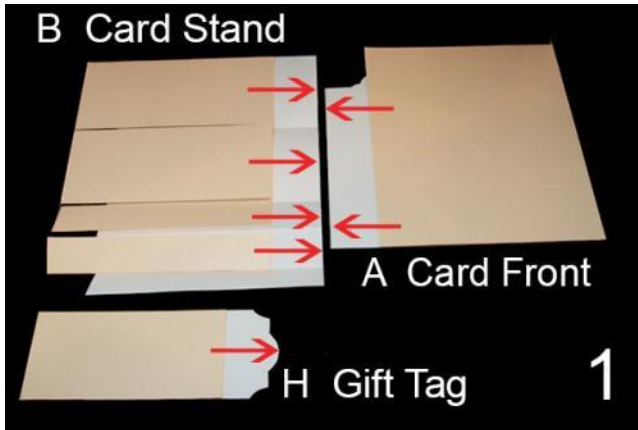
Cut the four pieces of cardstock that you have marked, and apply double-sided tape, to the back and apply to each section, again making sure that the fold lines are not covered. Photo 2, shows the finished results, I have highlighted the edge of each piece of cardstock in **RED**.

## Apply the Decoupage

Choose your Sentiment Label (D1) and apply to the top of the Card Front (A), with 3d Foam Pads.

Apply the Decoupage (D2 to Dn (where n is the total number of Decoupage pieces, for the design you are making)) to the Card Front (A), with 3d Foam Pads or Silicon Glue/Glue Gel

Apply the Decoupage (H1 to Hn (where n is the total number of Decoupage pieces, for the design you are making)) to the Gift Tag (H), with 3d Foam Pads or Silicon Glue/Glue Gel







## Apply Ribbon to the Gift Tag

For this step you will need 8in – 9in (20.3cm – 22.8cm) Double-Sided Satin Ribbon 15mm wide in a colour that co-ordinates with the design, for the Gift Tag (H)

Punch a hole in the top of the Gift Tag where marked.

Fold the ribbon in half, and from the front of the Gift Tag, thread through the folded edge of the ribbon through the hole making a loop, (see Photo 1)

Feed the ribbon ends back through the loop (see Photo 2)



Pull the ends of the ribbon tight (see Photo 3).

The finished result.



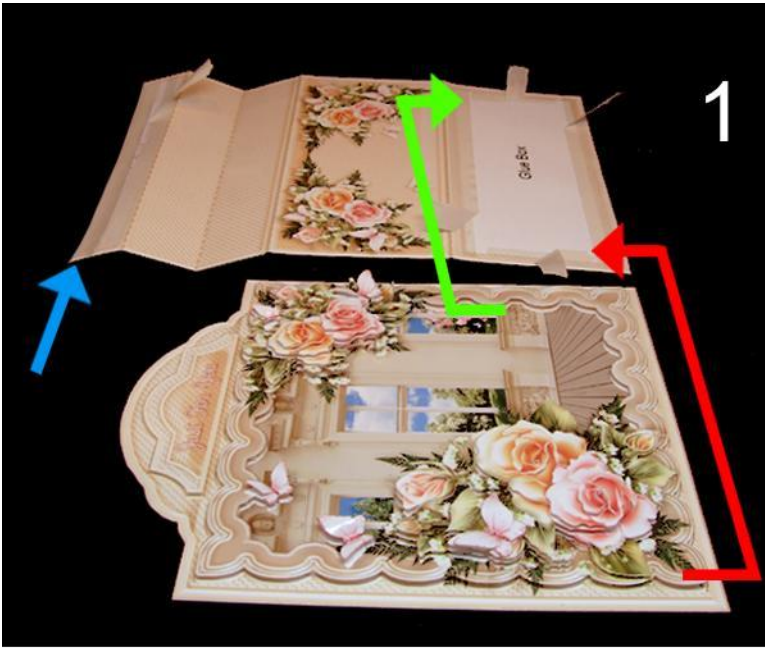
## Apply Card Front to Card Stand

Apply double-sided tape to the two glue boxes on the Card Stand (B) (photo 1)

**Tip:** If you are using a double-sided tape with a carrier tape, if you bend back just the end parts of the carrier tape (See Photo 1), you will be able to place the card front on top and if you don't quite get it, in the correct place, this method will allow you to remove it, and try again. Once you are happy with the position, press down the edges where the carrier has been removed and then carry on and remove the rest of the carrier tape. Obviously you do need to be able to get at the ends you have bent back, once the ends are stuck down, in order to be able to remove the rest of the carrier tape, and that's not always possible. For example, see the blue arrow left, where I have put two strips of tape on the small glue box, this method cannot be used on the piece of tape nearest to the edge, as that end, would end up inside the card stand, and it would be extremely difficult to remove the rest of the carrier tape! So in this case you don't have any option, but to remove the carrier tape completely! So the best option with that piece of tape, is to remove the carrier tape completely and to apply a wet glue (a glue stick is more cost effective for this, rather than using a more expensive wet glue), which will give you a little bit of time for movement, should you need it.

Place the bottom edge of the Card Front (A), to the bottom edge of the large glue box (see photos 1 & 2)

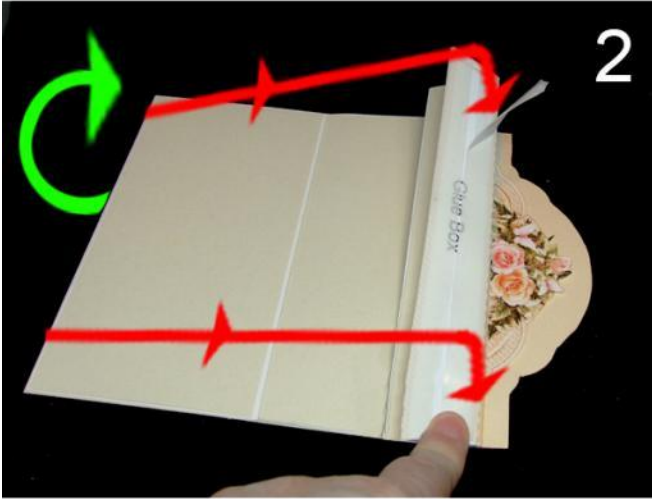
Once you are happy that you have it lined up correctly, press down on the ends where the carrier tape has been removed and then you can remove the rest of the carrier tape (see photo 3 (still shows one end of the carrier tape, to be removed))





### Apply Card Back Panel

Using double-sided tape apply the Card Back panel to the top back of the card front as shown in photo 1 on the left.



### Assemble the Card Stand

Concertina the bottom of the Card Stand (B) as shown in photo 2 on the left (you will need to remove the carrier completely, from the left most strip of double-sided tape, as explained earlier) Bring over the back portion of the stand (indicated by the arrows) so that it is lined up to the right hand fold of the Glue Box (see photo 2 left)

Remove the remaining strip of carrier tape.



The back view of the card front and card stand, is shown in photo 3



The card folds down flat for posting, as shown in photo 4 on the left.





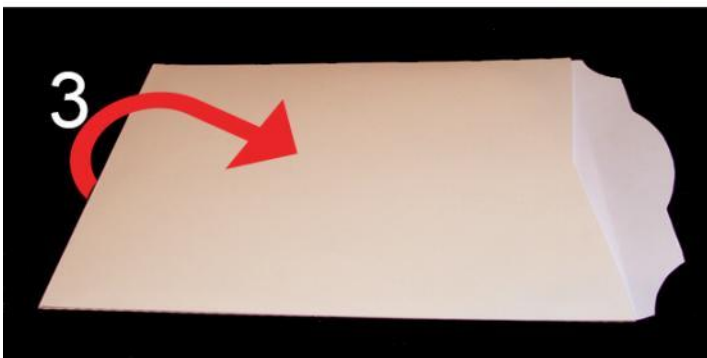
## Assemble the Envelope

Add double-sided tape to all the glue boxes on the Envelope Front (E) and the Envelope Flap (G) as shown on the left in photo 1



Remove the carrier tape from the double sided tape on the bottom glue box on the Envelope Front (E). Apply the straight edge of the Envelope Back (F) on top of the double-sided tape. See Photo 2 left

Remove the carrier tape from the double sided tape on the glue box on the Envelope Flap (G) Attach the Envelope Flap (G) to the underside of the top edge of the Envelope Front (E) See Photo 2 left



Remove the carrier tape from the double sided tape on both of the side glue boxes on the Envelope Front (E).

Turn over the envelope so that the wrong side is facing upwards, with the side glue boxes folded over, towards the centre. Rotate the Envelope Back (F) over the side glue boxes and press down to secure. See photo 3 left.



Apply double-sided tape to the wrong side of the Envelope Flap edge, (leaving the carrier in place), or alternatively, apply a remoistenable envelope glue, to the Envelope Flap edge.

The finished envelope is shown in Photo 4 left

**So that's it, all finished.**





To see other designs in my Triangular Base Card Kit collection, please click on the link below:

[Triangular Base Card Kit Collection](#)

Original Template ©2013 Sue Douglas.

## Roses and Butterflies is the design used in this tutorial

If you are pleased with your Triangular Base Card Kit, please take a look at the other designs available in this collection, below. There may be other designs available, that are not shown below, but just click on the link below the previews and you will be taken to CUP to see the full collection.

Template ©2013 Sue Douglas

<http://www.craftsuprint.com/sue-douglas/>



## [Triangular Base Card Kit – Shabby Chic Collection](#)



## [Triangular Base Card Kit Collection](#)



## Cream Roses

Triangular Base Card

Matching Envelope

Matching Gift Tag

**3D TRIANGULAR BASE KIT**

Unregistered Design Rights owned by Sue Douglas  
6 page kit Includes: Triangular Base Card; Matching Envelope; Matching Gift Tag and a choice of Sentiments

Folds Flat for Posting

A COLLECTION OF BEAUTIFUL FRAMED FLORAL LANDSCAPES

Exclusive Design Purchased from [www.CraftsUPrint.com/sue-douglas/](http://www.CraftsUPrint.com/sue-douglas/)

## Lilac Pansies & Butterflies

Triangular Base Card

Matching Envelope

Matching Gift Tag

**3D TRIANGULAR BASE KIT**

Unregistered Design Rights owned by Sue Douglas  
6 page kit Includes: Triangular Base Card; Matching Envelope; Matching Gift Tag and a choice of Sentiments

Folds Flat for Posting

A COLLECTION OF BEAUTIFUL FRAMED FLORAL LANDSCAPES

Exclusive Design Purchased from [www.CraftsUPrint.com/sue-douglas/](http://www.CraftsUPrint.com/sue-douglas/)

### Triangular Base Card Kit Collection

## Colourful Petunias

Triangular Base Card

Matching Envelope

Matching Gift Tag

**3D TRIANGULAR BASE KIT**

Unregistered Design Rights owned by Sue Douglas  
6 page kit Includes: Triangular Base Card; Matching Envelope; Matching Gift Tag and a choice of Sentiments

Folds Flat for Posting

A COLLECTION OF BEAUTIFUL FRAMED FLORAL LANDSCAPES

Exclusive Design Purchased from [www.CraftsUPrint.com/sue-douglas/](http://www.CraftsUPrint.com/sue-douglas/)

## Peach Roses, Lilac Flowers & Butterflies

Triangular Base Card

Matching Envelope

Matching Gift Tag

**3D TRIANGULAR BASE KIT**

Unregistered Design Rights owned by Sue Douglas  
6 page kit Includes: Triangular Base Card; Matching Envelope; Matching Gift Tag and a choice of Sentiments

Folds Flat for Posting

A COLLECTION OF BEAUTIFUL FRAMED FLORAL LANDSCAPES

Exclusive Design Purchased from [www.CraftsUPrint.com/sue-douglas/](http://www.CraftsUPrint.com/sue-douglas/)

### Triangular Base Card Kit Collection



*Red Roses*

*With Love*

TRIANGULAR BASE CARD

MATCHING ENVELOPE

MATCHING GIFT TAG

**3D TRIANGULAR BASE KIT**

Unregistered Design Rights owned by Sue Douglas  
6 page kit Includes: Triangular Base Card; Matching Envelope; Matching Gift Tag and a choice of Sentiments

Folds Flat for Posting

A COLLECTION OF BEAUTIFUL FRAMED FLORAL LANDSCAPES

Exclusive Design Purchased from [www.CraftsUPrint.com/sue-douglas/](http://www.CraftsUPrint.com/sue-douglas/)

*Roses & Butterflies*

TRIANGULAR BASE CARD

MATCHING ENVELOPE

MATCHING GIFT TAG

**3D TRIANGULAR BASE KIT**

Unregistered Design Rights owned by Sue Douglas  
6 page kit Includes: Triangular Base Card; Matching Envelope; Matching Gift Tag and a choice of Sentiments

Folds Flat for Posting

A COLLECTION OF BEAUTIFUL FRAMED FLORAL LANDSCAPES

Exclusive Design Purchased from [www.CraftsUPrint.com/sue-douglas/](http://www.CraftsUPrint.com/sue-douglas/)

[Triangular Base Card Kit Collection](#)

*White & Yellow Lilies*

*On Your Special Day*

TRIANGULAR BASE CARD

MATCHING ENVELOPE

MATCHING GIFT TAG

**3D TRIANGULAR BASE KIT**

Unregistered Design Rights owned by Sue Douglas  
6 page kit Includes: Triangular Base Card; Matching Envelope; Matching Gift Tag and a choice of Sentiments

Folds Flat for Posting

A COLLECTION OF BEAUTIFUL FRAMED FLORAL LANDSCAPES

Exclusive Design Purchased from [www.CraftsUPrint.com/sue-douglas/](http://www.CraftsUPrint.com/sue-douglas/)

*Yellow Old English Roses*

*With Love*

TRIANGULAR BASE CARD

MATCHING ENVELOPE

MATCHING GIFT TAG

**3D TRIANGULAR BASE KIT**

Unregistered Design Rights owned by Sue Douglas  
6 page kit Includes: Triangular Base Card; Matching Envelope; Matching Gift Tag and a choice of Sentiments

Folds Flat for Posting

A COLLECTION OF BEAUTIFUL FRAMED FLORAL LANDSCAPES

Exclusive Design Purchased from [www.CraftsUPrint.com/sue-douglas/](http://www.CraftsUPrint.com/sue-douglas/)

[Triangular Base Card Kit Collection](#)





## [Triangular Base Card Kit Collection](#)

Please click on the links below, in order to see designs in my other collections, available to purchase at CraftsUprint

Please click on the links below the photos to see all the designs in that particular collection

## 3d Room with a View Kit Down at the Local Pub

Unregistered Design Rights  
owned by Sue Douglas

Back Text Plate and a  
Range of Sentiments are Included

Pull the Slider Sides Apart to Reveal a  
**Free Standing 3d Room!**  
that Folds Flat  
for Posting

Flattened View  
Fits an 8in x 8in  
Envelope

Exclusive Design Purchased from [www.CraftsUPrint.com/sue-douglas/](http://www.CraftsUPrint.com/sue-douglas/)

## 3d Room with a View Kit Christmas Down at the Local Pub

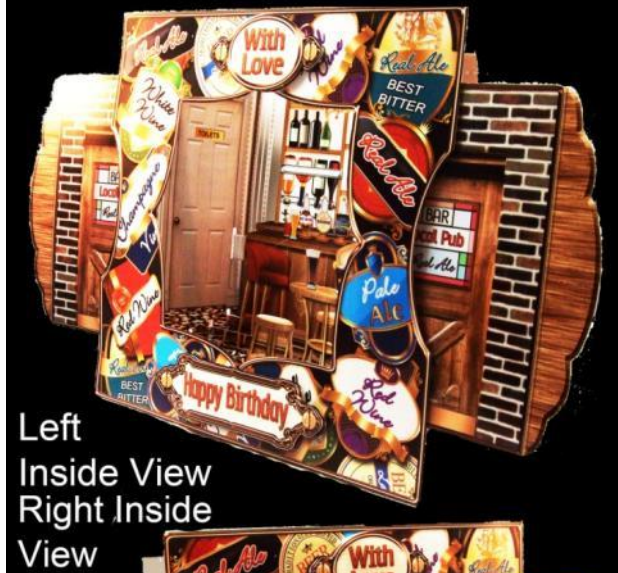
Unregistered Design Rights  
owned by Sue Douglas

Back Text Plate and a  
Range of Sentiments are Included

Pull the Slider Sides Apart to Reveal a  
**Free Standing 3d Room!**  
that Folds Flat  
for Posting

Flattened View  
Fits an 8in x 8in  
Envelope

Exclusive Design Purchased from [www.CraftsUPrint.com/sue-douglas/](http://www.CraftsUPrint.com/sue-douglas/)



[3d Room with a View Kits](#)



**3d Room with a View Kit**  
**Church Wedding**

Unregistered Design Rights  
 owned by Sue Douglas

Back Text Plate & a  
 Range of Sentiments are Included

Pull the Slider Sides Apart to Reveal a  
**Free Standing 3d Room!**  
 that Folds Flat  
 for Posting

Flattened View  
 Fits an 8in x 8in  
 Envelope

Exclusive Design Purchased from [www.CraftsUPrint.com/sue-douglas/](http://www.CraftsUPrint.com/sue-douglas/)

**3d Room with a View Kit**  
**Secret Garden**

Unregistered Design Rights  
 owned by Sue Douglas

Back Text Plate & a  
 Range of Sentiments are Included

Pull the Slider Sides Apart to Reveal a  
**Free Standing 3d Room!**  
 that Folds Flat  
 for Posting

Flattened View  
 Fits an 8in x 8in  
 Envelope

Exclusive Design Purchased from [www.CraftsUPrint.com/sue-douglas/](http://www.CraftsUPrint.com/sue-douglas/)

**Left  
 Inside View**

**Right Inside  
 View**

**Left  
 Inside View**

**Right Inside  
 View**

**[3d Room with a View Kits](#)**



## 3d Room with a View Kit Gone for a Cuppa Garden Shed

Unregistered Design Rights  
owned by Sue Douglas

Back Text Plate & a  
Range of Sentiments are Included

Pull the Slider Sides Apart to Reveal a  
**Free Standing 3d Room!**  
that Folds Flat  
for Posting



Flattened View  
Fits an 8in x 8in  
Envelope



Exclusive Design Purchased from [www.CraftsUPrint.com/sue-douglas/](http://www.CraftsUPrint.com/sue-douglas/)

## 3d Room with a View Kit Pamper Yourself

Unregistered Design Rights  
owned by Sue Douglas

Back Text Plate & a  
Range of Sentiments are Included

Pull the Slider Sides Apart to Reveal a  
**Free Standing 3d Room!**  
that Folds Flat  
for Posting



Flattened View  
Fits an 8in x 8in  
Envelope




Exclusive Design Purchased from [www.CraftsUPrint.com/sue-douglas/](http://www.CraftsUPrint.com/sue-douglas/)




Left  
Inside View




Right Inside  
View

Left  
Inside View



Right Inside  
View



[3d Room with a View Kits](#)



## 3d Room with a View Kit Let's Rock!

Unregistered Design Rights  
owned by Sue Douglas

Back Text Plate & a  
Range of Sentiments are Included

Pull the Slider Sides Apart to Reveal a  
**Free Standing 3d Room!**  
that Folds Flat  
for Posting

Flattened View  
Fits an 8in x 8in  
Envelope

Exclusive Design Purchased from [www.CraftsUPrint.com/sue-douglas/](http://www.CraftsUPrint.com/sue-douglas/)

## 3d Room with a View Kit My Craft Room

Unregistered Design Rights  
owned by Sue Douglas

Back Text Plate & a  
Range of Sentiments are Included

Pull the Slider Sides Apart to Reveal a  
**Free Standing 3d Room!**  
that Folds Flat  
for Posting

Flattened View  
Fits an 8in x 8in  
Envelope

Exclusive Design Purchased from [www.CraftsUPrint.com/sue-douglas/](http://www.CraftsUPrint.com/sue-douglas/)

Left  
Inside View  
Right Inside  
View

Left  
Inside View  
Right Inside  
View

[3d Room with a View Kits](#)



**3d Room with a View Kit**  
Sweet Dreams New Baby Girl

← →

Unregistered Design Rights  
owned by Sue Douglas

Back Text Plate & a  
Range of Sentiments are Included

Pull the Slider Sides Apart to Reveal a  
**Free Standing 3d Room!**  
that Folds Flat  
for Posting

Flattened View  
Fits an 8in x 8in  
Envelope

Exclusive Design Purchased from [www.CraftsUPrint.com/sue-douglas/](http://www.CraftsUPrint.com/sue-douglas/)

**3d Room with a View Kit**  
Sweet Dreams New Baby Boy

← →

Unregistered Design Rights  
owned by Sue Douglas

Back Text Plate & a  
Range of Sentiments are Included

Pull the Slider Sides Apart to Reveal a  
**Free Standing 3d Room!**  
that Folds Flat  
for Posting

Flattened View  
Fits an 8in x 8in  
Envelope

Exclusive Design Purchased from [www.CraftsUPrint.com/sue-douglas/](http://www.CraftsUPrint.com/sue-douglas/)

Left  
Side View  
Right Side  
View

Left  
Inside View  
Right Inside  
View

[3d Room with a View Kits](#)



## 3d Room with a View Kit Vintage Music Room

Unregistered Design Rights  
owned by Sue Douglas

Back Text Plate & a  
Range of Sentiments are Included

**Pull the Slider Sides Apart to Reveal a  
Free Standing 3d Room!**  
that Folds Flat  
for Posting

Flattened View  
Fits an 8in x 8in  
Envelope

*On Your Special Day*

Exclusive Design Purchased from [www.CraftsUPrint.com/sue-douglas/](http://www.CraftsUPrint.com/sue-douglas/)

## 3d Room with a View Kit The Boudoir

Unregistered Design Rights  
owned by Sue Douglas

Back Text Plate & a  
Range of Sentiments are Included

**Pull the Slider Sides Apart to Reveal a  
Free Standing 3d Room!**  
that Folds Flat  
for Posting

Flattened View  
Fits an 8in x 8in  
Envelope

*Just For You*

Exclusive Design Purchased from [www.CraftsUPrint.com/sue-douglas/](http://www.CraftsUPrint.com/sue-douglas/)

Left  
Inside View  
Right Inside  
View

Left  
Inside View  
Right Inside  
View

[3d Room with a View Kits](#)



### 3d Room with a View Kit Vintage Christmas

Unregistered Design Rights  
owned by Sue Douglas

Back Text Plate & a  
Range of Sentiments are Included

Pull the Slider Sides Apart to Reveal a  
**Free Standing 3d Room!**  
that Folds Flat  
for Posting

Flattened View  
Fits an 8in x 8in  
Envelope

Exclusive Design Purchased from [www.CraftsUPrint.com/sue-douglas/](http://www.CraftsUPrint.com/sue-douglas/)

### 3d Room with a View Kit Christmas at Home

Unregistered Design Rights  
owned by Sue Douglas

Back Text Plate & a  
Range of Sentiments are Included

Pull the Slider Sides Apart to Reveal a  
**Free Standing 3d Room!**  
that Folds Flat  
for Posting

Flattened View  
Fits an 8in x 8in  
Envelope

Exclusive Design Purchased from [www.CraftsUPrint.com/sue-douglas/](http://www.CraftsUPrint.com/sue-douglas/)

Left  
Inside View  
Right Inside  
View

Left  
Inside View  
Right Inside  
View

[3d Room with a View Kits](#)





[Gift Card / Money Envelopes Mini Kits](#)



[Gift Card / Money Envelopes Mini Kits](#)





[Gift Card / Money Envelopes Mini Kits](#)



[Gift Card / Money Envelopes Mini Kits](#)



# Morning Glory

Unregistered Design Rights  
owned by Sue Douglas

Exclusive Design Purchased from  
[www.CraftsUPrint.com/sue-douglas/](http://www.CraftsUPrint.com/sue-douglas/)

There are 6 pages in the kit and the following items  
are included:

Hexagonal Cup and Saucer Pop-up, Tray Mat,  
Tea Bag, Teaspoon, Card Front with Decoupage;  
Card Back with Text Plate for your own greetings;  
A range of Sentiments for the Card Front and the  
Tea Bag

Folds flat for posting!



Time for Tea Pop-up Kit

# Pansies with Polka Dots

Unregistered Design Rights  
owned by Sue Douglas

Exclusive Design Purchased from  
[www.CraftsUPrint.com/sue-douglas/](http://www.CraftsUPrint.com/sue-douglas/)

There are 6 pages in the kit and the following items  
are included:

Hexagonal Cup and Saucer Pop-up, Tray Mat,  
Tea Bag, Teaspoon, Card Front with Decoupage;  
Card Back with Text Plate for your own greetings;  
A range of Sentiments for the Card Front and the  
Tea Bag

Folds flat for posting!



Time for Tea Pop-up Kit

## [Time for Tea Pop-Up Kits](#)

# Roses & Butterflies

Unregistered Design Rights  
owned by Sue Douglas

Exclusive Design Purchased from  
[www.CraftsUPrint.com/sue-douglas/](http://www.CraftsUPrint.com/sue-douglas/)

There are 6 pages in the kit and the following items  
are included:

Hexagonal Cup and Saucer Pop-up, Tray Mat,  
Tea Bag, Teaspoon, Card Front with Decoupage;  
Card Back with Text Plate for your own greetings;  
A range of Sentiments for the Card Front and the  
Tea Bag

Folds flat for posting!



Time for Tea Pop-up Kit

# Spring Tulips & Butterflies

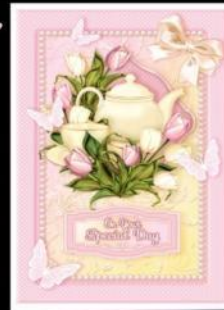
Unregistered Design Rights  
owned by Sue Douglas

Exclusive Design Purchased from  
[www.CraftsUPrint.com/sue-douglas/](http://www.CraftsUPrint.com/sue-douglas/)

There are 6 pages in the kit and the following items  
are included:

Hexagonal Cup and Saucer Pop-up, Tray Mat,  
Tea Bag, Teaspoon, Card Front with Decoupage;  
Card Back with Text Plate for your own greetings;  
A range of Sentiments for the Card Front and the  
Tea Bag

Folds flat for posting!



Time for Tea Pop-up Kit

## [Time for Tea Pop-Up Kits](#)

**Pink Peonies & Butterflies**  
 Unregistered Design Rights owned by Sue Douglas  
 Exclusive Design Purchased from [www.CraftsUPrint.com/sue-douglas/](http://www.CraftsUPrint.com/sue-douglas/)

There are 6 pages in the kit and the following items are included:  
 Hexagonal Cup and Saucer Pop-up, Tray Mat, Tea Bag, Teaspoon, Card Front with Decoupage, Card Back with Text Plate for your own greetings, A range of Sentiments for the Card Front and the Tea Bag  
**Folds flat for posting!**

**Time for Tea Pop-up Kit**

**Lilac Magnolias & Butterflies**  
 Unregistered Design Rights owned by Sue Douglas  
 Exclusive Design Purchased from [www.CraftsUPrint.com/sue-douglas/](http://www.CraftsUPrint.com/sue-douglas/)

There are 6 pages in the kit and the following items are included:  
 Hexagonal Cup and Saucer Pop-up, Tray Mat, Tea Bag, Teaspoon, Card Front with Decoupage, Card Back with Text Plate for your own greetings, A range of Sentiments for the Card Front and the Tea Bag  
**Folds flat for posting!**

**Time for Tea Pop-up Kit**

[Time for Tea Pop-Up Kits](#)

**Table Setting Mini Kit collection.**

**Table Setting Mini Kit**  
 Christmas Cracker with Gift Tag, Napkin Ring & Place Card  
**Candles**  
 Cracker can also be used as a Gift Box

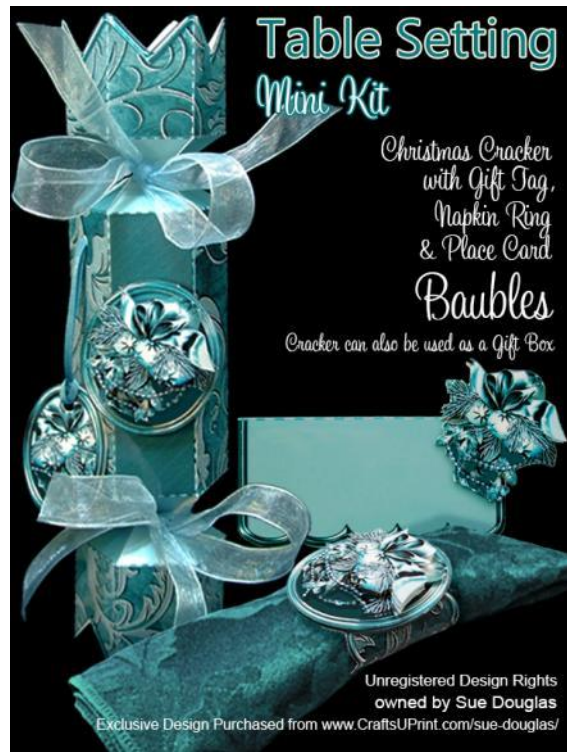
Unregistered Design Rights owned by Sue Douglas  
 Exclusive Design Purchased from [www.CraftsUPrint.com/sue-douglas/](http://www.CraftsUPrint.com/sue-douglas/)

**Table Setting Mini Kit**  
 Christmas Cracker with Gift Tag, Napkin Ring & Place Card  
**Gold Bells & Holly**  
 Cracker can also be used as a Gift Box

Unregistered Design Rights owned by Sue Douglas  
 Exclusive Design Purchased from [www.CraftsUPrint.com/sue-douglas/](http://www.CraftsUPrint.com/sue-douglas/)

[Table Setting Mini Kits](#)





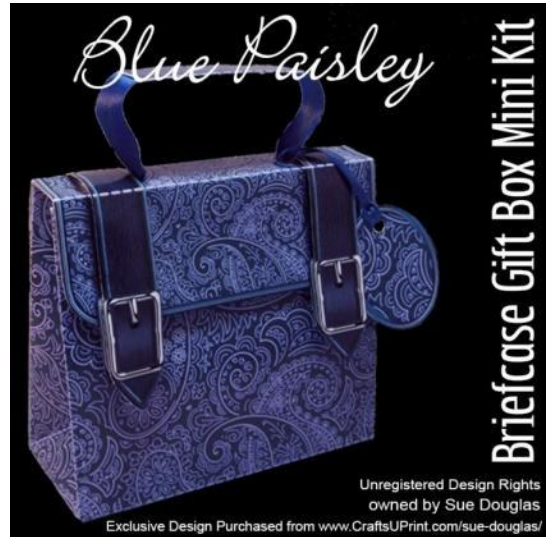
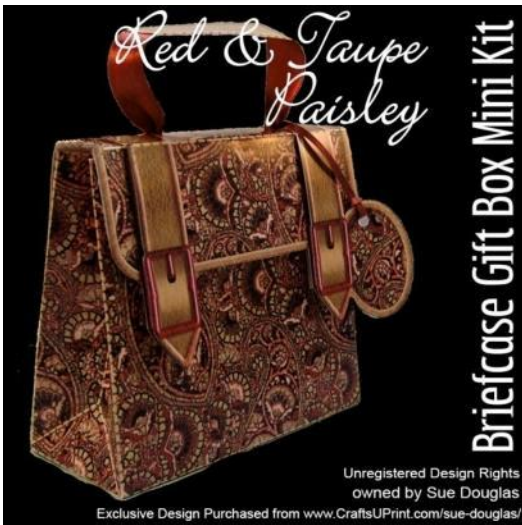
[Table Setting Mini Kits](#)



[Table Setting Mini Kits](#)

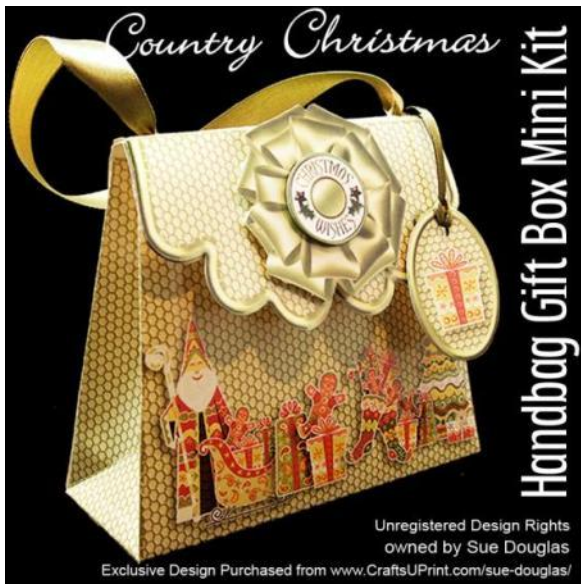


**Table Setting Mini Kits**



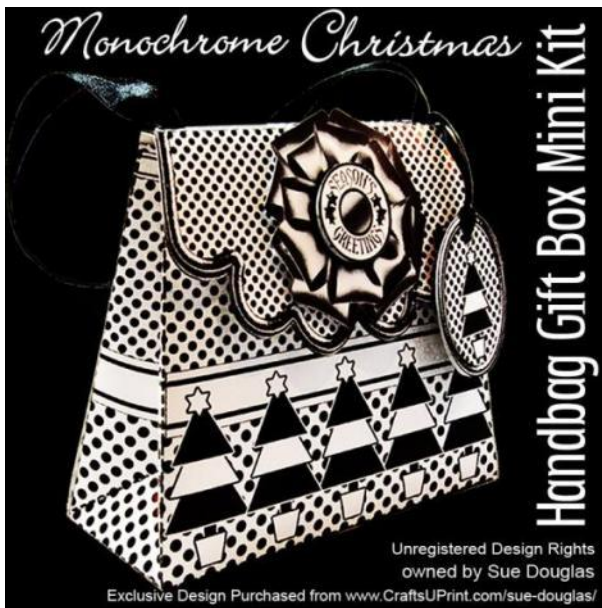
**Briefcase Gift Boxes**





## Handbag Gift Boxes

---



## Handbag Gift Boxes

---





### Handbag Gift Boxes



### Handbag Gift Boxes

**Floral Surprise Kit**  
Lilac & Pink Pansies

Top View

Unregistered Design Rights owned by Sue Douglas

Also an Envelope, Back Text Plate a range of Sentiment Panels are included

An original 3d Design that Folds Flat for Posting

Matching Envelope

Just For You

Exclusive Design Purchased from [www.CraftsUPrint.com/sue-douglas/](http://www.CraftsUPrint.com/sue-douglas/)

**Floral Surprise Kit**  
Pink & Peach Roses

Top View

Unregistered Design Rights owned by Sue Douglas

Also an Envelope, Back Text Plate a range of Sentiment Panels are included

An original 3d Design that Folds Flat for Posting

Matching Envelope

Just For You

Exclusive Design Purchased from [www.CraftsUPrint.com/sue-douglas/](http://www.CraftsUPrint.com/sue-douglas/)

[Floral Surprise Card Kits](#)

**Floral Surprise Kit**  
Golden Poinsettias

Top View

Unregistered Design Rights owned by Sue Douglas

Also an Envelope, Back Text Plate a range of Sentiment Panels are included

An original 3d Design that Folds Flat for Posting

Matching Envelope

Merry Christmas

Exclusive Design Purchased from [www.CraftsUPrint.com/sue-douglas/](http://www.CraftsUPrint.com/sue-douglas/)

**Floral Surprise Kit**  
Pink Roses & Butterflies

Top View

Unregistered Design Rights owned by Sue Douglas

Also an Envelope, Back Text Plate a range of Sentiment Panels are included

An original 3d Design that Folds Flat for Posting

Matching Envelope

Happy Birthday

Exclusive Design Purchased from [www.CraftsUPrint.com/sue-douglas/](http://www.CraftsUPrint.com/sue-douglas/)

[Floral Surprise Card Kits](#)





### Plate Card Kits



### Plate Card Kits



**[Acetate Window Card Kits](#)**





[Stationery Gift Sets](#)





[8in x 8in Easel Card Kits](#)



[Gift Card Money Envelope Kits](#)



[Gift Card Money Envelope Kits](#)

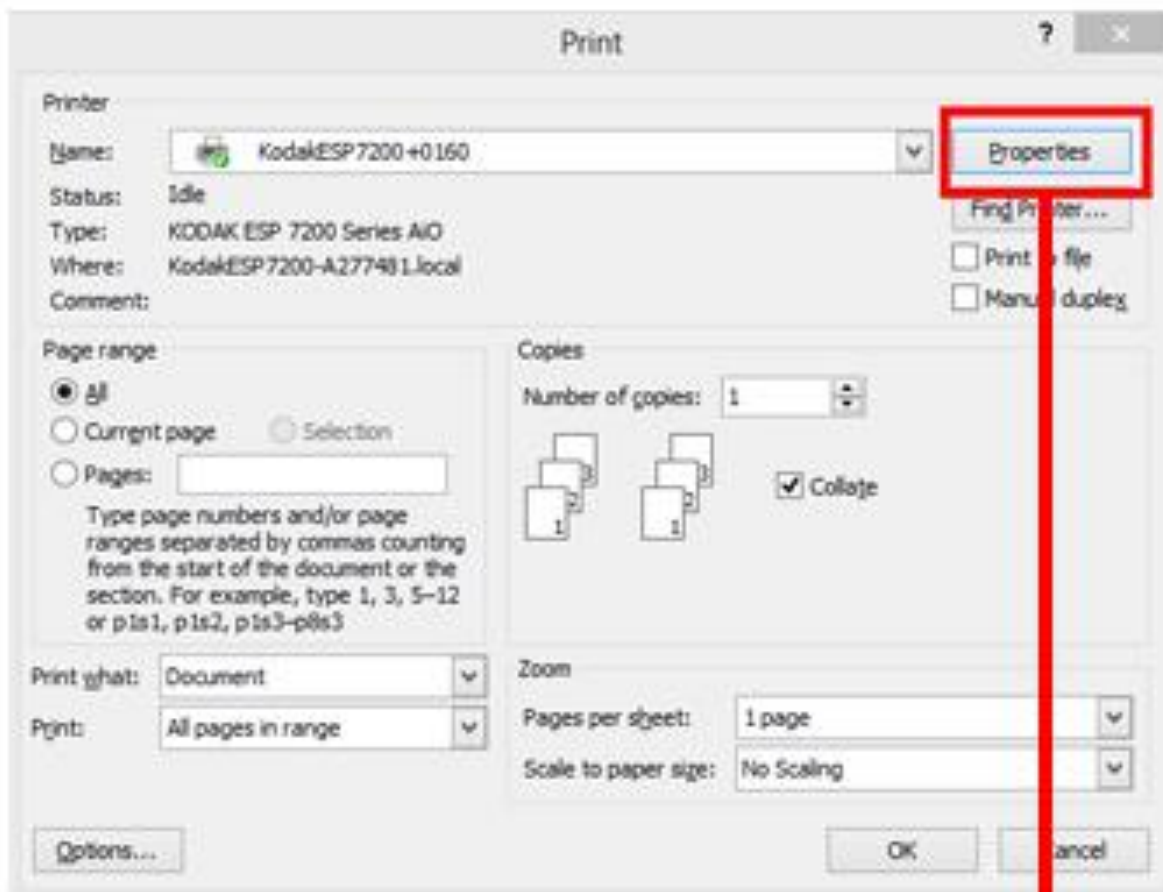


## ***Printer Settings for CUP sheets***

***Please note that the measurements / Card Blank sizes in this tutorial are correct sizes, providing you print the sheets with your printer settings set to 'Actual Size', rather than 'Fit to Media', which some of my customers seem to be doing. The effect of printing CUP sheets with the 'Fit to Media' setting, will cause the sheets to print out larger than the design size actually is, and larger than the designer intended, and you will most likely (certainly with my designs!), have to cut into the Card Front design to get it to fit! So if that's happening to you, please see details below of how to correct this problem, which is simple to fix, so that when I say in my instructions that the design tutorials that the design will fit a specific Card Blank size, it will fit, and you won't have to cut into the card front design to make it fit, because your settings have printed it out too big! The fault is with a setting you are using on your printer at the time when you send a sheet to your printer to print. Here are the settings that I use on my printer, when sending CUP sheets to my printer. The screen shots below may be different on your printer, in respect of the layout and the terms that are used, and the software that you use to print, but I don't think you should have any problems seeing what the equivalent terms being used on your own printer are.***

***You don't need to do anything on the actual printer, provided when you print your CUP sheets you go through the Printer dialogue box (Press CTRL & P together, on your keyboard to bring up the Print Box)***

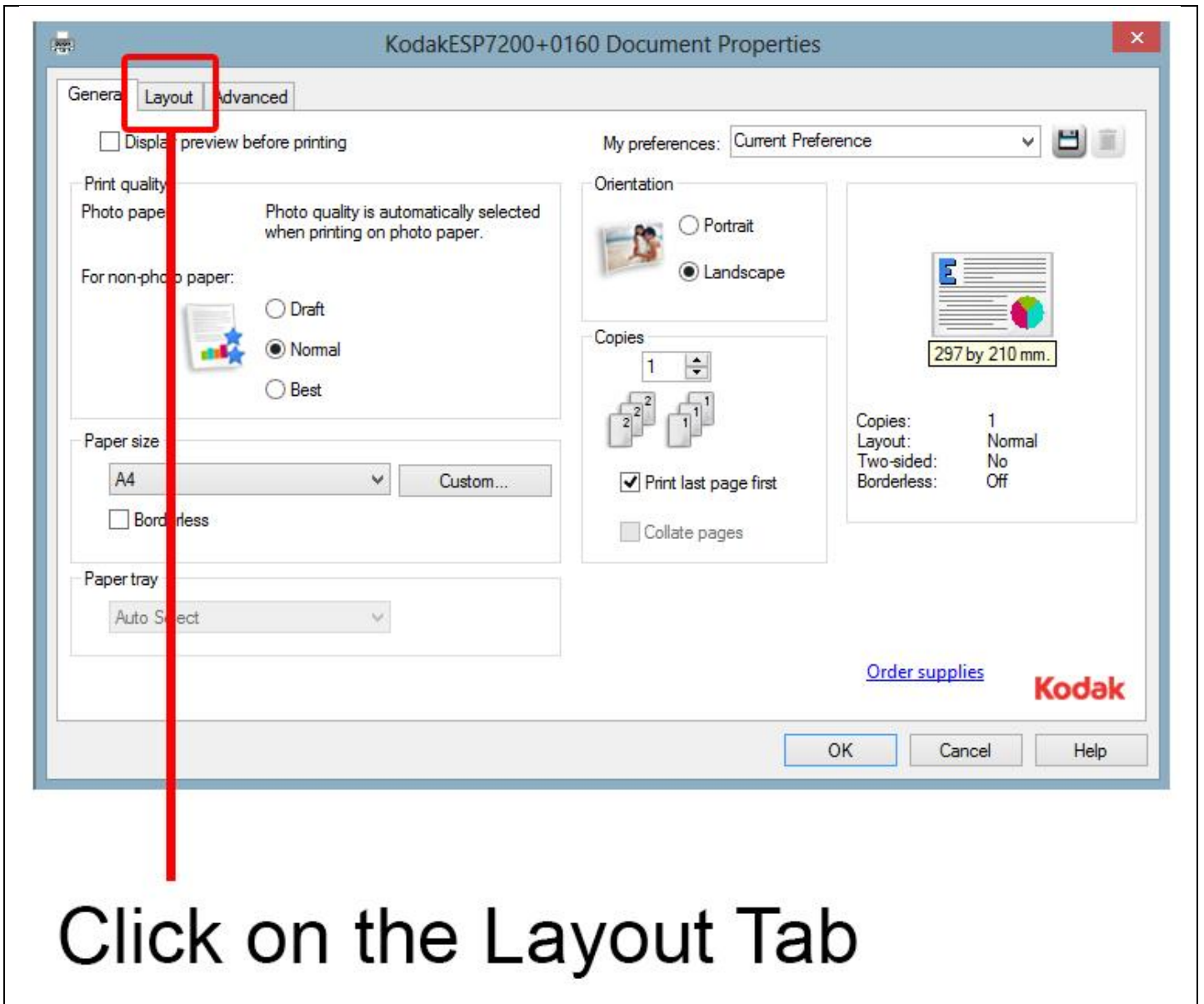
***Continued on next page***



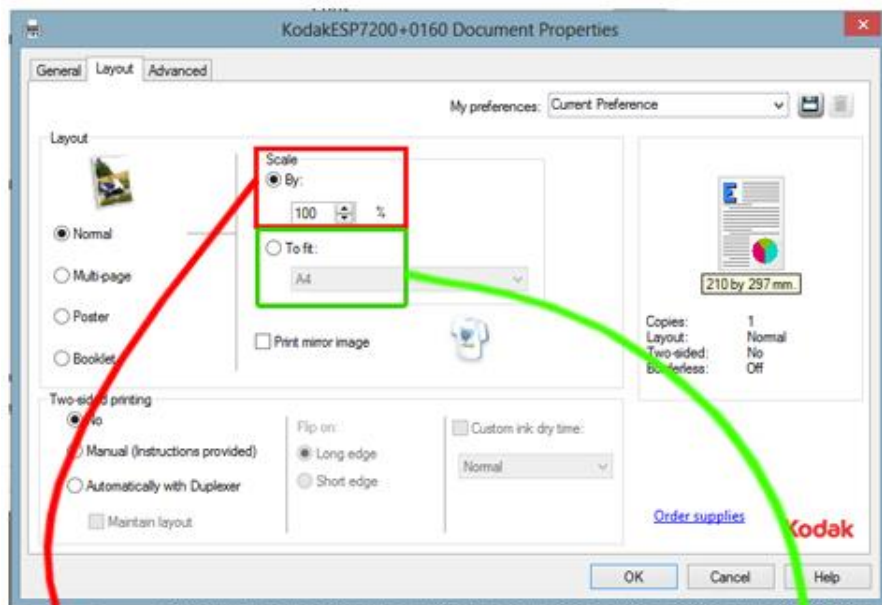
Click on the Property Button

*Continued on next page*





Click on the Layout Tab



This 'Scale' option is checked/ticked which shows that I print any CUP sheets at their 'Actual Size' i.e.100%

You will see that this 'To Fit A4' option, (i.e. the equivalent to 'Fit to Media' ) is not checked / ticked on my settings above. If it was, then because a CUP sheet has a printable area, which is less than A4, the effect of checking / ticking this option will increase the printable area to A4 and the sheet will be printed in a size larger than the designer intended.

***This 'Scale' option is checked/ticked, which shows that I print any CUP sheets at their 'Actual Size' i.e.100%***

***You will see that this 'To Fit A4' option, (i.e. 'Fit to Media') You will see that this 'To Fit A4' option, (i.e. the equivalent to 'Fit***

***To Media') is not checked / ticked on my settings above. If it was, then because a CUP sheet has a printable area, which is less than A4, the effect of checking / ticking this option will increase the printable area to A4 and the sheet will be printed In a size larger than the designer intended. If it is on yours, (N.B the term used on your printer may be called something different, but it will have the meaning of 'Fit to Media' (i.e. Fit to A4 (or Letter size in the US)), then you may find that you have to cut into the printed design on my card fronts (and other designers card fronts), in order for them to fit on the card blanks that I, and other designers, indicate the size the sheets are designed for. In actual fact, when you print my designs at the correct setting of Actual size, there will ALWAYS be a small margin around my card fronts when you apply them to the card blank size I have instructed, if there isn't, or you have to cut into my card front design to make it fit the card blank, then you are printing as 'Fit To Media' instead of printing to 'Actual Size' which is the correct setting for it to fit on the card blank size, I say it is for. The reason for this, is because on CUP sheets the printable area, we have to design with, is smaller than A4, so that every printer that each customer may have (including international paper***



*sizes), will easily be able to print the sheets without any clipping occurring. If the printable area at CUP was A4 then there would be problems if the customer had a printer that wasn't able to print borderless A4 prints, and also those international customers who print on paper sizes that are different sizes to A4 (such as Letter Size which is the paper size that is used in the US)*

*Once you change this setting to 'Actual Size', or the equivalent term used on your printer. I have a Kodak printer, and my printer setting to print to actual size is called 'Scale' and the percentage I have set against it is 100%. I hope that helps...*