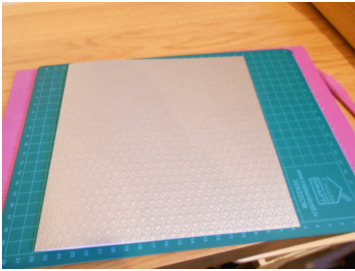


## How to Make an Interlocking Topper Card



1. Please read these instructions through before beginning your project. You will need an 8"x8" blank card to use as your base. (I made one using two sheets of embossed silver card - instructions on how to do this are at the end of the tutorial).

2. Print out all pieces of the kit. Print the small topper internal backing papers onto paper and all other sheets onto card. 160gsm card will be fine.

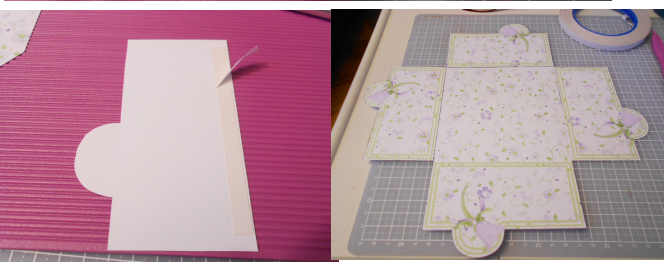
3. Cut out all pieces.



4. Stick the main topper onto the front of your card.

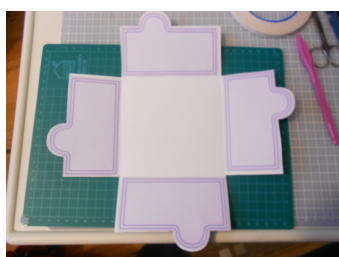


5. Take the small topper base and score along the sides of the central square. It is easy to do this if you use one of the small topper sides to help you line up where you need to score. (I have drawn dotted lines onto my diagram to show you where to fold).



6. Stick the sides of the small topper base onto the flaps you have just made. Do this with the coloured side facing up and the white side facing your work surface. Don't put your tape or glue right up to the edges of the sides

because the side flaps are angled and you don't want to accidentally stick your sides to the topper when you close it.

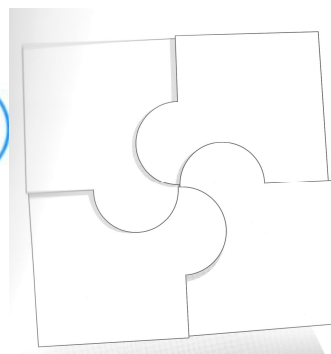
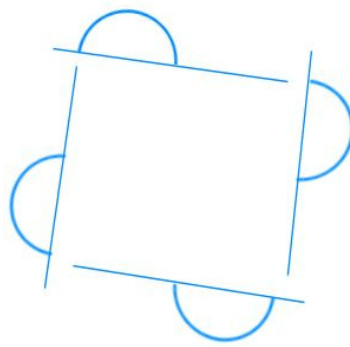
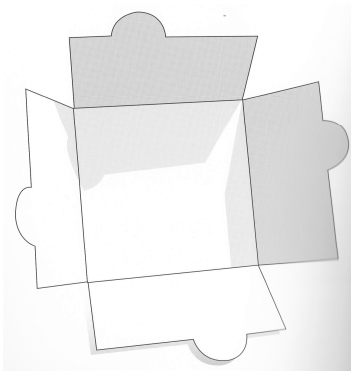


7. Flip your work over so that the patterned side is face down and you are looking at the white side. Then using a glue stick, adhere your backing papers onto the flaps. This will cover the joints.

8. Stick the small topper into the central white square.



9. Open up your card and stick in the insert. If you have made your own card using 2 sheets of A4 paper then you will need to cover the join. I did this using a contrasting paper, punching a design down the edge and sticking this over the join using a glue stick.



10. Fold down the flaps on your small topper to create the score lines. Now you need to fold the flaps so that they interlock - if you do

this in the way I describe then you won't need to bend the last flap when you're tucking it in, which would spoil your card. Stand up all the flaps so that they look like the sides of a box. The rounded bits which stick up on the top edge we will call the left side of the flap. What you need to do is start to push all the flaps together towards the centre of the topper - at the same time you need to tuck in the right top corner of each flap - see the diagram. Gently push all sides to the middle so that they

slowly interlock and the rounded bits all meet in the centre. See the diagrams.



11. Carefully peek inside your topper to see which way up the image is and put a little mark with a pen or pencil on the back of the topper to show the bottom of the image. Then stick the topper onto the centre of the front of the card,

double checking that your mark is at the bottom of the topper before sticking it down.







12. To make the gift tag, cut out the hole in the top and thread ribbon or cord through the hole. You can then either use it to decorate the front of your card as I did, or use it as a gift tag on a gift!

To make an 8"x8" card you need 2 sheets of A4 card. Fold and score about half an inch in on the short side of one sheet. With patterned side face down and the little fold face up, put double sided tape or glue along the folded edge. Carefully line up your other sheet of card (patterned side face up) and stick together. Then using a guillotine or trimmer, measure and cut the card to be 8 inches square.

If you look on the [www.craftsuprint.com](http://www.craftsuprint.com) website at the CUP TV episodes Carol Clarke has demonstrated this beautifully in Episode no. 3. You will also find this on YouTube at the following link -

<http://www.youtube.com/watch?v=RoF2zS-zYXM>